



Saigashokuninburui

Contents

A Message from the Director: Dr. WATANABE Yasuaki	3
Overview	4
Collaborative Research	6
Model Building in Humanities through Data-driven Problem-solving (Planned)	8
The Center for Data-Driven Research on Premodern Japanese Texts	10
Project to Build an International Collaborative Research Network for Pre-Modern Japanese Texts	11
Publicly Available Databases	15
Overview of Activities	16
Researchers	24
Support for Young Researchers	26
Graduate Education	27
Reference Data	28
National Institutes for Humanities	30

A Message from the Director : Dr. WATANABE Yasuaki

Welcome to the National Institute of Japanese Literature (NIJL).

The institute was founded in 1972, making this the 51st year since its establishment. This means that after the passage of over half a century, we are entering another new year of contributions to research in Japanese literature and other related fields. After a preparatory period, the NIJL began its library services in July 1977. Reflecting upon my own memories, only a year earlier, I had enrolled in my university's Department of Japanese Literature and made my first visit to the institute, then located in Togoshi (Shinagawa-ku, Tokyo), on the advice of a senior. I remember my surprise at how easy it was to peruse—and even request copies of—texts and documents that I had only been able to access with great difficulty in the past. In the 40-odd years since, the range of materials offered by NIJL has dramatically expanded and the quality of its services has remarkably improved. In particular, the extensiveness of the institute's databases is nothing short of astounding.

Currently, the COVID-19 pandemic is threatening our very lives; it has placed significant constraints on our ability to research and access documents. Thus, it seems to me that the importance of such databases is a fact that is universally recognized now.

The Database of Premodern Japanese Works has been a centerpiece among these databases. It was developed from the "Project to Build an International Collaborative Research Network for Premodern Japanese Texts" (NIJL-NW Project), which the institute has taken a leading role in promoting since 2014. In March of this year, the Database was reborn as the Union Catalogue Database of Japanese Texts. The aim of this historical text network project, which is now within reach of being realized, is to produce image data for over 300,000 unique items, through collaboration with research facilities both in Japan and abroad. Building on this achievement, a successor project, titled "Model Building in Humanities through Data-driven Problem-solving," has been approved within the framework of the Ministry of Education's 2020 Roadmap. This has led to the founding of the institute's Center for Data-Driven Research on Premodern Japanese Texts last year. Going forward, we intend to chart a path how to effectively utilize these massive quantities of accumulated data. With such a goal in mind, we are pursuing a number of projects—on an international scale—in collaboration with various different fields, including the natural sciences. Such promotion of collaborative research, through the creation of a network of researchers spanning national divisions, is one of our institute's chief tasks.

No matter the type of information, it is ultimately us humans who use it, and also us humans who digest it, and make of it nourishment for our own intellect. As such, it holds no meaning to have treasures that are left unused.

At present, many people are seriously asking what the humanities are good for. This is precisely why I believe our words and actions are necessary. For it is the classics that teach us how to keep our heads above water in a sea of information, the classics that show us the way forward when confronted with multiple different perspectives. Discovering previously unknown texts and documents from the past; bringing them back to life in the present by providing them in a manner that makes them accessible; demonstrating their value in a way that one and all can share—such is the mission entrusted to all those involved with premodern texts, and one in which it is our hope that our own institution will take the lead.



© えくてびあん

Overview

The Goals of NIJL

This institute strives to serve researchers in various fields, including Japanese literature by collecting a massive archive of materials related to Japanese literature from various regions within Japan. NIJL is a comprehensive research institute and functions as a foundation for the broader promotion of advanced collaborative research into Japanese literature. With a history of 50 years since its establishment, we have accumulated a wealth of research on premodern Japanese texts. Our mission is to utilize premodern Japanese texts as a rich intellectual resource through collaborates with domestic and international research institutions and scholars, and to create interdisciplinary research.

A Brief Chronology of NIJL

1966 December	The Science Council of Japan advises the Japanese government to establish a “Center for Research on Japanese Language and Literature” (provisional title).
1970 September	The Council for Science and Technology reports to the Minister of Education on its emergency establishment of a “Center for Research on Japanese Literature” (provisional title).
1971 April	Funding is allocated to the Ministry of Science, Education and Culture for investigations regarding the provision of a facility to house archival materials for Japanese literary study.
1972 May	The National Institute of Japanese Literature (official name) is established, consisting of a management division, a documents and materials division, and a research and information division.
1977 June	Inaugural ceremony is held.
1977 July	Library services commence.
1979 April	Library services division established.
1987 April	Online search services set up for the database of NIJL's Microfilm Materials catalog and Premodern Japanese Manuscripts catalog.
1992 April	Online search services made available for the catalog of research articles on Japanese Literature.
2002 November	Ceremony held in commemoration of NIJL's 30th anniversary.
2003 April	Department of Japanese Literature is established in the School of Cultural and Social Studies within the Graduate University for Advanced Studies as a foundational institution for research.
2004 April	Internal reorganization at NIJL after the incorporation of its parent institution, which is hereafter named the Institute for the Humanities of the Inter-University Research Institute Corporation.
2008 March	NIJL is moved to its current location in Midori-cho, Tachikawa city.
2013 April	The Center for a Premodern Japanese Texts Database is established.
2014 April	The Center for a Premodern Japanese Texts Database is renamed as the Center for Collaborative Research on Premodern Japanese Texts.
2019 February	Founding of the Tama Academic and Cultural Platform “Plat NIJL.”
2020 November	The Global Consortium for Japanese Textual Scholarship is established.
2022 April	The Center for Data-Driven Research on Premodern Japanese Texts is established.
2022 May	Ceremony held in commemoration of NIJL's 50th anniversary.

About the Facility

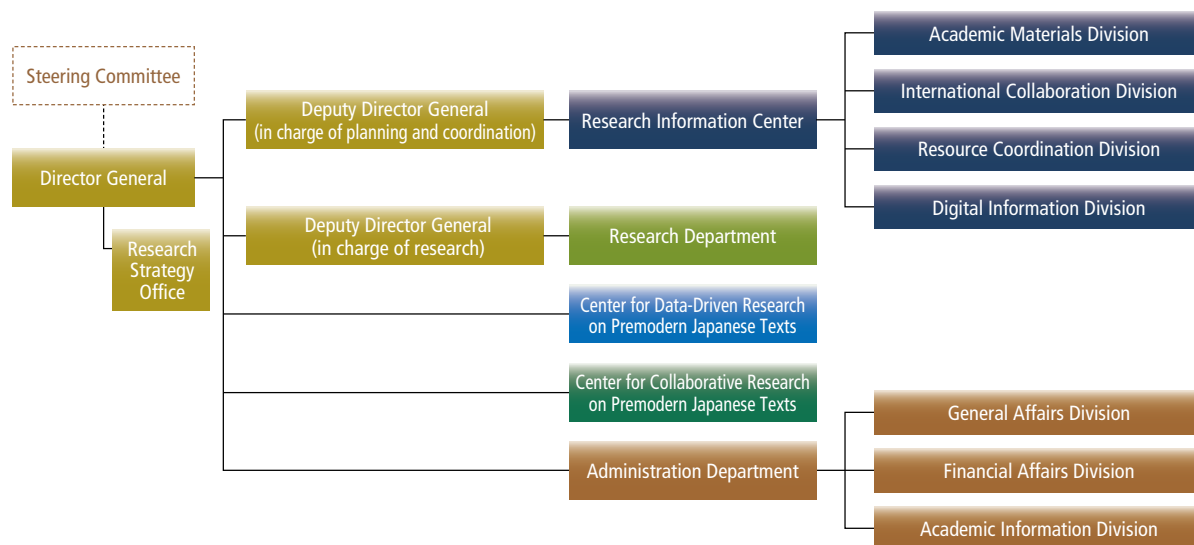
In August 1989 and again in June 1993, governmental meetings were held to discuss a proposal on relocating a number of national institutions to reduce the overcrowding and the overconcentration of national resources in the center of Tokyo's metropolitan area. It was in accordance with decisions reached during these meetings that NIJL was moved in March 2008, from Shinagawa Ward to Tachikawa city, outside the central metropolitan area.

The facility was designed to be fully accessible, with visitor convenience in mind.

The reading and exhibition rooms are open to visitors. The reading room provides open access to all reference books and a relaxed, spacious atmosphere for reading. The exhibition room holds regular exhibits of premodern texts from NIJL's collection.



Organization



Steering Committee

Non-NIJL Members

ANDO Hiroshi	Professor, Graduate School of Humanities and Sociology, The University of Tokyo
OSUMI Noriko	Vice President of Tohoku University and Director of Tohoku University Libraries
OTANI Setsuko	Professor, Graduate School of Literature, Seijo University
KAWAHIRA Toshifumi	Professor, Faculty of Humanities, Kyushu University
KUFUKIHARA Rei	President, Aichi Prefectural University
KURAKAZU Masae	Professor, College of Bioresource Sciences, Nihon University
SASAKI Takahiro	Professor, Keio Institute of Oriental Classics
TAKADA Hirohiko	Professor, College of Literature, Aoyama Gakuin University
TAKANO Toshihiko	Professor Emeritus, Gakushuin University
Zhang Longmei	Professor, Beijing Center for Japanese Studies, Beijing Foreign Studies University
YAMAJI Kazutsuna	Professor, Digital Content and Media Sciences Research Division, National Institute of Informatics
YAMAMOTO Satomi	Professor, Faculty of Letters, Arts and Sciences, Waseda University
Robert Huey	Professor Emeritus, University of Hawai'i at Mānoa

NIJL Members

IRIGUCHI Atsushi	Deputy Director General (Planning and Coordination)
UNNO Keisuke	Professor, Research Department (Director)
OYAMA Keizo	Specially appointed Professor
OCHIAI Hiroshi	Professor, Research Department
KANSAKU Ken'ichi	Deputy Director General (Research)
SAITO Maori	Professor, Research Department
NISHIMURA Shintaro	Professor, Research Department (Director)
FUJIZANE Kumiko	Professor, Research Department (Director)
YAMAMOTO Kazuaki	Professor, Research Department (Director)

Executive Staff

Director General	WATANABE Yasuaki
Deputy Director General (in charge of Planning and Coordination)	IRIGUCHI Atsushi
Deputy Director General (in charge of Research)	KANSAKU Ken'ichi

Research Department

Director	UNNO Keisuke
Director	KIGOSHI Shunsuke
Director	NISHIMURA Shintaro
Director	FUJIZANE Kumiko
Director	YAMAMOTO Kazuaki

Research Information Center

Director (dual post)	IRIGUCHI Atsushi
Manager of Academic Materials Division (dual post)	UNNO Keisuke
Manager of International Collaboration Division (dual post)	FUJIZANE Kumiko
Manager of Resource Coordination Division (dual post)	NISHIMURA Shintaro
Manager of Digital Information Division (dual post)	KIGOSHI Shunsuke

Graduate Institute for Advanced Studies, SOKENDAI

Chair of Japanese Literature	SAITO Maori
------------------------------	-------------

Center for Data-Driven Research on Premodern Japanese Texts

Director (dual post)	OYAMA Keizo
----------------------	-------------

Center for Collaborative Research on Premodern Japanese Texts

Director (dual post)	YAMAMOTO Kazuaki
General Manager (dual post)	KASAHARA Masahiro

Administration Department

Director	SHIMAZAKI Masahiro
Manager of General Affairs Division	KASAHARA Masahiro
Manager of Financial Affairs Division	HIMENO Miyuki
Manager of Academic Information Division	KATAOKA Shin

Collaborative Research

NIJL has accumulated massive quantities of materials (e.g. premodern texts, digital data, microfilms, and printed photographs) on Japanese literature and related fields while conducting over 50 years of surveying and collecting projects and through the Large-Scale Academic Frontiers Project ("Project to Build an International Collaborative Research Network for Pre-Modern Japanese Texts") which was deployed from FY2014 to FY2022 (see pp. 11-14). NIJL is engaged in the following collaborative research projects using these materials as main research resources to promote and develop diverse studies of Japanese literature further.

Collaborative research is indispensable to fulfill our mission as an inter-university research institute. Thus, we set up a collaborative research committee, involving 14 committee members (8 specialists from outside and 6 in-house faculty staff) to determine application guidelines, select projects, and manage progress of projects.

In the fourth mid-term (FY2022 -FY2027), we have established the total of seven collaborative research projects in three new research areas ("modern," "regional materials," and "international") in the special research projects section while systematically setting topics for basic research on our collections in the "project" area to expand and enrich our research activities. In addition, we will launch three new "data-driven collaborative research projects" in FY2023 to strongly promote the development of a research infrastructure for shifting humanities research to a data-driven approach.

In the course of developing any collaborative research project, regardless of whether selected through a public application process or an internal selection process, we carefully assess the ratio of young scholars and give consideration to fostering researchers of the next generation. Whenever a collaborative research project is led by a researcher from outside, we assign an in-house faculty member to ensure that the project proceeds smoothly.

Note: Public applications close in the fall of each year; decisions are announced at the end of the year.

Data-driven collaborative research

Data-driven collaborative research will be implemented as a pilot program to develop a research infrastructure for a paradigm shift in humanities research on massive quantities of digital data which NIJL has accumulated through the "Project to Build an International Collaborative Research Network for Pre-Modern Japanese Texts (FY2014-FY2022)." All projects are led by our faculty members and we select other project members.

- **Data-driven Analytical Research on the Expressive Matrix of *Waka* of the Hachidaishu Period** (2023-2025)
Main Researcher: WATANABE Yasuaki, Director, National Institute of Japanese Literature
- **Comprehensive Research on the Development of Data Analysis Technologies for Humanities** (2023-2027)
Main Researcher: OYAMA Keizo, Director, The Center for Data-Driven Research on Premodern Japanese Texts, National Institute of Japanese Literature
- **Experimental Research on the Enhancement of Non-destructive Document Analysis Technology** (2023-2025)
Main Researcher: SATO Imari, Professor, Digital Content and Media Sciences Research Division, National Institute of Informatics
UNNO Keisuke, Vice-Director, The Center for Data-Driven Research on Premodern Japanese Texts, National Institute of Japanese Literature

Core Research Projects

Core research projects are collaborative research that serves as fundamental research on Japanese literature and the related fields. All projects are to be led by our faculty members as a main researcher, and we select other project members.

- **Comprehensive Research on Regional Cultural Centers in the 19th Century: The case of the Hirose Family** (2019-2023)
Main Researcher: IRIGUCHI Atsushi (Professor at NIJL)
- **Fundamental Research on the emergence of the foundations of society permeated with archival awareness** (2022-2027)
Main Researcher: OTA Naohiro (Associate Professor at NIJL)
- **Basic Research on Rare Books in the NIJL Collections** (2022-2027)
Main Researcher: OCHIAI Hiroshi (Professor at NIJL)

Special Research Projects

Special research projects are collaborative research addresses specific research subject.

General

These projects are collaborative research promoted using various materials (premodern Japanese texts, digital data, microfilms, paper-printed photographs, etc.) accumulated by NIJL as the main research resources. All projects are selected through a public application process.

- **A Venture into Comprehensive Cataloging of Printed Editions Using Micro/Digital Materials in the NIJL Collections**
Main Researcher: TAKAGI Hiroaki, Adjunct Lecturer at KINDAI University (Visiting Researcher at NIJL) (2021–2023)
- **Research and Material Preparation of Kamakura Period Texts of Medieval Stories: A Focus on the Tale of Sagoromo**
Main Researcher: MATSUMOTO Oki, Associate Professor at Kansai University (2021–2023)
- **A Study on The Development of *Wakan* Comparative Literature: The Interaction with Textual Criticism in Postwar Japan**
Main Researcher: SASAGAWA Isao, Adjunct Lecturer at Kokugakuin University (2022–2024)
- **Comprehensive Research on Man'yōshū Manuscripts with Hiragana Interlinear Glosses**
Main Researcher: SHINZAWA Noriko, Professor, Tsurumi University (2023–2025)

Project

These are collaborative research projects conducted on our specific collection (including the ones that loaned to us) and one of the research outcomes is creation, display, and publication of bibliographical introduction of related documents. The project is composed of researchers (applicants) who will conduct an individual research project as a project member, and each of them will also aim to acquire various knowledge through exchanges at the research meetings. (The main researcher is to be selected by the project members at the first meeting.)

All projects are selected through a public application process.

- **Basic Research on the NIJL MATSUNO Yoichi Collection** (2022–2024)
Main Researcher: TATENNO Fumiaki, Associate Professor at Saitama University
- **Basic Research on the NIJL USUDA Jingoro Collection** (2023–2025)
Main Researcher: KUBOKI Hideo, Professor, Nihon University

Modern Literature

This is a collaborative research project on modern Japanese literature. Our faculty member leads a project as a main researcher, and we select other project members.

- **The Relation Between Literary Exempla, Writing, and Readers in Modern Japanese Literature** (2022–2024)
Main Researcher: TADA Kurahito, Associate Professor at NIJL

Regional Material

These are collaborative research projects in which each main researcher, who is an expert in and has in-depth knowledge of one of the five collections selected from among libraries and collections across the country where we have performed surveying and collecting, leads the project. The project members are mainly members of the regional material specialist committee (formerly known as “Japanese literature literature material investigators”) who have been responsible for the surveying and collecting project at each region.

It is required to hold a seminar in each fiscal year on the collection that was used by the project for its research material in order to share the importance of research resources with people in each region.

- **Research on the Tohoku University Kano Collection** (2022–2024)
Main Researcher: SAKURA Yoshiyasu, Professor at Tohoku University
- **Research on Classical Documents Handed Down from Kamo Shrine Including Classical Documents in the Yamamoto Family on Loan from the Kyoto City Library of Historical Documents** (2022–2024)
Main Researcher: KOBAYASHI Kazuhiko, Professor at Kyoto Sangyo University
- **Research on the Soai University Syunsyo Collection: Books and people** (2022–2024)
Main Researcher: CHIBA Shinya, Professor at Soai University
- **Research on the Masamune Collection** (2022–2024)
Main Researcher: KAWASAKI Tsuyoshi, Professor at Shujitsu University
- **Comprehensive Research on the Nakagawa Collection (Yutoku Inari Shrine)** (2022–2024)
Main Researcher: MURAKAMI Yoshiaki, Associate Professor at Kumamoto Gakuen University

International

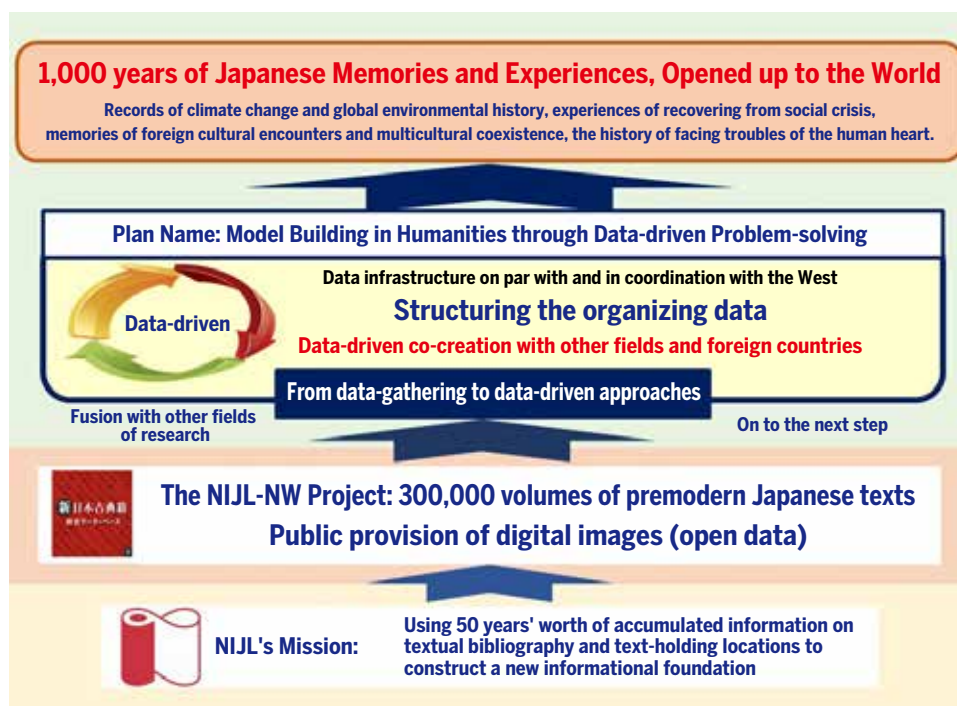
This is an international collaborative research project promoted based on research and study of overseas premodern Japanese texts. Our faculty member leads a project as a main researcher, and we select other project members. (The participation ratio of overseas researchers in each project is assessed)

- **Research on Premodern Japanese Works in University of Hawaii of Manoa and Honolulu Museum of Art** (2022–2024)
Main Researcher: KANSAKU Ken'ichi, Professor at NIJL

Model Building in Humanities through Data-driven Problem-solving (Planned)

Following the ongoing Large-Scale Academic Frontiers Project “Project to Build an International Collaborative Research Network for Pre-Modern Japanese Texts,” we are developing plans to not only make premodern textual data of the sort formerly confined to humanities scholars widely accessible—even to scholars in the natural and social sciences—but also to prepare—and implement—a data-driven, solutions-focused humanities research environment centered on those premodern Japanese texts. This involves the task of modifying the corpus of premodern Japanese textual data to make it machine-readable; the construction of a circulatory framework allowing for findings from collaborative research with scholars from other fields (such as the natural and social sciences) to be incorporated into the larger data infrastructure; and the creation of a solutions-focused paradigm for humanities research under which scholars from the human sciences can contribute, in collaborating with other fields, toward the resolution of various issues in contemporary society.

Overview of the Plan



The Significance of a Data-driven Approach to Japanese Historical Documents

The oldest surviving Japanese historical work is the *Kojiki*, which dates back to 1,300 years. This continuity, with the existence of a written tradition stretching back over 1,000 years within a single country, is a notable phenomenon even when considered on a global scale. The historical data found in texts produced over such a vast span of time includes various records concerned with the constitution of human society—ranging from memories of climate change and environmental history (including natural disasters) to wisdom on multicultural coexistence, records of how troubles of the human heart were faced, and solutions where society could recover after suffering from a crisis.

Owing, however, to the particular properties of Japanese *washi* paper as a medium, these texts have had to be preserved in libraries and research institutions, with only very limited opportunities to be examined by anyone but field specialists, making any comprehensive use and analysis of the information they contain an arduous task.

This is the background to the foundation of the NIJL-NW Project for premodern Japanese texts, which aimed to build an environment in which the enormous amount of accumulated information in such texts, previously mostly hidden from view, was made available—as data—for swift access at need, and not only to scholars in other fields but to anyone at all, in Japan or abroad. Through our institute's NIJL-NW Project, an environment permitting anyone with an internet connection to freely access the complete image data of as many as 300,000 premodern Japanese texts is currently in the process of taking shape.

Our new project, building upon this structure 300,000-items strong, plans to further expand the coverage of its data accumulation to the Meiji period. By linking up with the bibliographic data already released by the National Diet Library spanning this earlier part of the modern period, we will be able to offer diachronic data spanning over 1,000 years, which we are processing to make machine-readable and ready for use by scholars in other fields, such as in the natural and social sciences. We aim, moreover, to make the results of collaborative research projects between humanities scholars and scholars in other fields likewise available as data, through a framework we plan to build that will encourage the circulation of such research results.

A Solutions-focused Paradigm for the Humanities

Research as conducted under a “solutions-focused paradigm” is research which, taking up various major problems facing contemporary society, directs itself in a comprehensive fashion towards the development of solutions for the same. For instance, when designing measures to deal with complex interrelated problems, such as environmental issues, it is necessary for researchers from many different fields to participate and work together collaboratively. By preparing the large-scale data produced by humanities research so as to make it more usable in fields like the natural and social sciences, the way is paved for those involved in humanities research to participate, actively, in efforts to confront those contemporary social issues.

The Project's Five Main Initiatives

The concrete details of this project are as follows.

Construction of Data Infrastructure

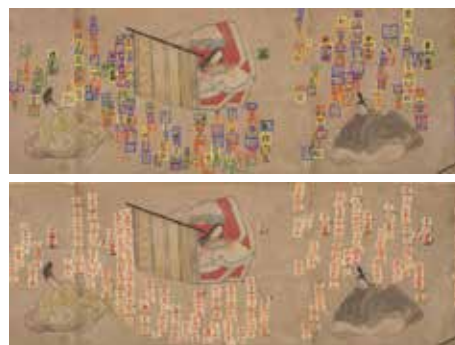
We will develop both the hardware and software aspects of the data-driven research system designed to serve as foundation for this project, creating also a plan for how it will operate, which we will then put into practical implementation.

- ① Developing a data-driven research system (basic stage)
- ② Drawing up guidelines related to issues of rights, etc.
- ③ Organizing an interdisciplinary data catalogue
- ④ Strengthening and expanding coordination functionalities

Applying the Results of Content Analysis

Based on the results of a quasi-collaborative research project currently being conducted, separately, by the National Institute of Informatics, the Research Organization of Information and Systems' Joint Support-Center for Data Science Research (ROIS-DS), the International Institute for Digital Humanities, and Toppan Printing Co., Ltd., we will develop analytical approaches and methods to integrate humanities data into data-driven models. This will involve the extraction of research material using AI technology and its subsequent application in other fields; the development of technology for analyzing and parsing texts, and also search technology adapted to non-textual information (such as images); as well as efforts to bring our own accumulation of data into conformity with international standards.

- ① Consensus-building regarding metadata assignment and the consideration of a universally-applicable framework for the same
- ② Increasing the accuracy of technology used to search and analyze images
- ③ Using AI technology to automate the production of machine-readable data
- ④ Developing tools for the international Text Encoding Initiative (TEI)



AI-based *kuzushi-jī* recognition technology
Image credit: Center for Open Data in the Humanities (CODH)

Applying the Results of Content Analysis

Transforming the kind of evidential data previously confined to use in the human sciences into data that can also be utilized by the natural and social sciences, we will engage in collaborative research projects directed towards the resolution of various issues facing contemporary society.

- ① The expansion of document-based disaster studies
- ② The construction of a document-based anthropology

Research collaboration with the National Institute of Polar Research
The “Meteorite 4D Project” (<https://hoshi-ishi4d.jp/>)



Material Analysis and Investigation

Japan's 1,000 years' worth of texts have not only the accumulated data of their written content to offer, but also all the data they themselves embody as physical objects. One of our aims is to establish a technological basis enabling the extraction—and analysis and investigation—of data from this material aspect of texts, on a scale only rarely attempted in the past.

- ① The construction of an experimental laboratory
- ② The establishment and effective mobilization of analytical technologies
- ③ The establishment of technologies for document restoration



Enhanced detail from a text of *Iroha tanka*,
obtained by high-resolution digital microscope



Promoting a Data-Driven humanities research

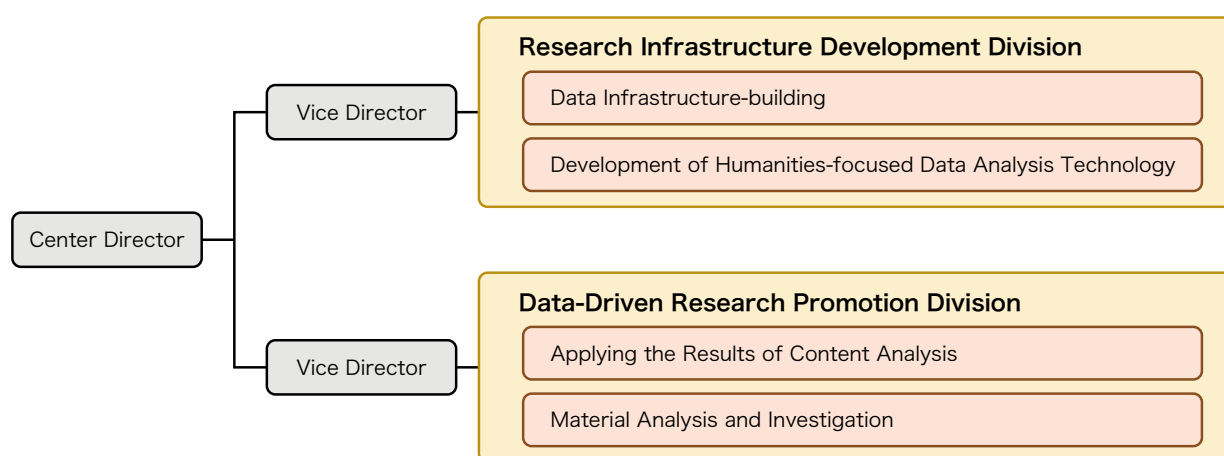
By constructing a data infrastructure, developing various technologies designed for humanities-focused data analysis, applying the results gained from content analysis, and employing techniques of material analysis and investigation—by integrating the full range of findings obtained through these four initiatives, we aim to sketch out what a more data-driven paradigm for the humanities might look like going forward.

The Center for Data-Driven Research on Premodern Japanese Texts

To cater to a society undergoing accelerated digitization and build a new research system to further make open science and data-driven research available, we have established the Center for Data-Driven Research on Premodern Japanese Texts (the DD Center, with “DD” referring to “Data-Driven”). This Center intends to promote problem-solving research in the humanities by means of interdisciplinary collaboration between researchers in the humanities and the information and natural sciences.

The DD Center includes the Research Infrastructure Development and the Data-Driven Research Promotion Divisions; these departments intend to promote four research plans, namely, data infrastructure building, developing humanities-focused data analysis technology, applying the results of content analysis, and material analysis and investigation.

Organization



Main Outcomes

- Staff from the University of Cambridge Digital Library were invited to the lecture meeting “Digital Catalogues, Digital Libraries: Using the Text Encoding Initiative (TEI) for Collections Data,” which was held of February 21st. (The meeting was co-hosted by Islamic Trust Studies, CDH, International Institute for Digital Humanities, ILCAA Core Research “Field Archiving of Memory,” TUFs Field Science Commons, and U-PARL.)
- The Digital Humanities (DH) Portal Site was developed to introduce know-how and informational resources to researchers in the humanities. <https://dhportal.ac.jp/>
- Creation of structured data (TEI data) of Hirose Manyoshu (Vol.1); released on NILJ GitHub



Following the ongoing Large-Scale Academic Frontiers Project “Project to Build an International Collaborative Research Network for Pre-Modern Japanese Texts,” the DD Center is scheduled to undertake a central planning role in advancing the realization of its successor project, “Model Building in Humanities through Data-driven Problem-solving.”

Project to Build an International Collaborative Research Network for Pre-Modern Japanese Texts

(abbreviation: NIJL-NW Project)

This project, headed by NIJL, aims to achieve full digitization of approximately 300,000 premodern Japanese texts in collaboration with universities and other institutions inside and outside of Japan. These images are then incorporated into NIJL's existing bibliographical database to produce a foundation for further research in the large-scale image database, which allows free search of images, which can be used to contribute to the construction of an international collaborative research network.

Such digitization of premodern Japanese works is also helpful against the various dangers that valuable cultural properties face (damage and deterioration of original archival materials and loss through natural disasters), contributing thereby to their successful preservation for inheritance by future generations.

We will promote collaborative research under this project on an international scale, not limiting it only to humanities but extending it also to the natural sciences, by utilizing the database to promote a fusion of humanities and science approaches.

Implementation Plan

The scheduled period for this overarching project spans 10 years, from FY2014 to FY2023. We are working to promote collaborative research projects at an international scale and expand the large-scale image database along with the themes of such collaborative research projects.

Images of premodern Japanese works will be collected, classified by fields, and progressively made available to the public.

① Construction of a database of premodern Japanese works

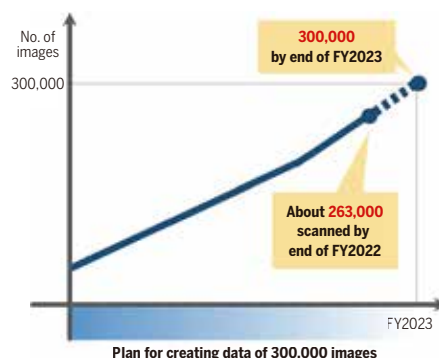
- ◆ Scanning 300,000 volumes of text
- ◆ Operating of the "Union Catalogue Database of Japanese Texts"
- ◆ Improvement of search functions/provision of multilingual functionality

② Establishment of an international collaborative research network

- ◆ Expansion of a network built on cross-disciplinary fusion

③ Promotion of international collaborative research

- ◆ Cultivation of research based on cross-disciplinary fusion
- ◆ Development of a field of "Comprehensive Bibliographical Studies"
- ◆ Promotion of research in the field of documentary tourism resources



Project Implementation Framework

For its partners in this project, NIJL is working with a number of other domestic organizations belonging to the National Institutes for the Humanities, and with bases at 20 public and private domestic universities, in addition to a number of research institutions in Japan and overseas, all alongside its cooperation with research institutions such as the National Institute of Informatics and the National Institute of Polar Research.

The Center for Collaborative Research on Premodern Japanese Texts is run by the Center's Steering Committee, the Network of Premodern Japanese Texts Committee, the International Collaborative Research Network Committee, the Base Cooperation Committee, and the Joint Council on Reporting on the Use of Materials, while drawing upon the opinions of experienced academic figures and the larger research community. A NW Project Implementation Committee was established at NIJL, under the direction of the Center's Steering Committee, to facilitate the understanding of all faculty members regarding this project as a whole and clarify their roles and responsibilities.

FY2022 Digitalization Progress (Approximately 38,000 Items in Total)

● Base Universities

Hokkaido University, Tohoku University, University of Tsukuba, Keio University, Kokugakuin University, University of Tokyo, Rikkyo University, The Tsubouchi Memorial Theatre Museum, Nagoya University, Kyoto University, Doshisha University, Ritsumeikan University, Osaka University, Kansai University, Kobe University, Hiroshima University, and Kyushu University

● Field-specific Highly Specialized Information Collection

Miyagi University of Education, Fukushima University, Ibaraki University, Josai University, The Natural History Museum and Institute Chiba, Chiba University, The Ad Museum Tokyo, Edo-Tokyo Museum, Otsuma Women's University Institute of Texts Studies, The Imperial Household Agency, Ken'ikui Library, National Diet Library, Sanko Library, Shirayuri University, Seikado Bunko, Seisen University, Senshu University, Tokai University, Tokyo University of Foreign Studies, The University Art Museum Tokyo University of the Arts, Tokyo Shoseki Co.Ltd., Toyo University, Nishogakusha University, Yokohama National University, Niigata University, Kaga City Library, Obama City Library, Kogakkan University, Kyoto Institute Library and Archive, International Research Center for Japanese Studies, National Museum of Ethnology, Shitennoji University, Sonoda Women's University, Okayama University, Shujitsu University / Shujitsu Junior College, Yamaguchi University, Saga University, Nakatsu History Museum, University of the Ryukyus, British Library Board

Working toward an Open Data Archive

For premodern Japanese works to be studied and used more freely, we are working toward making our materials more available on an open-data basis. To this end, the following three data sets have been made available to the public on the website of the Center for Open Data in Humanities (CODH) at the Joint Support Center for Data Science Research, as a part of our collaboration with CODH and the National Institute of Informatics, both within the Research Organization of Information and Systems.

All three data sets are made available under a Creative Commons Attribution-Share Alike (CC BY-SA) license, making these data accessible to anyone who agrees to the conditions of that license.

NIJL open data website: http://www.nijl.ac.jp/pages/cijproject/data_set_list.html

● Data set of Pre-Modern Japanese Text (PMJT)

Size: 3,126 items (as of March 2023)

In addition to Japanese literary texts, such as important cultural properties and other rare books, this set includes all kinds of premodern Japanese books in the collections of NIJL on, e.g., medicine, science, and industry, as well as books digitized by NIJL from the collections of the Ajinomoto Foundation for Dietary Culture, such as cook books.

Contents: (1) Digital images of premodern Japanese books (2) Bibliographical data (3) Textual data (4) Tag data

Website: <http://codh.rois.ac.jp/pmjt/>

● Kuzushi-ji Data set (formerly the Data set of PMJT Character Shapes)

Size: Character types: 4,645, Characters: 1,086,326 (as of March 2023)

Data on character shapes have been gathered from 28 different texts, the collections of both NIJL, and the Ajinomoto Foundation for Dietary Culture.

Contents: (1) Corrected digital images of original texts (2) Character coordinate data (3) Character image data

Website: <http://codh.rois.ac.jp/char-shape/>

● Data set of Edo Cooking Recipes

Size: 107 items

There are modern Japanese translations for 43 items, 34 of which have modern recipe data included.

Contents: (1) Digital images of original texts (2) Transliterated textual data (3) Modern Japanese translation data (4) Modern recipe data

Website: <http://codh.rois.ac.jp/edo-cooking/>

The data set is also available on the website of “Cookpad Edo Dishes.”

Building a large-scale image database

NIJL-NW project is scanning approximately 300,000 volumes of text. This data is incorporated into NIJL's pre-existing bibliographical database in the Database of Pre-modern Japanese Works,* which has been publicly accessible since 2017.

As the only existing portal site for pre-modern Japanese texts, the database offers access to the institute's extensive collection of digitized works, built up over many years, along with those of other institutions inside and outside of Japan.

*Since March 1, 2023, the institute has provided access to the Database of Pre-modern Japanese Works and the Comprehensive Catalogue of Pre-modern Japanese Texts as the Union Catalogue Database of Japanese Texts.

Public Website :
<https://kokusho.nijl.ac.jp/>

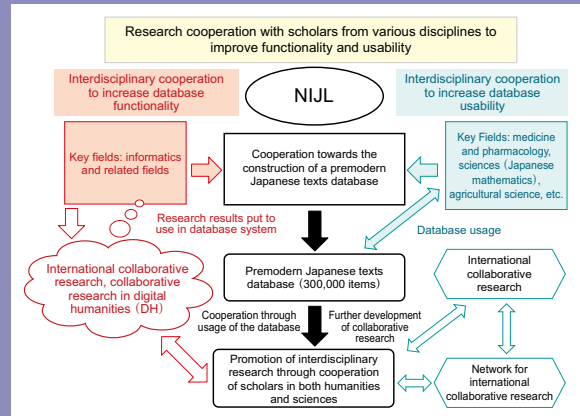


Collaborative Research

The main objective of this project is to bring to life the vast collection of premodern Japanese works housed at NIJL and other institutions. This aspect will be achieved through the construction of a research network that connects researchers from various disciplines, both in Japan and overseas. To realize such a goal, this project seeks to construct, in cooperation with a number of domestic universities, a database of 300,000 fully digitized texts spanning the full variety of fields. In addition, we will pursue advanced collaborative research projects that involve the participation of scholars from a broad diversity of disciplines.

Since 2014, collaborative research projects of a variety of types have been conducted, including (1) "International Collaborative Research" projects that make use of premodern Japanese texts in broad perspective, engaging primarily with scholars overseas on research topics that allow Japanese culture to be examined as a whole; (2) "Interdisciplinary Collaborative Research" projects conducted with, e.g., scientific researchers with the aim of making use of information scattered throughout premodern Japanese texts from a variety of genres; (3) "Inter-institutional Collaborative Research" projects conducted in concert with peer institutions among the National Institutes for the Humanities—the National Museum of Japanese History, the National Institute for Japanese Language and Linguistics, and the International Research Center for Japanese Studies; and "Collaborative Research Projects for Further Research Development" to promote, e.g., advances in search functionality.

Special consideration has been made in all these collaborative research projects to encourage the participation of young or female scholars, as well as scholars from overseas, and several of these projects have won international acclaim, involving researchers from over 40 different fields.



《FY2023 Collaborative Research Projects》

International Collaborative Research

● Joint Research on Generating Metadata Linked to Images (2021–2023)

Unit A: Research on Generating Content Metadata (including its use as teaching material)

Unit B: Forming Digital-based Research Methods and Building International Information Bases

Interdisciplinary Collaborative Research

● 4D Meteorite Project (on meteorites) (2020–2023)

Collaborating organization: National Institute of Polar Research and others

● Enhancing Interdisciplinary Studies in Humanities and Sciences to Utilize Historical Records for the Reduction of Disaster-based Damage and Adaptation to Climate Change (2020–2023)

Collaborating organization: Ibaraki University Global and Local Environment Co-creation Institute and others

● Historical Approach to Research on Solar Rotational Cycle in Lightning Activity (2021–2023)

Contact institution: Musashino Art University and others

● Developing Educational Programs Using ICT Based on Images of Premodern Texts (2020–2023)

Collaborating organization: Shinshu University

● Developing Educational Tools Using ICT Based on Images of Premodern Texts (2020–2023)

Collaborating organization: Toyota Technical College

● Building the Foundations of Education and HR Training Programs on Digital Humanities and Arts (2021–2023)

Collaborating organizations: International Institute for Digital Humanities and others

● Rediscovering Japanese Culture Based on Writings (Food and Clothing) (2022–2023)

Collaborating organization: Kyoto Prefectural University, Ritsumeikan University

In addition, the Institute plans to develop collaborative research in new fields such as zymology, infectious diseases, and marine resources.

Collaborative Research Projects for Research & Development

NIJL conducts collaborative research for development to promote improved search functions

- Collaborative Research on Converting Images into Text (Toppan)
- Extracting Non-text Keywords Using Word-spotting and Other Methods (Future University Hakodate)
- Comprehensive Research on AI-to-Text Solutions (National Institute of Informatics, Center for Open Data in the Humanities)
- Research on Improving Search Functions and Applying Research on Pre-Modern Works (National Institute of Informatics, Center for Open Data in the Humanities)
- Developmental Research on Text Encoding Initiative (International Institute for Digital Humanities, Hokkaido Gakuen University, and others)
- Applied Research on Information Processing of Books as Materials with High-dimensional Processing of Multidimensional Optical Information (Nara Institute of Science and Technology, Jissen Women's University Bungei Material Laboratory)
- Collaborative Research on Improving Algorithms in Digital Image Production and Cataloging (British Library, Shirayuri Women's College)
- Research on Next Release IIIF Viewer (University of Tokyo Historiographical Institute, International Institute for Digital Humanities)
- Studies on Research Tools Using Character Form Data (Nara National Research Institute of Culture Properties, National Institute for Japanese Language and Linguistics, and others)

Dissemination of Research Results and Public Relations Activities

To increase public awareness of these various projects, we are conducting press releases and live stream broadcasts of international conferences, in addition to promoting projects through activities that involve the participation of the public.

FY2022 Press Release

The institute has been producing images in cooperation with various institutions, and has proactively engaged in publicity by issuing press releases when such images are made accessible to the public.

June 9 (Thu), 2022	Part of the collection of the Sanko Library has been made accessible online in high-resolution digital image format. Seven works, covering 80 volumes (hand scroll) are available, including the Ryuuei Onfusuma Shukuzu and the Shimpan E-iri Heiji Monogatari.
July 7 (Thu), 2022	A New Window into the Sekaido Bunko Collection! NIJL has digitalized the pre-modern Japanese texts (in Japanese binding) at the Sekaido Bunko Art Museum and made them available online.
November 30 (Wed), 2022	A total of 62 items from Ikedake bunko held by Okayama University Library have been made accessible online as high-resolution digital images. These include the Torikaebaya Monogatari and Shouzoku Ezuhon.
December 1 (Thu), 2022	Ad Museum Tokyo, the only museum of its kind in Japan, has placed 682 items from its historic collection online. These include Edo-period nishki-e woodblock prints and pre-modern Japanese texts.

Symposia and Other Events Hosted by the Institute

- NIJL has hosted the Eighth International Conference on Pre-modern Japanese Texts. (November 11 (Fri), 2022)

The event was streamed on YouTube Premiere and through video. After the event, archival footage was made available on a dedicated page on the Center's website.

<https://www.nijl.ac.jp/pages/cijproject/sympo2022.html>



- With Jissen Women's Educational Institute Bungei Material Laboratory, NIJL co-hosted the international symposium "The Future of Kohitsugure Research 1: Achievements of Combining the Humanities and Sciences." (July 10 (Sunday), 2022)
- With the Sanko Library, NIJL co-hosted the second online lecture meeting to commemorate the 120th anniversary of the former Ohashi Library. (July 30 (Sat), 2022)

Other Activities

- NIJL had an exhibition booth at the 13th Education Expo Japan-EDIX Tokyo to introduce the Database of Pre-modern Japanese Works. (Wed - Fri, May 11-13, 2022)
- NIJL held a panel discussion, "The Future of Collaborative Data-Driven Research in Japanese Studies," at the 2022 ASCJ Conference, which was held online. (July 3 (Sun), 2022)
- At the 24th Library Fair & Forum, held online, NIJL presented content on the Database of Pre-Modern Japanese Works, and introduced the topic of digital image production. (Tue- Wed, November 1-30, 2022)
- We also participated in the international symposium "The Digital Turn in Early Modern Japanese Studies," with the theme of DH in this field. (Fri - Sun, December 2-4, 2022)
- Two issues (Nos.18 and 19) of the newsletter "Fumi," dedicated to introducing the NIJL-NW Project, were published. These issues are available from our website in the form of pdf files.
URL : https://www.nijl.ac.jp/pages/cijproject/newsletter_fumi_new.html



Publicly Available Databases

The institute maintains various databases for purposes of research into Japanese literature and other related fields. The following databases are available from the database page of our web site:

<https://www.nijl.ac.jp/search-find/#database>

●NIJL OPAC

This is a catalog of the institute's collection of books, documents, and magazines (occasional publications) from the Meiji Period onward.

●Database of Academic Papers in Japanese Literature and Archival Studies

The database offers a collection of papers on Japanese literature from 1888 to today, along with Japanese papers on Archival Studies.

The Database lists information on studies in Japanese literature, Japanese linguistics, and Japanese language education compiled in journals, bulletins (monograph compilations), and other forms in the NIJL holdings.

The Archival Studies papers listings include content created with the Catalog Editing Committee of the Japan Society of Archives Institutions, Kanto District Branch.



Database of Academic Papers in Japanese Literature and Archival Studies

●Union Catalogue Database of Japanese Texts

This is a searchable database of works, authors, bibliographic information, and high-resolution images of pre-modern texts (from the Edo Period and earlier), and other materials held by NIJL and various other institutions inside and outside of Japan.



Union Catalogue Database of Japanese Texts

●Archival Holdings on Japanese History

These are archives of early modern and modern documents, records, and objects collected and maintained by the Ministry of Education Historical Archives (founded in 1951) and its successor, the National Institute of Japanese Literature.

●Directory of Overseas Collections of Old and Rare Japanese Books, Other Print Materials, and Manuscripts

This directory provides information in English (and in Japanese in some cases) on contacts for institutions outside of Japan keeping premodern Japanese texts, and the accessibility of their collections.



Archival Holdings on Japanese History

as of April 1, 2023

*1 See p. 12 for information on the Union Catalogue Database of Japanese Texts.

*2 Some of the database material released up to FY2022 is available as research information at the NIJL Repository.

Activities Overview

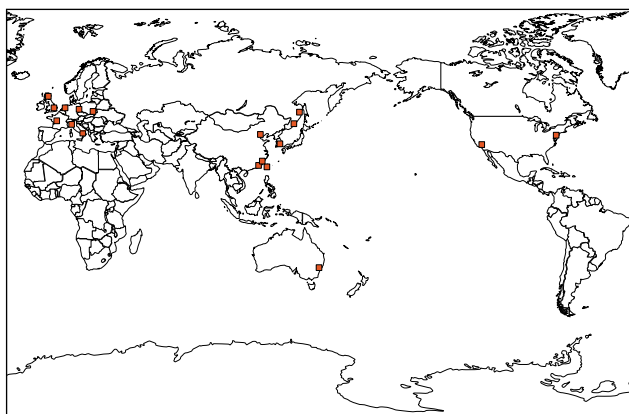
Aims of the Work undertaken by NIJL

This institute performs specialized surveys and research on documents of Japanese literature and related fields housed at institutions both in Japan and overseas. It also seeks to expand its own collection of original materials and photographic facsimiles, organize and preserve information gathered on such materials' location and bibliography, and provide a foundation for the study of Japanese literature and related fields. It also makes its materials available in various ways to users in Japan and abroad, while contributing back to the society through initiatives such as exhibits and lecture meetings.

1 Surveying and Collecting

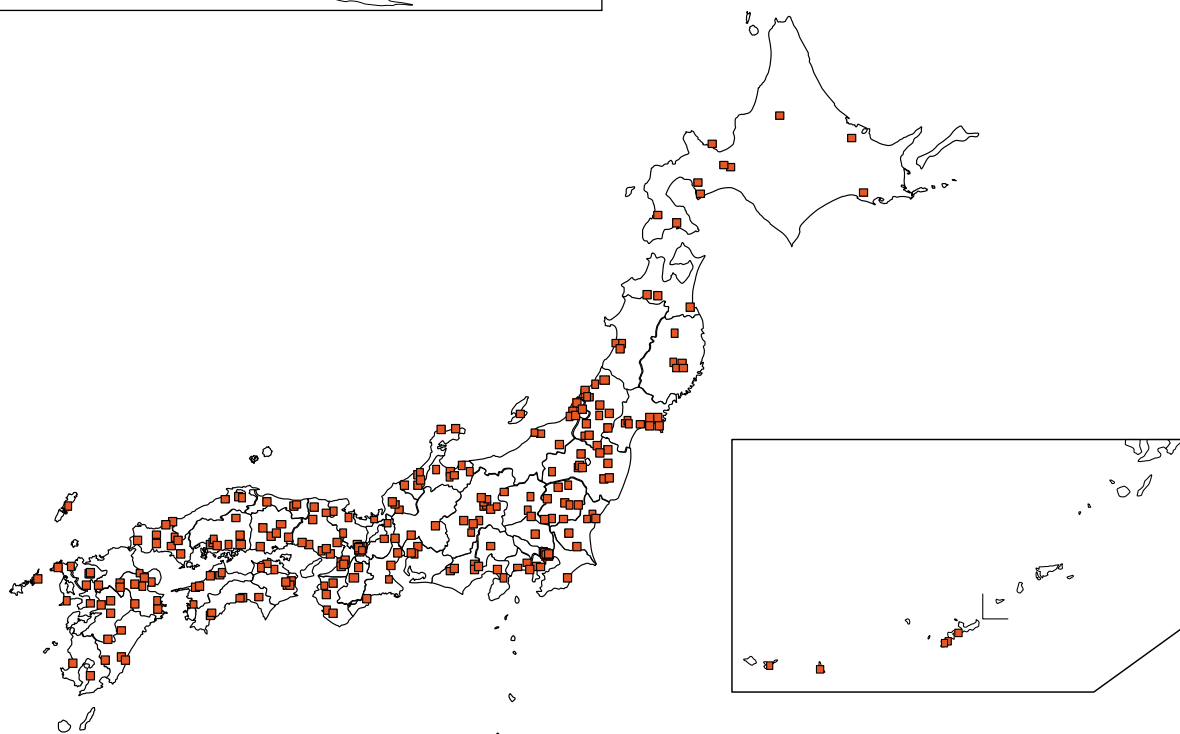
In collaboration with researchers from universities throughout Japan, institute personnel travel to the sites of collection of original documents—such as manuscripts and printed editions—related to Japanese literature and engage in research with a bibliographical focus.

In conjunction with such research, original materials stored in libraries and archives throughout Japan are added to NIJL's own collections through full-volume photography by means of microfilm or digital images and thereby made available to the general public.



Items Surveyed or Collected to Date

Surveyed	Japan	1,036 locations	424,519 items
	Overseas	67 locations	16,367 items
	Total	1,103 locations	440,886 items
Collected	Japan	396 locations	223,991 items
	Overseas	13 locations	1,518 items
	Total	409 locations	225,509 items



■ List of Locations Surveyed FY 2022

Kanto Region
The Imperial Household Agency, Archives and Mausolea Department
National Institute for Japanese Language and Linguistics
Saimyoji Temple
Chubu Region
Hamamatsu City Kamonomabuchi Museum
Chugoku / Shikoku Region
Tottori Prefectural Museum
Tezen Museum
Masamune Bunko
Hikari City Cultural Center
Uwajima Date Cultural Properties Association
Oozu City Library
Kochi Castle Museum of History
Kyushu/Okinawa Region
Yutoku Inari Shrine (Nakagawa Bunko)
Suwa Shrine (Suwa Bunko)
Oita Prefecture Ancient Sages Historical Archives
Modern Materials
National Institute of Japanese Literature (<i>koudanbon</i> Collection)

■ List of Locations Collected FY 2022

Kanto Region
The Imperial Household Agency, Archives and Mausolea Department
Hosei University (Kozan Bunko)
Japan Women's University Library
Chubu Region
Toyama City Public Library (Yamada Yoshio Bunko)
Hamamatsu City Kamono Mabuchi Memorial Hall
Kinki Region
Kyoto Women's University (Roan Bunko)
Kyoto City Library of Historical Documents
Kyoto Kanze Noh Theater
Zuikoh-ji Temple
Chugoku / Shikoku Region
Tottori Prefectural Library
Tezen Museum
Masamune Bunko
Hikari City Cultural Center
Sohonzan Zentsuji Temple
Yasuda Women's University Library (Inaga Bunko)
Uwajima Date Cultural Properties Association
Oozu City Library
Kochi Castle Museum of History

Kyushu / Okinawa Region
Yutoku Inari Shrine (Nakagawa Bunko)
Suwa Shrine (Suwa Bunko)
Hizen Shimabara Matsudaira Bunko
Matsura Historical Museum
Hirose Museum
Modern Materials
Tokyo Keizai University
Kasaoka City Board of Education (Morita Shiken's autograph manuscript)
Nakahara Chuya Memorial Museum
Other Archive
EGAWA Bunko
Sanada Treasures Museum (Sanada Family Collection)

*Honorific titles of owners
have been omitted.

2 Public Access to NIJL's Collections

The institute's library allows the perusal of documents and provides various copy services. It is also possible for users in remote locations to access documents and copy services through the interlibrary loan system. Those not affiliated with any university can request copies directly by post, fax, or email. In addition, collections inquiries by telephone and reference questions submitted by post, fax, or email are also accepted.



Library

Library Services Guide

Service Hours	Hours of Operation	Weekdays	9:30–18:00 (Historical documents and valuable materials are available only between 9:30–17:30)
		Saturdays	9:30–17:00 (Historical documents and valuable materials are available only between 9:30–16:30)
	Closed Stack Requests	Weekdays	9:30–17:00
		Saturdays	9:30–16:00
	Copy Services		9:30–16:00
Closed			<ul style="list-style-type: none"> • Sundays and public holidays • 4th Wednesdays of every month • Summer holiday • New Year holiday (December 27–January 5) • Annual collections inspection period (In addition, the institute may be close for other reasons. Please check posted signs and the institute's web page.)
Services Offered	Collections	Microfilm, Japanese rare books (manuscripts and print editions), historical documents, printed books, photographic facsimiles, books on local history from across the country, and periodicals. (On Saturdays, historical documents, rare books, special collections, and books on loan to the library can only be viewed by prior appointment.)	
	Photo duplication Services	Electronic photocopying (including photocopying using a reader printer) and positive films (excluding historical documents)	
	Photography	Historical documents and other such materials excluded from electronic photocopying	
	Lending	Overnight lending of printed-out facsimile copies (some books excluded)	
	Lending for Exhibitions	Lending for exhibitions at libraries, archives, museums, etc.	
	Reference Research	Accepting and responding to questions and requests for document searches	
	Interlibrary Loan	Photocopying and lending through the interlibrary loan system (ILL)	
Inquiries	Phone	Usage in General : 050-5533-2926, Information Services Section Interlibrary Loan (ILL): 050-5533-2926, " Historical documents: 050-5533-2930, " Use in Publications: 050-5533-2930, "	
	F A X	042-526-8607	
	E-mail	etsuran@nijl.ac.jp	

Materials in NIJL's Collections

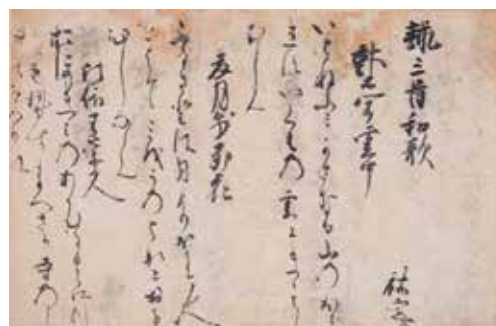
Types of Materials			No. of Items, etc.	No. of Volumes, etc.
Microfilm Materials	Microfilm	Japanese Literature	195,097 items	38,192 reels
		History	202 items	6,308 reels
	Printed Photographic Facsimiles	Japanese Literature	—	68,935 volumes
		History	—	11,196 volumes
Books	Premodern Japanese texts		19,132 items	63,227 volumes
	Printed books, printed-out photographic facsimile copies, etc.		115,739 items	201,824 volumes
	Periodicals		9,552 publications	—
	Microfiche	Japanese Literature	16,667 items	57,358 sheets
Historical Documents			508 items	about 520,000 items
Historical Documents and Other Materials on Loan to the Library		Japanese Literature	13 items	9,540 volumes
		History	17 items	6,847 items

Representative Collection Materials

Materials Related to Japanese Literature

Rare Books

Kasuga Kaishi (Important Cultural Property), a 1682 Aratoya edition of *Koushoku Ichidai Otoko*, an illustrated old moveable-type edition of *Soga Monogatari*, a Kamakura-era manuscript of *Shin Kokin Wakashu*, a Nara ehon edition of *Utsuho Monogatari*, the *Shin Kokin Wakashu Senka Soko*, and a Kamakura period manuscript of *The Tale of Genji* (16 chapters) (221 items in all)



Kasuga kaishi
(National Institute of Japanese Literature collections)

Special Collections

Kokin Wakashu (Collection of Ancient and Modern Poetry) and related works formerly owned by Kyoichi Nishishita (Hatsukari Collection); anthologies of Chinese poetry from the Edo and Meiji periods formerly owned by author Shinichiro Nakamura (Japanese Chinese Poetry Collection); *Essays in Idleness* and other works (Isao Kojo Collection); a collection centered on the *Shin Kokin Wakashu* (New Collection of Ancient and Modern Poetry) (Kaifu Rogetsu Collection); diaries, records, and documents related to court lore, literature, and the performing arts from the Tayasu Tokugawa family (Tayasu Tokugawa family materials (Denpan Bunko)); books, documents and records collected by Ikujiro Ukai, a politician of the Meiji era (Ukai Bunko); a collection including works by Soko Yamaga (Yamaga Bunko); a collection centered on *The Tales of Ise* and related works (Tesshinsai Bunko); and 24 others.



Closed Stacks

Materials on Loan to the Library

Materials from 13 collections, including, among others, six items from the collection of KANEKO Motoomi, 156 items from the ancient manuscript fragment collection of SAKATA Yasuyoshi, and 50 boxes containing 6,690 pages of documents from the Masuda Collection.

Historical Documentary Materials

The Historical Materials collection focuses on the early modern and modern periods and contains over 520,000 items, covering nearly every region of Japan.

The early modern materials consist for the most part of town- and village-level documents (such as the Owari no Kuni Nagoya Moto Zaimokucho Inuyamaya Kandoke documents, and the Shinano no Kuni Takaigun Higashi Ebemura Yamada Shozamonke documents), but they also contain warrior-class documents (such as the Shinano no Kuni Matsushiro Sanadake documents, the Awa no Kuni Tokushima Hachisuka documents, and the Yamashiro no Kuni Yodo Inabake documents), court-family documents (such as the Yamashiro no Kuni Kyoto Sanjonishike documents), and documents from religious institutions (such as the Yamashiro no Kuni Kadonogun Saga Tenryūji Tacchū Rinsenji documents).

The modern collections contain documents dealing with prefectural, municipal, and village-level government (such as the Aichi Prefectural Office documents and the Okayama, Hiroshima, and Tottori Prefectural and Municipal documents).

3 International Exchange

Japanese literature is a field of study pursued throughout the world. An important challenge facing Japanese literary research today is learning to perceive Japanese literature from a variety of different research viewpoints and methods. Based on such an awareness, NIJL has established the International Collaboration Division to revitalize activities of international exchange. As part of this, we have actively engaged in a number of activities in Japan and overseas, such as the hosting of various symposia, seminars, and conferences devoted to research on premodern Japanese texts.

Furthermore, NIJL's specialized Global Consortium for Japanese Textual Scholarship was established as a private organization on November 1, 2020, together with participating organizations in Japan and overseas, as a space for sharing limited resources among multiple organizations and for complementing one another's strengths in the study of Japanese classical literature. The secretariat for this consortium is at NIJL. As of the end of March 2022, there are 82 participating organizations (41 in Japan and 41 overseas). <https://kotenseki.org/>

Academic Exchange Agreements

As an international center for research on Japanese literature, NIJL is actively engaged in a variety of academic exchange projects with researchers and research institutions overseas. In particular, it is the conclusion of academic exchange agreements with overseas institutions that makes stable, ongoing research exchange possible.

Activities center on the exchange of researchers between institutions in Japan and overseas, as well as the hosting of international research symposia. They also include the implementation of joint surveys and joint research projects and extend to the hosting of graduate students for short-term training.

Presently, academic exchange agreements have been concluded with the following overseas institutions:

- Collège de France, Institute of Advanced Japanese Studies (France)
- Ca' Foscari University of Venice, Department of Asian and North African Studies (Italy)
- The University of Naples "L' Orientale" (Italy)
- Sapienza University of Rome, Italian Institute of Oriental Studies (Italy)
- University of Florence, Department of Education, Languages, Intercultural Studies, Literatures and Psychology (Italy)
- Beijing Foreign Studies University, Beijing Center for Japanese Studies (China)
- Leiden University, Faculty of Humanities (The Netherlands)
- The University of British Columbia, Faculty of Arts, Department of Asian Studies (Canada)
- Columbia University, Department of East Asian Languages and Cultures (U.S.)
- Korea University, Global Institute for Japanese Studies (Republic of Korea)
- University of California, Berkeley, C.V. Starr East Asian Library (U.S.)
- Berlin State Library (Germany)
- Vatican Apostolic Library (Vatican City State)
- University of Hawaii at Manoa, Department of East Asian Languages and Literatures (U.S.)
- Heidelberg University, Institute of Japanese Studies (Germany)
- Goethe University Frankfurt am Main, Faculty of Linguistics, Cultures, and Arts (Germany)
- The British Library Board (U.K.)
- The Smithsonian Institution (Freer Gallery of Art & Arthur M. Sackler Gallery) (U.S.)
- Inter-University Center for Japanese Language Studies

Materials Workshop

Aimed at next-generation researchers, this workshop is co-hosted with the Inter-University Center for Japanese Language Studies (IUC) and held two or three times a year, generally on an in-person basis. The workshop offers a useful forum that gives practical guidance primarily for developing research projects based on pre-modern Japanese texts. The content includes general introductions to the handling of various pre-modern texts, explanations of survey and usage methods for primary-source materials, and advice on how to profitably use the NIJL databases and other similar resources.

International Conference on Japanese Literature (ICJL)

This Conference is intended to further studies on Japanese literature, to foster next-generation researchers in the field, and to deepen the links between researchers inside and outside of Japan. While in the past held each fall, it was moved to early May starting with the 44th Conference, in order to facilitate the participation of foreign exchange students.

The 46th Conference will be held in a hybrid in-person/online format.

Dates: Sat/Sun May 13-14, 2023

Venue: National Institute of Japanese Literature (Tachikawa City, Tokyo) and online (Zoom Meetings and YouTube Livestream)



45th ICJL poster
(May 14-15, 2022 - 143 participants total)

Seminars on Premodern Japanese Books

We hold seminars focused on the bibliography and literary culture of premodern Japanese books, one of the foundations of Japanese culture, in collaboration with overseas researchers and research institutes.

- | | | |
|------|--------------|--|
| 8th | Mar 1, 2019 | University of Hawaii at Manoa and the Honolulu Museum of Art (U.S.) |
| 9th | Feb 27, 2021 | Held online (jointly with the Beijing Foreign Studies University, Beijing Center for Japanese Studies) |
| 10th | Mar 19, 2022 | Held online (jointly with the Beijing Foreign Studies University, Beijing Center for Japanese Studies) |
| 11th | Mar 26, 2023 | Held online (jointly with the Beijing Foreign Studies University, Beijing Center for Japanese Studies) |



The 8th Seminar on Premodern Japanese Books



The 11th Seminar on Premodern Japanese Books poster

Exchange with Overseas Researchers (Foreign and Outside Researchers)

To promote the internationalization of research on Japanese literature, we invite research fellow scholars from abroad who are active on the front lines of research into Japanese literature and other related fields, thus offering our institute as a site for the use of academic resources and exchanges of expertise.

4 Community Outreach Activities

NIJL contributes to the society by widely publicizing the results of its research via exhibitions, lectures, symposia, and various seminars.

Exhibitions

The institute hosts exhibitions in its first-floor exhibition room to showcase the results of its documentary surveys and other collaborative research projects.

Planned Exhibitions for FY2023

Regular Exhibition:

“Various Japanese Writings” Planned to be held March 1 to July 24, 2023

This exhibition introduces manuscripts, woodblock-printed texts, and particularly unique texts from each period after giving explanation of the morphological first and then the content structure of Japanese books. The exhibition is intended to provide visitors with a basic knowledge of Japanese books as well as an opportunity to think about Japanese books.



Exhibition room

Regular Exhibition:

“Japanese Literary History Based on Documents” Planned to be held from October 4, 2023, to February 14, 2024

This exhibition traces the history of Japanese literature from ancient times until the early Meiji period by books (premodern Japanese texts). While taking into account recent research trends, the exhibition has shown the flow of literary history by focusing on works that are familiar from textbooks. The exhibition is designed to allow visitors to enjoy various aspects of the rich history of Japanese classical literature while experiencing the appearances of manuscripts and the texture of woodblock-printed books.

Special Exhibit Corner

While the Regular Exhibition is being held, a special exhibit corner will be set up within the exhibition room to display works from the institute's holdings.

Web Exhibition room

The web exhibition room provides an online experience to view our regular exhibitions in cyberspace.

The institute's website
<https://www.nijl.ac.jp/koten/webtenji/>



Lecture Series

(1) Archives College

Long- and short-term courses are offered for the purpose of cultivating staff specialized in tasks such as archival record preservation and the provision of user services.

The long-term lecture course is scheduled to be held at the institute over a total of six weeks from Tuesday, July 18 to Friday, August 4 and from Monday, August 21 to Friday, September 8. Further, a short course will be held at Toyonokuni Joho Library in Oita City, Oita Prefecture, from Monday, November 6, to Saturday, November 11.



2022 Archives College Short-Term Course

(2) Workshop on Pre-Modern Japanese Books

This workshop, held in cooperation with the National Diet Library, seeks to impart to librarians from Japan and abroad who deal with premodern Japanese books the requisite basic knowledge about such books and their handling.

Planned to be held in FY2023 for four days from Tuesday, July 11 to Friday, July 14.

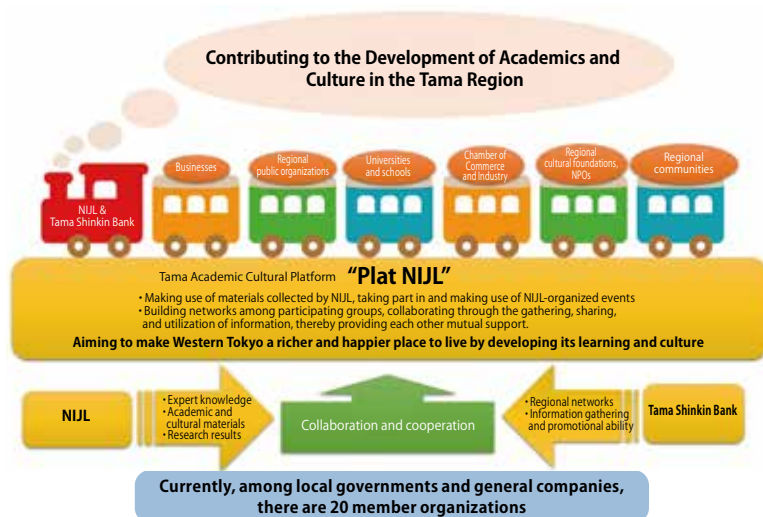


Workshop on Pre-Modern Japanese Books (2019)

The Tama Academic Cultural Platform “Plat NIJL”

NIJL concluded an agreement with Tama Shinkin Bank to establish the Tama Academic Cultural Platform “Plat NIJL,” to be constituted with NIJL at its core, by various businesses, local government bodies, universities, and other groups as a platform to ensure the continual implementation of projects promoting academic research and cultural activities in the Tama Region.

“Plat NIJL” projects will involve the holding of courses and lectures on academic research and cultural activities in the Tama Region, collaboration and cooperation with various groups to make use of NIJL materials and databases, and the promotion of industry–academy cooperation in general.



Please address inquiries to Staff in charge of Plat NIJL,
National Institute of Japanese Literature
Email: platform@nijl.ac.jp

Projects for FY2022

- Lecture meeting: Why Is the Song of Minamoto no Sanetomo So Moving?
- NIJL Café
- Talk Series: Discussing Japan's Classics and the Modern Era with Creators The 9th session: WATANABE Kankorongo Sayaka and Robert Campbell



Kokubunken Talk

NIJL Arts Initiative: Innovation through the Legacy of Japanese Literature

Since October 2017, we have been implementing the project, the NIJL Arts Initiative: Innovation through the Legacy of Japanese Literature. This project is to bring artists from various fields and non-native Japanese translators into contact with our rich collection of premodern texts and to co-create new cultural and artistic values through the creative workshops with our researchers.

In the residency program, we invite artists-in-residence (AIR) and translators-in-residence (TIR) to hold workshops with our researchers to create a wide variety of works that transcend existing frameworks through exchanges of opinions and mutual inspiration on premodern texts.

A “classics interpreter,” a young researcher with expertise in Japanese classical literature, will support this creative process. Working closely with AIR/TIR, the “classics interpreter” assists the creative activities by building a bridge between AIR/TIR and researchers. In addition, the “classics interpreter” disseminates Japanese culture both domestically and internationally from various angles, including translation of activity records into multiple languages, SNS, and websites while collaborating with private companies and local governments.



Creative Workshop



NIJL Arts Initiative Paired Exhibition: Someya Satoshi/Tanihara Natsuko “Darkness and Light: A Deep-coiled Tension”

Website for the NIJL Arts Initiative
<https://www.nijl.ac.jp/pages/nijl/en/>



Researchers (as of April 1, 2023)

Director General

Name	Research Interests
WATANABE Yasuaki	History of waka

Research Department

Name	Position	Research Interests
IRIGUCHI Atsushi	Professor, Deputy Director General (in charge of planning and coordination)	Early modern literature
KANSAKU Ken'ichi	Professor, Deputy Director General (in charge of research)	Early modern Japanese literature, particularly the history of waka and the arts
UNNO Keisuke	Professor (Director)	Medieval literature, waka literature and the history of classical scholarship, with a focus on the Imperial Court
KIGOSHI Shunsuke	Professor (Director)	Early modern Japanese literature, particularly the history of the novel
NISHIMURA Shintaro	Professor (Director)	Preservation of historical records in areas affected by the Fukushima nuclear disaster, editing of the <i>Oaza Magazine</i>
FUJIZANE Kumiko	Professor (Director)	Political culture of early modern and restoration-era Japan and the establishment of documentary book studies
YAMAMOTO Kazuaki	Professor (Director)	Research on 19th-century Japanese literature
SAITO Maori	Professor, *Chair of Japanese Literature (SOKENDAI)	Medieval literature
OKAZAKI Makiko	Professor	Research on Japanese literature of the Heian and medieval periods and on waka literature
OCHIAI Hiroshi	Professor	Medieval literature, medieval performing arts and the bibliographical study of Japanese classics
WATANABE Koichi	Professor	Early modern Japanese urban history and archives studies
OYAMA Keizo	Specially appointed Professor	Research on informatics, information retrieval, and construction and collaborative use of data sets to be used in research
AIDA Mitsuru	Associate Professor	Japanese literature of the Heian and medieval periods; Study of scholarship and commentary, with a focus on children's educational texts; and setsuwa literature; humanities information studies
OTA Naohiro	Associate Professor	Regional government in early modern Japan and early-modern archives studies
KATO Kiyofumi	Associate Professor	Relations between East Asia and Japan since the beginning of the modern era
DAVIN Didier	Associate Professor	Medieval Buddhism and literature
TADA Kurahito	Associate Professor	"Citations" in modern Japanese literature
NAKANISHI Satoko	Associate Professor	Heian-period literature and narrative literature
NOMOTO Tadashi	Associate Professor	Advance of information usage in the study of Japanese literature
MATSUDA Kuninori	Associate Professor	Utilization of computing technology in the humanities
YAMAMOTO Yoshitaka	Associate Professor	Japanese literature in Classical Chinese, particularly of the Edo and Meiji periods

Name	Position	Research Interests
KIKUCHI Nobuhiko	Specially appointed Associate Professor	Digital history, digital public history, and the modern and contemporary history of Spain
MORIOKA Tomohiko	Specially appointed Associate Professor	Informatics on Chinese characters, character processing based on character ontology, and general character theory
EDO Hideo	Assistant Professor	Heian-era literature, narratology
KAWAKAMI Hajime	Assistant Professor (Tenure Track)	Japanese medieval literature; in particular waka literature of the Muromachi Period
KNOTT Jeffrey	Assistant Professor	Classical studies and the reception of classical literature in medieval Japan
KUME Shiori	Specially appointed Assistant Professor	Japanese oral performance literature (<i>kowakamai</i> , <i>sekkyo</i> , <i>ko-joruri</i>) from the end of the medieval to the beginning of the early modern period
MATSUNAGA Ryusei	Specially appointed Assistant Professor	Research on publishing culture in early modern and modern Japan and on booklending (<i>kashihon</i>) culture

The Center for Data-Driven Research on Premodern Japanese Texts

Name	Position	Research Interests
OYAMA Keizo	Director (dual post)	Research on informatics, information retrieval, and construction and collaborative use of data sets to be used in research
UNNO Keisuke	Deputy Director (dual post)	Medieval literature, waka literature and the history of classical scholarship, with a focus on the Imperial Court
KIGOSHI Shunsuke	Professor (dual post)	Early modern Japanese literature, particularly the history of the novel
NISHIMURA Shintaro	Professor (dual post)	Preservation of historical records in areas affected by the Fukushima nuclear disaster, editing of the <i>Oaza Magazine</i>
YAMAMOTO Kazuaki	Professor (dual post)	Research on 19th-century Japanese literature
MATSUDA Kuninori	Associate Professor (dual post)	Utilization of computing technology in the humanities
KIKUCHI Nobuhiko	Specially appointed Associate Professor (dual post)	Digital history, digital public history, and the modern history of Spain
MORIOKA Tomohiko	Specially appointed Associate Professor (dual post)	Informatics on Chinese characters, character processing based on character ontology, and general character theory

Center for Collaborative Research on Premodern Texts

Name	Position	Research Interests
YAMAMOTO Kazuaki	Director (dual post)	Research on 19th-century Japanese literature
KANSAKU Ken'ichi	Deputy Director (dual post)	Early modern Japanese literature, particularly the history of waka and the arts
NAGASAKI Kiyonori	Visiting Professor	Research on the digitalization of humanities information (especially in relation to data publication and the fostering of young talent in humanities informatics)
KITAMURA Keiko	Associate Professor	Theory of information science in relation to humanities
MATSUDA Kuninori	Associate Professor (dual post)	Utilization of computing technology in humanities
IKUURA Hiroyuki	Specially appointed Assistant Professor	Medieval poetry, women's literature, and the bibliography of premodern Japanese texts
IGURO Kahoko	Specially appointed Assistant Professor	Picture scrolls and picture books from the medieval to the beginning of the early modern period

Support for Young Researchers

■ Special Inter-University Research Fellows

At the request of national, public, and private universities, in FY1979, the Graduate School Education Collaborative System was established to promote cooperation in graduate-level education and began accepting graduate students. The program later expanded participation in 1998 with the inauguration of the Special Inter-University Research Fellows Program.

Students currently studying Japanese literature and related subjects in doctoral or master's programs at domestic national, public, and private universities are eligible for acceptance as Special Inter-University Research Fellows and provided at NIJL with the supervision they need. NIJL hosts around ten fellows in total at a time, each as a general rule for a period of one year, beginning in April and ending the following March.

Fiscal year	2018	2019	2020	2021	2022
Total Active Fellows	2	6	6	4	6



■ Events Aimed at Young Researchers

■ International Conference on Japanese Literature (ICJL) (FY2022 results)

Overview: Online research presentations (oral presentations)

Poster presentations (information session)

11 research presentations, divided into 4 sessions (including 8 young researchers)

5 poster presentations (including 3 young researchers)

Participants: 143 (2 days' total)

■ Materials Workshop Series (FY 2022)

This workshop was held twice, on November 4 and January 13 at NIJL and, in part, online. Participants: Up to 61, including participants from Japan, the United States, China, and Italy.

■ Workshop on Pre-modern Japanese Books (FY 2022)

We hold a series of trainings providing introductory-level knowledge on the bibliography of premodern Japanese texts, aimed in particular at young researchers. In FY 2022, this training program was scheduled on the first and second days of the 20th "Workshop on Pre-Modern Japanese Books."

■ Prize in Classical Japanese Literary Scholarship

(Sponsored by the National Institute of Japanese Literature Support Association)

The "Prize in Classical Japanese Literary Scholarship" is a continuation of the "Japanese Classical Literature Association Award" sponsored by the "Japanese Classical Literature Association" foundation, established as the "National Institute of Japanese Literature Support Association" with the goal of encouraging and aiding young researchers of classical Japanese literature.

Eligible recipients of the award (as many as three per year) must have been under the age of 40 at the time of the work submitted for consideration. Three recipients were selected by the award committee for the 15th "Prize in Classical Japanese Literary Scholarship," based upon the committee's consideration of their work (published books) from the period of January to December, 2021.



Graduate Education

Japanese Literature Program, Graduate Institute for Advanced Studies, SOKENDAI

This program's parent institute is the National Institute of Japanese Literature (NIJL), a pioneering organization of inter-university collaboration dedicated to the accumulation and study on a massive scale of academic information derived from the examination of original materials. Students in this program, taking advantage of the cultural resources housed at NIJL, receive an education centered on the development of deep specialized expertise in Japanese literature and related fields, in the course of which they acquire the skills necessary to survey relevant documentary materials and analyze them comprehensively.

This program on Japanese Literature aims to nurture and produce doctoral students who will take over, and develop the study of Japanese literature with the academic community of Japanese literature (domestic literature) as the main stakeholder. To this end, this program fosters individuals who can contribute to research in this field, and make unique contributions to society by tackling the issues that include using original ideas from peripheral fields and interdisciplinary perspectives, based on a comprehensive expertise in the core discipline of Japanese literature.

Graduate Program Students (as of April 2023)

Quota	1st year	2nd year	3rd year	Total
2	2	1	4	7

Degree Recipients of Past 5 Years

FY2018	FY2019	FY2020	FY2021	FY2022
2	0	2	3	2

*includes the number of those who were Ph. D. by way of Dissertation

Careers of Degree Recipients

Aoyama Gakuin University Human Innovation Research Center, Kanazawa University, Keio University, Korea University, National Institute of Japanese Literature, Sichuan International Studies University, Shohoku College, Tsuru University, Tokyo Kasei University Junior and Senior High School, Japan Society for the Promotion of Science, Hyogo University of Teacher Education, Morioka University, Waseda University, Soiku Co., Ltd., and others.



*Due to a reorganization, from April 2023, Department of Japanese Literature within the School of Cultural and Social Studies has been renamed Japanese Literature Program, Graduate Institute for Advanced Studies.

Advantages of Japanese Literature Program

Guidance by Multiple Supervisors

Students are supported by about 20 expert supervisors representing experience in a wide variety of educational and research fields. To provide a system of supervision responsive to the needs of individual student research projects, one main supervisor and two supporting supervisors are chosen for each student to supply finely customized guidance that draws on multiple perspectives.

An Environment Conducive to Education and Research

In conducting their research, students will have available to the massive collection of materials housed at NIJL. Graduate students may also avail abundant study facilities including graduate students' rooms, lecture rooms, graduate library studies, and common rooms.

Financial Support

A comprehensive range of financial support is available, including support for travel expenses incurred in research activities such as on-site archival research domestically and overseas, as well as in attendance or presentation at scholarly conferences. Support is also provided through the active hiring of students as research assistants. Furthermore, photocopying of materials within NIJL is free (up to a certain limit). The institute can also purchase books to make available in the library upon request.



Reference Data

Staff, Budget, and Facilities (FY 2023)

Staff	(Unit: persons)	Budget	(Unit: 1,000 Yen)	Facilities	(Unit: m ²)
Director General	1	Income	1,293,501	Total floor area	13,002
Professor	11	Administrative cost subsidies	1,289,522	This includes :	
Associate Professor	10	Non-subsidized income	3,979	Reading room	1,584
Assistant Professor	3	Expenses	1,293,501	Stack room / storage	2,416
Specially appointed Professor	1	Education and research cost	720,370	Exhibition room	355
Specially-appointed Associate Professor	2	Administrative overhead	573,131		
Specially-appointed Assistant Professor	2				
Administrative Staff	44				
Total	74				

Grants-in-Aid for Scientific Research < KAKENHI > (FY 2023)

Research Categories	Review Classification	Principal Investigator	Research Project Title	Research period
Grant-in-Aid for Scientific Research (A)	General	KATO Kiyofumi	Development of new foundation for the sustainable society and regional regeneration by Archives	2019–2023
Grant-in-Aid for Scientific Research (A)	General	IRIGUCHI Atsushi	Integrated research on text formation for a data-driven approach to Japanese literature and related fields	2022–2026
Grant-in-Aid for Scientific Research (B)	General	UNNO Keisuke	A Study on the Circulation of Religious Knowledge and the Formation of Archive on Buddhism in Medieval Japan through the Survey of the Mani-in of Kongo-ji Temple	2019–2023
Grant-in-Aid for Scientific Research (B)	General	SAITO Maori	Comprehensive research on the reception and development of Ming period publishing culture in Japanese medieval and early modern painting topics	2020–2023
Grant-in-Aid for Scientific Research (B)	General	FUJIZANE Kumiko	Promoting academic research and open science related to wood-block prints during the period of Meiji Restoration	2020–2023
Grant-in-Aid for Scientific Research (B)	General	SAITO Maori	A Comprehensive Study of the Representation and Development of Literature and Art in the Middle Modern Period from the Perspective of the Receptive Circle for the Generation of Painting Titles, Theories of Painting, and Powder Books	2023–2026
Grant-in-Aid for Scientific Research (C)	General	YAMASHITA Noriko	Study of Middle-Early Modern Arts and Sciences in Tsuruya Nanboku Kabuki	2020–2024
Grant-in-Aid for Scientific Research (C)	General	KIGOSHI Shunsuke	The restructuring and reception of 19th-century style “knowledge” as observed in local gazetteers and in stories of the fantastic	2020–2023
Grant-in-Aid for Scientific Research (C)	General	KOBAYASHI Kenji	A survey of and research on pictorial materials based on Noh and kyōgen of the early to mid-Edo period	2020–2023
Grant-in-Aid for Scientific Research (C)	General	DAVIN Didier	Works related to the early Daito Kokushi School	2021–2023
Grant-in-Aid for Scientific Research (C)	General	OKAZAKI Makiko	Comprehensive Research on the Generation and Development of Poem Titles from the Late Heian Period to the Muromachi Period	2022–2025
Grant-in-Aid for Scientific Research (C)	General	TADA Kurahito	Historical Research on Interrelations Between Japanese Modern Literature and Historical Concepts of Literary Style	2023–2025
Grant-in-Aid for Scientific Research (C)	General	NAKANISHI Satoko	Research on the Lengthening of the <i>Genji monogatari</i> within the household of Fujiwara no Michinaga	2023–2026
Grant-in-Aid for Challenging Research (Pioneering)		WATANABE Koichi	Examining nationwide surveys of regional archives during the social transition periods and developing new methods	2020–2023
Grant-in-Aid for Early-Career Scientists		KIKUCHI Nobuhiko	Digital Historical Research on Publishing and Reading Nationalisms in Spain	2019–2023
Grant-in-Aid for Early-Career Scientists		KUME Shiori	Fundamental research on the narrative of Hoganmono: Elucidation of the influence of kowakamai, sekkyo and kojoruri	2019–2023
Grant-in-Aid for Early-Career Scientists		KNOTT Jeffrey	Basic Research on the History of Classical Studies in the Warring-States Period: The <i>Genji</i> Studies of Renga Masters in Particular	2021–2025
Grant-in-Aid for Early-Career Scientists		YAMAMOTO Yoshitaka	Sinitic Prose Composition by Ito Togai	2022–2026
Grant-in-Aid for Early-Career Scientists		MATSUNAGA Ryusei	Research on the Locations and Holdings of Kashihonya Lending Libraries in Modern Japan	2023–2026
Grant-in-Aid for Early-Career Scientists		KUME Shiori	Basic Research on the Reception of Kowakabukkyoku and Samurai Culture in the Transition from the Medieval to Early Modern Periods	2023–2027
Grant-in-Aid for Early-Career Scientists		IKUURA Hiroyuki	Comprehensive Study on Monthly News Letter Attached Collections and Public Relations Magazines of Classical Japanese Literature in Japan Since 1868	2023–2025
Grant-in-Aid for Early-Career Scientists		LEE Taekjin	Comprehensive Literary–Historical Research on the Reception of Aesop’s Fables in Japan	2023–2025
Grant-in-Aid for Research Activity Start-up		TAKAGI Madoka	Studies on prostitution in the medieval/early modern transition period based on sexually transmitted infection information in medical texts and diaries	2020–2023
Fund for the Promotion of Joint International Research (Fostering Joint International Research (B))		KATO Kiyofumi	The Russo–Japanese joint research to construct the archival system of Soviet–Japanese War	2018–2023
Fund for the Promotion of Joint International Research (Fostering Joint International Research (B))		KANSABU Ken’ichi	Survey Research on UCB Mitsui Bunko and the Building of International Research Perspectives, from its Use and Application	2022–2025
Grant-in-Aid for Publication of Scientific Research Results (Databases)		UNNO Keisuke	Union Catalogue Database of Japanese Texts	2020–2024
Grant-in-Aid for Publication of Scientific Research Results (Databases)		YAMAMOTO Kazuaki	Database of Pre-Modern Japanese Works	2023–2024

(as of April 1, 2023)

A List of Major Publications

Publications Introducing NIJL

- Overview of the National Institute of Japanese Literature
- NIJL News (issued twice a year) (online only)
- Fumi



NIJL News



Fumi

Publications Presenting Research Results

- Bulletin of the National Institute of Japanese Literature (online only)
 - Studies in Japanese Literature Series
 - Archive Studies Series
- Reports on the Results of Collaborative Research Projects



Bulletin of the National Institute of Japanese Literature: Studies in Japanese Literature Series



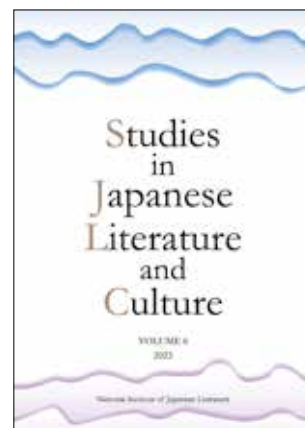
Reports on the Results of Collaborative Research Projects
Basic Research on the NIJL Saizō Kidō Collection

Project-related Publications

- Report on Surveys and Research (online only)
- Catalogue of Historical Documents (online only)
- Exhibition Catalogs
- Studies in Japanese Literature and Culture (online only)



Illustrated Exhibition Catalogue:
“Special 50th Anniversary
Exhibition: My Favorite Text at
National Institute of Japanese
Literature”



Studies in Japanese
Literature and Culture

National Institutes for the Humanities (NIHU)

The National Institutes for the Humanities (NIHU) was established in 2004 as a corporation to support and further develop inter-university research institutes* that promote research in the humanities.

NIHU's six institutes

- National Museum of Japanese History (REKIHAKU)
- National Institute of Japanese Literature (NIJL)
- National Institute for Japanese Language and Linguistics (NINJAL)
- International Research Center for Japanese Studies (NICHIBUNKEN)
- Research Institute for Humanity and Nature (RIHN)
- National Museum of Ethnology (MINPAKU)



As international centers of excellence in their respective research fields, these institutes promote fundamental and interdisciplinary research in collaboration with domestic and international universities and other research institutes and researchers.

In addition, these institutes offer courses at the Graduate University for Advanced Studies (SOKENDAI). The six graduate (doctoral) courses are designed to take advantage of the institutes' resources and provide an array of specialized training for researchers.

The NIHU Headquarters houses the Center for Innovative Research (CIR), which conducts research and projects that link multiple institutes and universities, and promotes joint research using a research infrastructure built on digital technology.

* Inter-University Research Institutes

As Japanese Centers of Excellence (COE) in their respective research fields, these institutes provide universities and other research institutes in Japan and overseas with large facilities and equipment as well as vast materials and information that are difficult for any individual university to maintain, thereby facilitating effective joint research.

NIHU's Mission

As the only inter-university research institute corporation for the humanities, NIHU's mission is to comprehensively explore humanity and its cultures, and through this exploration, to ask what true abundance is, to promote harmony between nature and humanity, and to contribute to the survival and coexistence of humankind.

NIHU's Vision

To realize its mission, in the NIHU's Fourth Mid-term Plan Period (FY2022-2027), NIHU aims to explore various social issues related to the diversity of human culture and social dynamics, try to solve them, and present new values and humanities knowledge that will serve as guidelines for the formation of a future society in which people and nature live in harmony and where science, technology, and humanity coexist. To achieve this, the Center for Innovative Research was established within the NIHU headquarters with the aim of forming new knowledge open to society. Based on the philosophy of open humanities research through co-creation with various people in Japan and overseas, the center will build a research platform using digital technology, promote joint research through that platform, and work on the formation of a "Knowledge Forum" as a place for exchange and collaboration with various people in society and the formation of an international network.

Center for Innovative Research (CIR)

CIR promotes “NIHU Research Projects” and “NIHU Co-creation Initiatives.”

NIHU Research Projects

As basic and interdisciplinary research on the humanities, which forms the core of NIHU, eleven research projects in three types will be implemented, leading to an expansion of academic networks and the creation of new fields to strengthen functions for fulfilling our mission as an inter-university research institute.

Institute-based Projects NIHU's six institutes have established priority research themes in accordance with their respective missions.	Construction of Japanese Historical Knowledge and Open Science Research
	Model Building in the Humanities through Data-Driven Problem Solving
	Empirical and Applied Research on the Japanese Language Based on Open Language Resources
	New Departures and Consortium for Global Japanese Studies: Pioneering and Cultivating Global Japanese Studies
	Renewing Modern Civilization through Nature-culture Complex toward Solving Global Environmental Problems
	Sustainable Development Humanities Research Based on the Info-Forum Archives of Human Culture
Multidisciplinary Collaborative Projects These are projects in which NIHU's institutes take on a central role while collaborating with other NIHU's institutes as well as universities and other external institutes, working with research themes that cut across different fields.	Interdisciplinary and Integrated Studies on Local Cultures: Aiming for the Emergence of Novel Communities
	Object-based Research of Nature-human Interactions up to the Anthropocene
	Expansion Studies of Synthetic Bibliology
Network-based Projects These are projects in which NIHU's institutes play a central role in forming a network with universities and other research institutes in Japan and overseas as well as implementing issues that are important to Japan and the world.	NIHU Global Area Studies
	Inter-University Research Institute Network Project to Preserve and Succeed Historical and Cultural Resources

NIHU Co-creation Initiatives

These are projects that promote the sharing of research results and co-creation with local communities and societies, promote **Co-creation research projects** and **Co-creation outreach**, whose aim is to develop research in three ways: “social co-creation,” “digitalization,” and “international co-creation.”

Co-creation Research Projects

These projects promote joint research through co-creation with various organizations and people within and without NIHU as well as develop research in three ways.

- Establishing Science for Universal Communication (S_COM) [social co-creation]
- Building Digital Library for Humanities [digitalization]
- Japan-related Documents and Artifacts Held Overseas: [international co-creation]
 - Early Diplomatic Japanese Collections Abroad: Contextualizing 19th Century Japanese Material Heritage in World History through On-site and Online Research and Use
 - Study on the Construction of Archival Infrastructure for the History of Modern Japan-Vatican Relations
 - Japan-related documents and artifacts in Hawai'i: historical and social survey interface

Co-creation Outreach

These initiatives implement projects to accelerate the three types of research development as well as aim to enhance and innovate research at NIHU's institutes and universities and other external institutes.

- NIHU Knowledge Co-creation Projects [social co-creation]
- NIHU "Digital Humanities" (DH) Projects [digitalization]
- NIHU Global Partnership [international co-creation]

nihuBridge

This is a portal site for sharing and utilizing diverse research resources disseminated by the NIHU and associated institutes.





Saigashokuninburui
 Compiler Rashakutsu Kikyu
 Painter Gyokuzuken Tachibana Minkou

Directions

By Tama Intercity Monorail:

Get off at JR Tachikawa Station, make switch to Tama Monorail Tachikawa-Kita Station, get off at Takamatsu Station, and walk 10 minutes.

By Tachikawa bus:

From JR Tachikawa Station's north entrance, board bus at boarding area ②, get off at "Tachikawa Gakujutsu Plaza," and walk 1 minutes.

From JR Tachikawa Station's north entrance, board bus at boarding area ①, get off at "Tachikawa Shiyakusho," and walk 3 minutes.

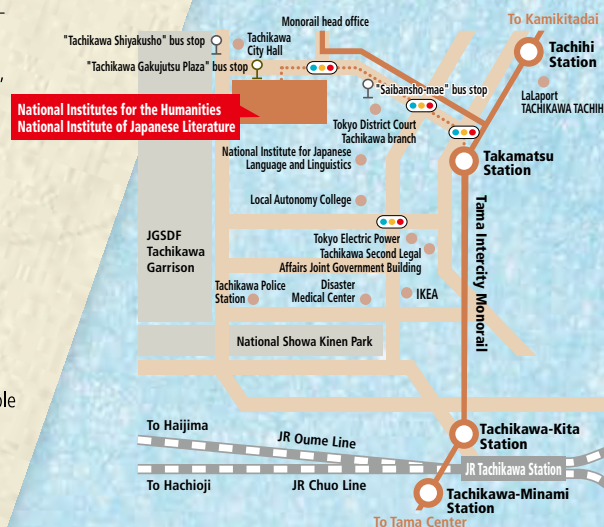
From JR Tachikawa Station's north entrance, board bus at boarding area ②, get off at "Saibansho-mae," and walk 5 minutes.

On foot:


From JR Tachikawa Station, walk about 25 minutes.

By car:

From Chuo Expressway's "Kunitachi Fuchu IC," drive about 15 minutes. *Free parking available



大学共同利用機関法人 人間文化研究機構

 **国文学研究資料館**

10-3 Midori-cho, Tachikawa, Tokyo

TEL: 050-5533-2900

FAX: 042-526-8604

<https://www.nijl.ac.jp/>

National Institute of Japanese Literature (NIJL)
National Institutes for the Humanities

Address: 10-3 Midori-cho, Tachikawa city, TOKYO 190-0014, Japan

TEL: +81-50-5533-2900

FAX: +81-42-526-8604