



Saigashokuninburui



## Contents

A Message from the Director-General : Dr.WATANABE Yasuaki	3
Overview	4
Collaborative Research	6
Model Building in the Humanities through Data-driven Problem-solving	8
Union Catalog Database of Japanese Texts	14
Activities Overview	16
Publicly Available Databases	23
Researchers	24
Support for Young Researchers	26
Graduate Education	27
Reference Data	28
National Institutes for Humanities	30

# A Message from the Director-General : Dr. WATANABE Yasuaki

Welcome to the National Institute of Japanese Literature (NIJL).

The institute was founded in 1972, making this the 52nd year since its establishment. This means that after the passage of over half a century, we are entering another new year of contributions to research in Japanese literature and other related fields. After a preparatory period, the NIJL began its library services in July 1977. Reflecting upon my own memories, only a year earlier, I had enrolled in my university's Department of Japanese Literature and made my first visit to the institute, then located in Togoshi (Shinagawa-ku, Tokyo), on the advice of a senior. I remember my surprise at how easy it was to peruse—and even request copies of—texts and documents that I had only been able to access with great difficulty in the past. In the 40-odd years since, the range of materials offered by NIJL has dramatically expanded and the quality of its services has remarkably improved. In particular, the extensiveness of the institute's databases is nothing short of astounding. Currently, the COVID-19 pandemic is threatening our very lives; it has placed significant constraints on our ability to research and access documents. Thus, it seems to me that the importance of such databases is a fact that is universally recognized now.



© えくてびあん

One of these databases, the Union Catalogue Database of Japanese Texts, has been created through the "Project to Build an International Collaborative Research Network for Premodern Japanese Texts" (NIJL-NW Project), which we started working on in 2014. The creation of image data, which is being conducted also as a part of the NIJL-NW Project in cooperation with domestic and overseas research institutions, has also reached its goal of 300,000 items. In addition, the "Model Building in the Humanities through Data-driven Problem-solving" project, the successor to the NIJL-NW Project, has been launched in FY2024. Going forward, we intend to chart a path how to effectively utilize these massive quantities of accumulated data. With such a goal in mind, we are planning on further promotion of collaborative research, across the domestic and international network of researchers and involving various different fields including natural sciences. These are all part of our mission as Inter-University Research Institute. Also, collaboration with citizens is an important part of how we contribute to society.

No matter the type of information, it is us humans who use it, and also us humans who digest it, and make of it nourishment for our own intellect. As such, it holds no meaning to have treasures that are left unused.

At present, many people are seriously asking what the humanities are good for. This is precisely why I believe our words and actions are necessary. For it is the classics that teach us how to keep our heads above water in a sea of information, and show us the way forward amidst diverse values. Discovering previously unknown texts and documents from the past, bringing them back to life in the present by making them accessible in a manner that anyone can comprehend, and making them public so that their value can be shared. In this way, we endeavor to demonstrate the road toward the formation of empathy, through which we hope to contribute to contemporary society which, on one hand is threatened by division and conflict, and on the other, calls for greater respect for diversity. For this, we are aware that the mission entrusted to us has garnered greater significance than ever before.

# Overview

## The Goals of NIJL

This institute strives to serve researchers in various fields, including Japanese literature by collecting a massive archive of materials related to Japanese literature from various regions within Japan. NIJL is a comprehensive research institute and functions as a foundation for the broader promotion of advanced collaborative research into Japanese literature. With a history of 50 years since its establishment, we have accumulated a wealth of research on premodern Japanese texts. Our mission is to utilize premodern Japanese texts as a rich intellectual resource through collaborates with domestic and international research institutions and scholars, and to create interdisciplinary research.

## A Brief Chronology of NIJL

1966 December	The Science Council of Japan advises the Japanese government to establish a "Center for Research on Japanese Language and Literature" (provisional title).
1970 September	The Council for Science and Technology reports to the Minister of Education on its emergency establishment of a "Center for Research on Japanese Literature" (provisional title).
1971 April	Funding is allocated to the Ministry of Science, Education and Culture for investigations regarding the provision of a facility to house archival materials for Japanese literary study.
1972 May	The National Institute of Japanese Literature (official name) is established, consisting of a management division, a documents and materials division, and a research and information division.
1977 June	Inaugural ceremony is held.
1977 July	Library services commence.
1979 April	Library services division established.
1987 April	Online search services set up for the database of NIJL's Microfilm Materials catalog and Premodern Japanese Manuscripts catalog.
1992 April	Online search services made available for the catalog of research articles on Japanese Literature.
2002 November	Ceremony held in commemoration of NIJL's 30th anniversary.
2003 April	Department of Japanese Literature is established in the School of Cultural and Social Studies within the Graduate University for Advanced Studies as a foundational institution for research.
2004 April	Internal reorganization at NIJL after the incorporation of its parent institution, which is hereafter named the Institute for the Humanities of the Inter-University Research Institute Corporation.
2008 March	NIJL is moved to its current location in Midori-cho, Tachikawa city.
2013 April	The Center for a Premodern Japanese Texts Database is established.
2014 April	The Center for a Premodern Japanese Texts Database is renamed as the Center for Collaborative Research on Premodern Japanese Texts. The Large-Scale Academic Frontiers Project "Project to Build an International Collaborative Research Network for Pre-Modern Japanese Texts" is started.
2019 February	Founding of the Tama Academic and Cultural Platform "Plat NIJL."
2020 November	The Global Consortium for Japanese Textual Scholarship is established.
2022 April	The Center for Data-Driven Research on Premodern Japanese Texts is established.
2022 May	Ceremony held in commemoration of NIJL's 50th anniversary.
2024 April	The Large-Scale Academic Frontiers Project "Model Building in the Humanities through Data-driven Problem-solving" is started. The Project Promotion Office and the Core Data Center are established, and the Information Research Center is reorganized into the Core Research Center.

## About the Facility

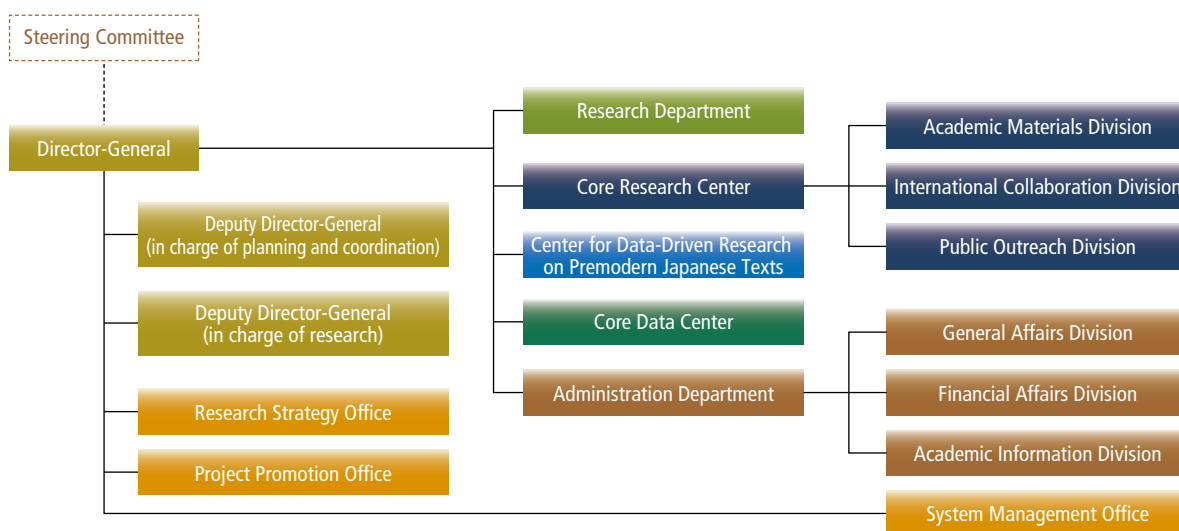
In August 1989 and again in June 1993, governmental meetings were held to discuss a proposal on relocating a number of national institutions to reduce the overcrowding and the overconcentration of national resources in the center of Tokyo's metropolitan area. It was in accordance with decisions reached during these meetings that NIJL was moved in March 2008, from Shinagawa Ward to Tachikawa city, outside the central metropolitan area.

The facility was designed to be fully accessible, with visitor convenience in mind.

The reading and exhibition rooms are open to visitors. The reading room provides open access to all reference books and a relaxed, spacious atmosphere for reading. The exhibition room holds regular exhibits of premodern texts from NIJL's collection.



## Organization



## Steering Committee

### Non-NIJL Members

ANDO Hiroshi	Vissiting Professor, The Open University of Japan
KAWAHIRA Toshifumi	Professor, Faculty of Humanities, Kyushu University
KUFUKIHARA Rei	Professor Emeritus, Aichi Prefectural University
KURAKAZU Masae	Professor, College of Bioresource Sciences, Nihon University
SATO Yukiko	Professor, Graduate School of Humanities and Sociology, The University of Tokyo
SUZUKI Jun	Professor, Graduate School of Humanities and Sociology, The University of Tokyo
TABUCHI Kumiko	Professor, Faculty of Education and Integrated Arts and Sciences, Waseda University
Zhang Longmei	Professor, Beijing Center for Japanese Studies, Beijing Foreign Studies University
TOYAMA Atsuko	Director, Mt. Fuji World Heritage Centre, Shizuoka
Robert Huey	Professor Emeritus, University of Hawai'i at Mānoa
YAGI Toshiro	Chairman, The Tama Shinkin Bank
YAMAJI Kazutsuna	Professor, Digital Content and Media Sciences Research Division, National Institute of Informatics
YAMAMOTO Satomi	Specially appointed Professor, Faculty of Letters, Arts and Sciences, Waseda University

### NIJL Members

IRIGUCHI Atsushi	Deputy Director-General (Planning and Coordination)
OKAZAKI Makiko	Professor, Research Department (Director)
OYAMA Keizo	Specially appointed Professor (Director)
KIGOSHI Shunsuke	Professor, Research Department (Director)
KANSAKU Ken'ichi	Deputy Director-General (Research)
SAITO Maori	Professor, Research Department
NISHIMURA Shintaro	Professor, Research Department (Director)
FUJIZANE Kumiko	Professor, Research Department (Director)
YAMAMOTO Kazuaki	Professor, Research Department (Director)

## Executive Staff

Director-General	WATANABE Yasuaki
Deputy Director-General (in charge of Planning and Coordination)	IRIGUCHI Atsushi
Deputy Director-General (in charge of Research)	KANSAKU Ken'ichi

### Research Department

Head of Researcher	OKAZAKI Makiko
Head of Researcher	KIGOSHI Shunsuke
Head of Researcher	NISHIMURA Shintaro
Head of Researcher	FUJIZANE Kumiko
Head of Researcher	YAMAMOTO Kazuaki

### Core Research Center

Director (dual post)	IRIGUCHI Atsushi
Director of Academic Materials Division (dual post)	OKAZAKI Makiko
Director of International Collaboration Division (dual post)	FUJIZANE Kumiko
Director of Public Outreach Division (dual post)	NISHIMURA Shintaro

### Center for Data-Driven Research on Premodern Japanese Texts

Director (dual post)	OYAMA Keizo
----------------------	-------------

### Core Data Center

Director (dual post)	YAMAMOTO Kazuaki
----------------------	------------------

### System Management Office

Director (dual post)	OKAZAKI Makiko
----------------------	----------------

### Graduate Institute for Advanced Studies, SOKENDAI

Chair of Japanese Literature	SAITO Maori
------------------------------	-------------

### Administration Department

Director	AKIBA Tadatsugu
Manager of General Affairs Division	KASAHARA Masahiro
Manager of Financial Affairs Division	HIMENO Miyuki
Manager of Academic Information Division	KATAOKA Shin

# Collaborative Research

NIJL has accumulated massive quantities of materials (e.g. premodern texts, digital data, microfilms, and printed photographs) on Japanese literature and related fields while conducting over 50 years of surveying and collecting projects and through the Large-Scale Academic Frontiers Project “Project to Build an International Collaborative Research Network for Pre-Modern Japanese Texts” (FY2014-FY2023). NIJL is engaged in the following collaborative research projects using these materials as main research resources to promote and develop diverse studies of Japanese literature further.

Collaborative research is indispensable to fulfill our mission as an inter-university research institute. Thus, we set up a collaborative research committee, involving 13 committee members (7 specialists from outside and 6 in-house faculty staff) to determine application guidelines, select projects, and manage progress of projects.

In the fourth mid-term (FY2022 -FY2027), we have established the total of seven collaborative research projects in three new research areas (“modern,” “regional materials,” and “international”) in the special research projects section while systematically setting topics for basic research on our collections in the “project” area to expand and enrich our research activities.

In the course of developing any collaborative research project, regardless of whether selected through a public application process or an internal selection process, we carefully assess the ratio of young scholars and give consideration to fostering researchers of the next generation. Whenever a collaborative research project is led by a researcher from outside, we assign an in-house faculty member to ensure that the project proceeds smoothly.

Note: Public applications close in the fall of each year; decisions are announced at the end of the year.

## Core Research Projects

Core research projects are collaborative research that serves as fundamental research on Japanese literature and the related fields. All projects are to be led by our faculty members as a main researcher, and we select other project members.

- **Basic Research on Rare Books in the NIJL Collections** (2022–2027)  
Main Researcher: SAITO Maori (Professor at NIJL)  
NAKANISHI Satoko (Associate Professor at NIJL)
- **Fundamental Research on the emergence of the foundations of society permeated with archival awareness** (2022–2027)  
Main Researcher: OTA Naohiro (Associate Professor at NIJL)
- **Comprehensive Research on Regional Cultural Centers in the 19th Century: Literary Activities and Networks of the Hirose Family** (2024–2027)  
Main Researcher: IRIGUCHI Atsushi (Professor at NIJL)

## Special Research Projects

Special research projects are collaborative research addresses specific research subject.

### General

These projects are collaborative research promoted using various materials (premodern Japanese texts, digital data, microfilms, paper-printed photographs, etc.) accumulated by NIJL as the main research resources. All projects are selected through a public application process.

- **A Study on The Development of *Wakan* Comparative Literature: The Interaction with Textual Criticism in Postwar Japan**  
Main Researcher: SASAGAWA Isao, Adjunct Lecturer at Kokugakuin University (2022–2024)
- **Comprehensive Research on Man'yōshū Manuscripts with Hiragana Interlinear Glosses**  
Main Researcher: SHINZAWA Noriko, Professor at Tsurumi University (2023–2025)
- **Regional Collaborative Research on the Early Modern Period Noble-Military Cultural Sphere Centered on the Tamura Family of the Ichinoseki Domain**  
Main Researcher: OYAMA Kazuya, assistant professor at Doshisha University (2024–2026)

## Project

These are collaborative research projects conducted on our specific collection (including the ones that loaned to us) and one of the research outcomes is creation, display, and publication of bibliographical introduction of related documents. The project is composed of researchers (applicants) who will conduct an individual research project as a project member, and each of them will also aim to acquire various knowledge through exchanges at the research meetings. (The main researcher is to be selected by the project members at the first meeting.)

All projects are selected through a public application process.

- **Basic Research on the NIJL MATSUNO Yoichi Collection** (2022–2024)  
Main Researcher: TATENO Fumiaki, Associate Professor at Saitama University
- **Basic Research on the NIJL USUDA Jingoro Collection** (2023–2025)  
Main Researcher: KUBOKI Hideo, Professor at Nihon University
- **Basic Research on the NIJL Ex-KITANO Tayuru Collection of Paintings and Calligraphy** (2024–2026)  
Main Researcher: GOYAMA Rintaro, Professor at Keio University

## Modern Literature

This is a collaborative research project on modern Japanese literature. Our faculty member leads a project as a main researcher, and we select other project members.

- **The Relation Between Literary Exempla, Writing, and Readers in Modern Japanese Literature** (2022–2024)  
Main Researcher: TADA Kurahito, Associate Professor at NIJL

## Regional Material

These are collaborative research projects in which each main researcher, who is an expert in and has in-depth knowledge of one of the five collections selected from among libraries and collections across the country where we have performed surveying and collecting, leads the project. The project members are mainly members of the regional material specialist committee (formerly known as “Japanese literature literature material investigators”) who have been responsible for the surveying and collecting project at each region.

It is required to hold a seminar in each fiscal year on the collection that was used by the project for its research material in order to share the importance of research resources with people in each region.

- **Research on the Tohoku University Kano Collection** (2022–2024)  
Main Researcher: SAKURA Yoshiyasu, Professor at Tohoku University
- **Research on Classical Documents Handed Down from Kamo Shrine Including Classical Documents in the Yamamoto Family on Loan from the Kyoto City Library of Historical Documents** (2022–2024)  
Main Researcher: KOBAYASHI Kazuhiko, Professor at Kyoto Sangyo University
- **Research on the Soai University Syunsyo Collection: Books and people** (2022–2024)  
Main Researcher: CHIBA Shinya, Professor at Soai University
- **Research on the Masamune Collection** (2022–2024)  
Main Researcher: KAWASAKI Tsuyoshi, Professor at Shujitsu University
- **Comprehensive Research on the Nakagawa Collection (Yutoku Inari Shrine)** (2022–2024)  
Main Researcher: MURAKAMI Yoshiaki, Associate Professor at Kumamoto Gakuen University

## International

This is an international collaborative research project promoted based on research and study of overseas premodern Japanese texts. Our faculty member leads a project as a main researcher, and we select other project members. (The participation ratio of overseas researchers in each project is assessed.)

- **Research on Premodern Japanese Works in University of Hawaii of Manoa and Honolulu Museum of Art** (2022–2024)  
Main Researcher: KANSAKU Ken'ichi, Professor at NIJL



# Model Building in the Humanities through Data-driven Problem-solving

As a successor project to the "Project to Build an International Collaborative Research Network for Pre-Modern Japanese Texts (NIJL-NW Project)", which was implemented for 10 years from FY2014 to FY2023 as a Large-Scale Academic Frontiers Project by the Ministry of Education, Culture, Sports, Science and Technology (MEXT), the "Model Building in the Humanities through Data-driven Problem-solving" is being implemented as a 10-year project from FY2024 to FY2033.

In this project, we will establish a data infrastructure centered on Japanese literature by further expanding the collection of image data through collaboration with domestic and overseas institutions, converting image data into text data through the use of AI and other means, and promoting the development of data analysis technologies. We aim to pioneer next-generation humanities research utilizing large-scale data in collaboration with domestic and international researchers from different fields based on an awareness of various issues.

## Overview of the Plan

### 4 research areas involved in Humanities through Data-driven Problem-solving

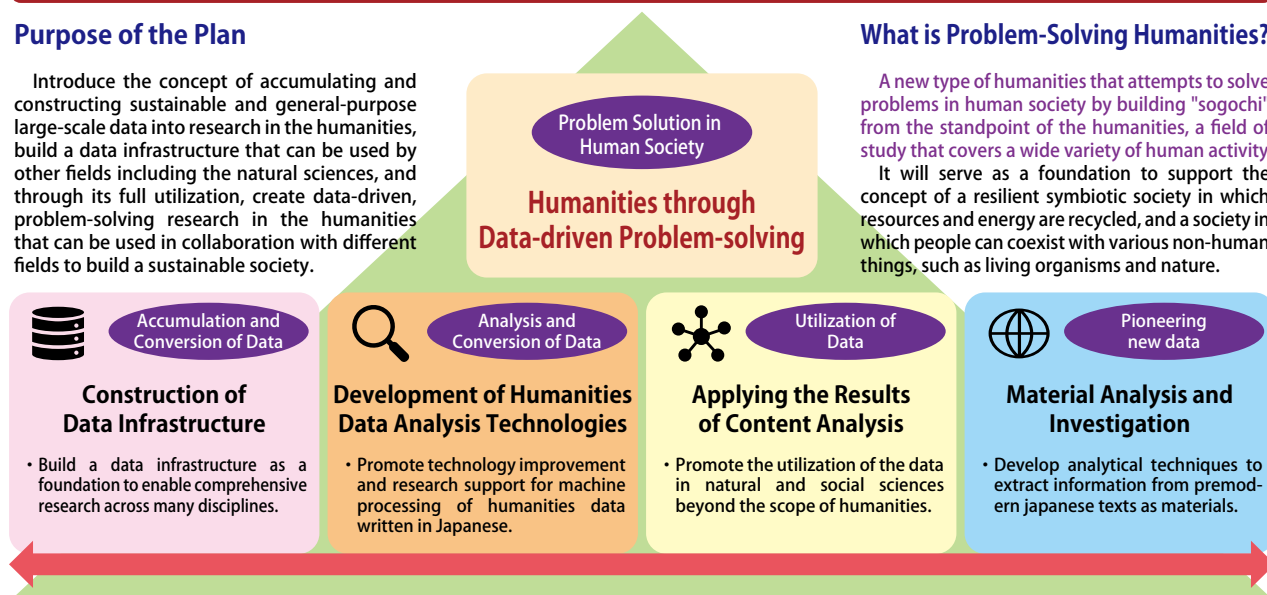
#### Purpose of the Plan

Introduce the concept of accumulating and constructing sustainable and general-purpose large-scale data into research in the humanities, build a data infrastructure that can be used by other fields including the natural sciences, and through its full utilization, create data-driven, problem-solving research in the humanities that can be used in collaboration with different fields to build a sustainable society.

#### What is Problem-Solving Humanities?

A new type of humanities that attempts to solve problems in human society by building "sogochi" from the standpoint of the humanities, a field of study that covers a wide variety of human activity.

It will serve as a foundation to support the concept of a resilient symbiotic society in which resources and energy are recycled, and a society in which people can coexist with various non-human things, such as living organisms and nature.



## What is the Large-Scale Academic Frontiers Project?

This is a large-scale project promoted by the Ministry of Education, Culture, Sports, Science and Technology (MEXT) that brings together cutting-edge technology and knowledge to tackle research issues that have never been attempted before by mankind and achieve groundbreaking results that will lead academic research worldwide.

The project is being promoted based on the "Road Map," a basic concept for the promotion of large-scale projects formulated in consideration of the wishes of the broad research field communities.



## The Significance of a Data-driven Approach to Japanese Historical Documents —

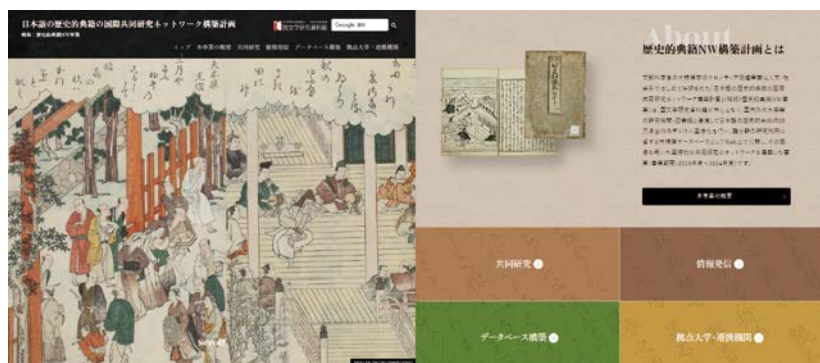
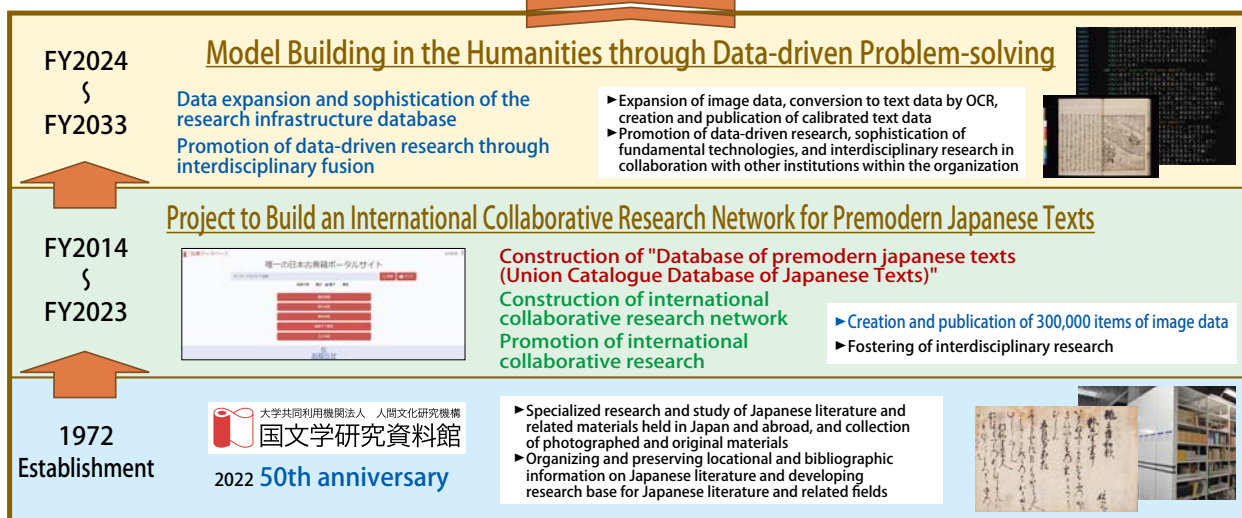
The oldest surviving Japanese historical work is the Kojiki, which dates back to 1,300 years. This continuity, with the existence of a written tradition stretching back over 1,000 years within a single country, is a notable phenomenon even when considered on a global scale. The historical data found in texts produced over such a vast span of time includes various records concerned with the constitution of human society—ranging from memories of climate change and environmental history (including natural disasters) to wisdom on multicultural coexistence, records of how troubles of the human heart were faced, and solutions where society could recover after suffering from a crisis.

Owing, however, to the particular properties of Japanese washi paper as a medium, these texts have had to be preserved in libraries and research institutions, with only very limited opportunities to be examined by anyone but field specialists, making any comprehensive use and analysis of the information they contain an arduous task.

This is the background to the foundation of the NIJL-NW Project for premodern Japanese texts, which aimed to build an environment in which the enormous amount of accumulated information in such texts, previously mostly hidden from view, was made available—as data—for swift access at need, and not only to scholars in other fields but to anyone at all, in Japan or abroad. Through our institute's NIJL-NW Project, an environment permitting anyone with an internet connection to freely access the complete image data of as many as 300,000 premodern Japanese texts is currently in the process of taking shape.

Our new project, building upon this structure 300,000-items strong, plans to further expand the coverage of its data accumulation to the Meiji period. By linking up with the bibliographic data already released by the National Diet Library spanning this earlier part of the modern period, we will be able to offer diachronic data spanning over 1,000 years, which we are processing to make machine-readable and ready for use by scholars in other fields, such as in the natural and social sciences. We aim, moreover, to make the results of collaborative research projects between humanities scholars and scholars in other fields likewise available as data, through a framework we plan to build that will encourage the circulation of such research results.

**The classics tell us where to turn and where to go in the face of diverse values**  
**Opening up Japan's memories and experiences over the past 1,000 years to the world**  
**Furthermore, provide data that can be deciphered and appreciated by anyone**



The results of the "NIJL-NW Project" can be viewed on the archive website.  
<https://www.nijl.ac.jp/pages/cijproject/>



# Overview of the Project Plan

The outline of the project plan is as follows.

## Data expansion and sophistication of the research infrastructure database

The scope of image data accumulation will be expanded to include the early modern era (early Meiji era), and large-scale machine-readable text data will be formulated.

- Expansion of image data

Through the NIJL-NW Project, we have achieved full digitization of 300,000 volumes of premodern Japanese texts and made them available as open data in the Union Catalogue Database of Japanese Texts, which can be used free of charge by anyone, anytime on the web. In this project, an addition of full digitization of 150,000 volumes of premodern Japanese texts will be created, to comprise a total of 450,000 volumes of premodern Japanese texts.

- Creation of text data

OCR is used to create machine-readable text data based on the image data of 300,000 volumes of premodern Japanese texts published in the Union Catalogue Database of Japanese Texts. This will allow us to use the data in online search and display systems as well as for the creation of machine learning models. We also provide more reliable texts with minimal markup according to TEI guidelines, and for some texts, through proofreading by researchers and existing reprinted materials.

## Promotion of data-driven research through interdisciplinary fusion

Data-driven research in collaboration with informatics, natural sciences and other fields and sophistication of fundamental technologies are promoted through the following four research plans.

- Construction of Data Infrastructure
- Development of Humanities Data Analysis Technologies
- Applying the Results of Content Analysis
- Material Analysis and Investigation

Also, we are conducting interdisciplinary research with domestic and international researchers based on the awareness of various issues using large-scale data, taking advantage of the economies of scale of the organization, in collaboration with other organizations within the National Institutes for the Humanities, which act as the hub for various humanities fields.



"Expansion Studies of Synthetic Bibliology," Multidisciplinary Collaborative Projects led by us in cooperation with the National Museum of Japanese History, National Institute for Japanese Language and Linguistics, and other research institutions outside of the organization such as universities

# Interdisciplinary research

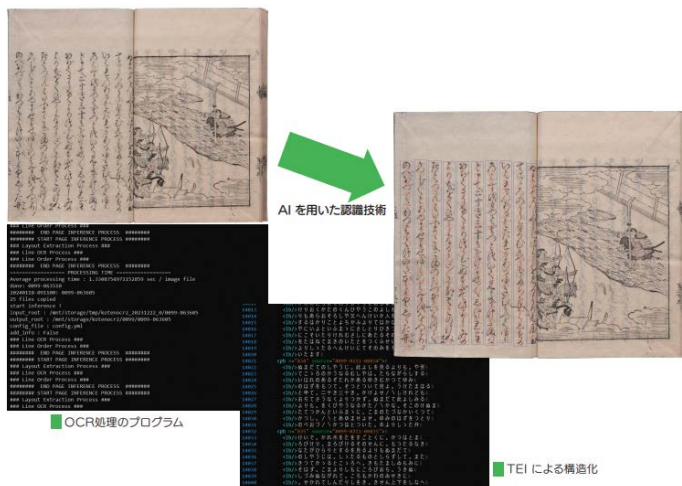
In this project, we conduct a variety of collaborative research with different disciplines beyond the scope of humanities.

## Construction of Data Infrastructure

We develop both the hardware and software aspects of the data-driven research system designed to serve as foundation for this project, creating also a plan for how it will operate, which we will then put into practical implementation.

## Development of Humanities Data Analysis Technologies

We develop methods and analytical technologies for data-driven integration of humanities data by extracting research materials through the use of AI technology and their adaptation to multiple fields, developing text analysis and search technologies for non-text materials such as images, and responding to international standardization of data storage.



Development of images of premodern Japanese texts into machine-readable data



Text Analytics implementing "Early Modern Edo Colloquialisms," "Early Modern Kamigata Colloquialisms," and "Early Modern Written Language" tokenizers



Example of TEI-compliant text structuring

### What is TEI (Text Encoding Initiative)?

An international collaborative project aimed at developing standards for the proper digitization of humanities texts. Operated by the TEI Consortium.

Enacted standards are published as TEI Guidelines.





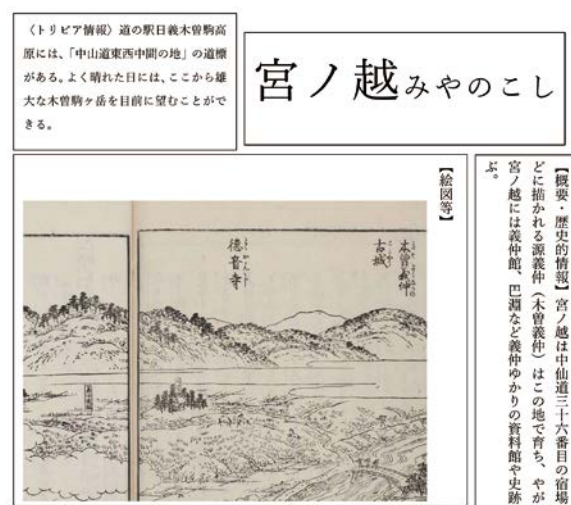
AI-based recognition technology (courtesy of Center for Open Data in the Humanities (CODH) <http://codh.rois.ac.jp/>)

## Applying the Results of Content Analysis

Transforming the kind of evidential data previously confined to use in the human sciences into data that can also be utilized by the natural and social sciences, we will engage in collaborative research projects directed towards the resolution of various issues facing contemporary society.



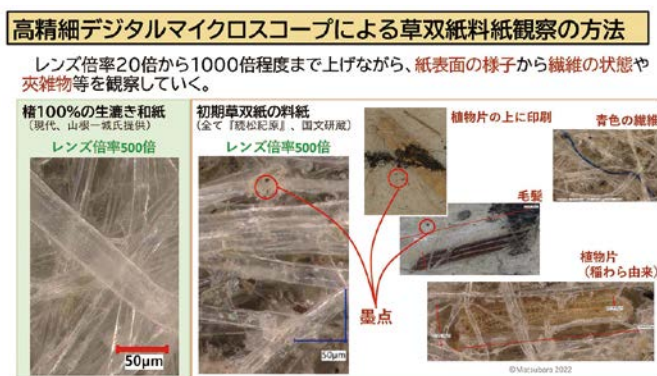
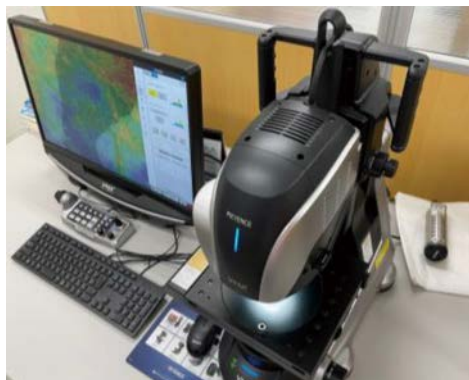
Collaborative research with the National Institute of Polar Research to study the meteorite that fell in the center of present-day Hachioji City, Tokyo, during the Edo period, in conjunction with ancient documents



Collaborative research with Shinshu University and others to develop edutainment materials for learning about classical knowledge and related local history and culture

## Material Analysis and Investigation

Japan's 1,000 years' worth of texts have not only the accumulated data of their written content to offer, but also all the data they themselves embody as physical objects. One of our aims is to establish a technological basis enabling the extraction—and analysis and investigation—of data from this material aspect of texts, on a scale only rarely attempted in the past.



High-resolution digital microscope used for material analysis research and an example of research results

# Major event results for FY2023

- Hosted the Japan Association for Digital Humanities (JADH) annual international conference, JADH2023, on September 20-22, 2023. In conjunction with the international conference, the workshop "Dialogue between Researchers and Librarians: A Roundtable on Promoting Data-Driven Humanities" was held on September 20, and the international symposium "Exploring Possibilities for Data-Driven Research in East Asian Studies" on September 21.
- Co-hosted the international symposium on materials analysis "The Near Future of Illustrated Storybook Research: Achievements of Combining the Humanities and Sciences Part 2" on December 17, 2023, jointly with Jissen Women's Educational Institute Bungei Material Laboratory (supported by Lasertec Corporation).



Poster for JADH2023



Poster for the SDGs experience event for junior and senior high school students

- Co-hosted the SDGs experience event for junior and senior high school students "Let's Learn about Recycling-oriented Society in the Edo Period through a Paper-making Experience Using Authentic Edo Period Books" on January 13, 2024, as an initiative related to material analysis, jointly with Jissen Joshi Gakuen Junior and Senior High School and Jissen Women's Educational Institute Bungei Material Laboratory.



Poster for seminars co-hosted with GLEC

- Co-hosted the public seminar on the Applying the Results of Content Analysis "Deepening of Fusion of Humanities and Science Approaches toward Disaster Mitigation and Climate Change Adaptation Using Historical Materials" on March 14, 2024, jointly with Ibaraki University's Global and Local Environment Co-creation Institute (GLEC).



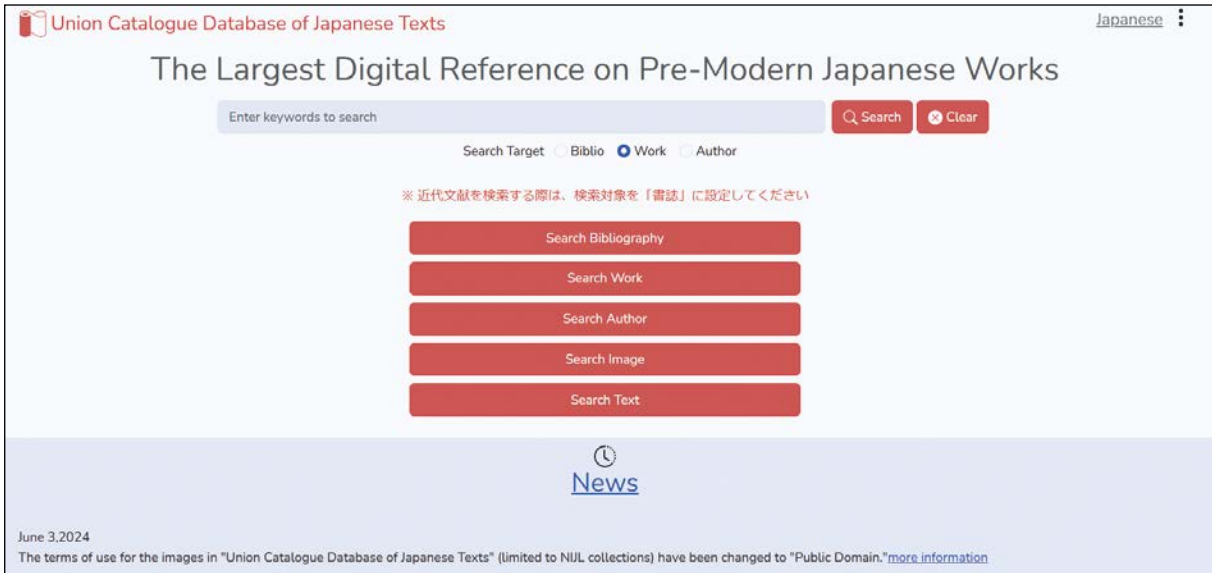
Seminar on data structuring for humanities

- Hosted the "Data Structuring Seminar for the Humanities" sessions three times on January 26, January 30, and March 8, 2024, targeted mainly at young researchers in the humanities as well as a wide range of researchers and intended for digital transformation of academic research and nurturing of human resources who have mastered new research methods.



# Union Catalogue Database of Japanese Texts

The Union Catalogue Database of Japanese Texts provides free of charge bibliographic information and complete digital images of premodern Japanese texts held by domestic and foreign institutions and individuals. This is a database of premodern Japanese texts integrated and developed from the "Union Catalogue of Early Japanese Books" and the "Database of Pre-modern Japanese Works" that have been made available by the National Institute of Japanese Literature.



## Features of the Union Catalogue Database of Japanese Texts

- The digitized texts are compatible with the IIIF (International Image Interoperability Framework), a standard for digital archives. IIIF-compatible images published in other digital archives can be displayed in conjunction. Also, a DOI (Digital Object Identifier) is assigned to the digitized texts to ensure permanency of access.
- We employ authority control by work and author. This way, by linking bibliographic and holdings records representing individual materials to the authority, it is possible to list bibliographies that have been transcribed and published in various forms and to search for works by author all at once. These authority data are inherited and developed from "Kokusho Sōmoku-roku" (Iwanami Shoten), and not only information on works and authors, but also information on the location of premodern Japanese texts and reprinted or reproduced materials that were included in "Kokusho Sōmoku-roku" can be referenced.
- Authority information (work and author) in the Union Catalogue Database of Japanese Texts is used as a "Title Marker" and "Author Marker" in the National Diet Library Search, and is registered in the Standard Identifier Source Codes of the Library of Congress as an identifier. It can also be used as the "Unified Title Authority" for NACSIS-CAT operated by the National Institute of Informatics. It is also used in the National Diet Library Search, the CiNii Research, and the Japan Knowledge.

[illegible]



# ●We are taking initiatives to disseminate and promote the use of the Union Catalogue Database of Japanese Texts.

## 1. Creation of flyers and pamphlets

We create flyers and pamphlets that provide an easy-to-understand overview of the Union Catalogue Database of Japanese Texts and its functions.



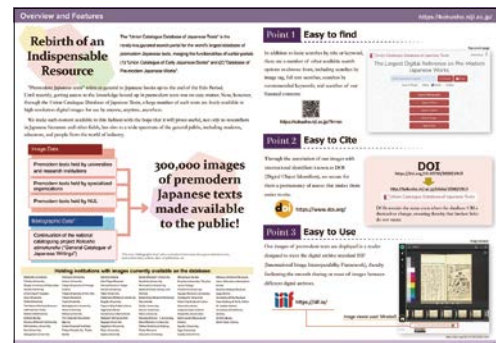
Flyer in Japanese



Flyer in English



Pamphlet in Japanese (Partial)



Pamphlet in English (Partial)

## 2. Staff members participate in various symposiums and other events to provide an overview and explain the features.

Symposiums visited:

- 70th Annual Meeting of the Japan Association of National University Libraries
- 33rd Annual Conference of the European Association of Japanese Resource Specialists
- JADH2023
- Library Fair
- 9th International Conference on Pre-modern Japanese Texts
- (Contribution) Current Awareness-E No460 CA-E2612 - "Union Catalogue Database of Japanese Texts" bringing premodern Japanese texts closer to people  
<https://current.ndl.go.jp/e2612>

## 3. Introduction of search technology

A technical introduction to the implementation of variant character search in the Union Catalogue Database of Japanese Texts is available in the GitHub repository and as a YouTube video.

- National Institute of Japanese Literature GitHub repository "Introduction of case studies of variant character handling in the Union Catalogue Database of Japanese Texts"  
<https://github.com/kokubunken/kokusho-itaiji-search>
- National Institute of Japanese Literature YouTube channel "National Institute of Japanese Literature Tech Talk Vol 1"  
<https://www.youtube.com/watch?v=sNBKKeyfBGk>

# Activities Overview

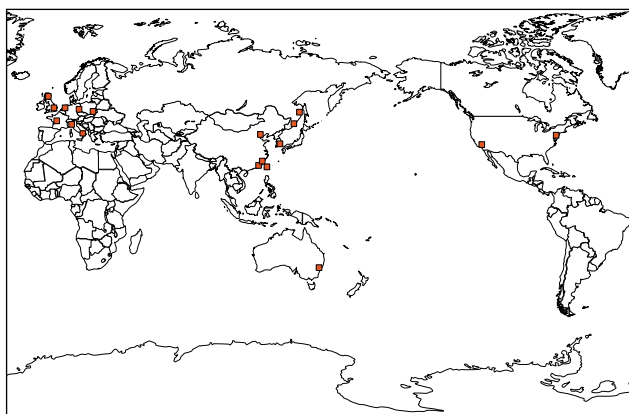
## Aims of the Work undertaken by NIJL

This institute performs specialized surveys and research on documents of Japanese literature and related fields housed at institutions both in Japan and overseas. It also seeks to expand its own collection of original materials and photographic facsimiles, organize and preserve information gathered on such materials' location and bibliography, and provide a foundation for the study of Japanese literature and related fields. It also makes its materials available in various ways to users in Japan and abroad, while contributing back to the society through initiatives such as exhibits and lecture meetings.

### 1 Surveying and Collecting

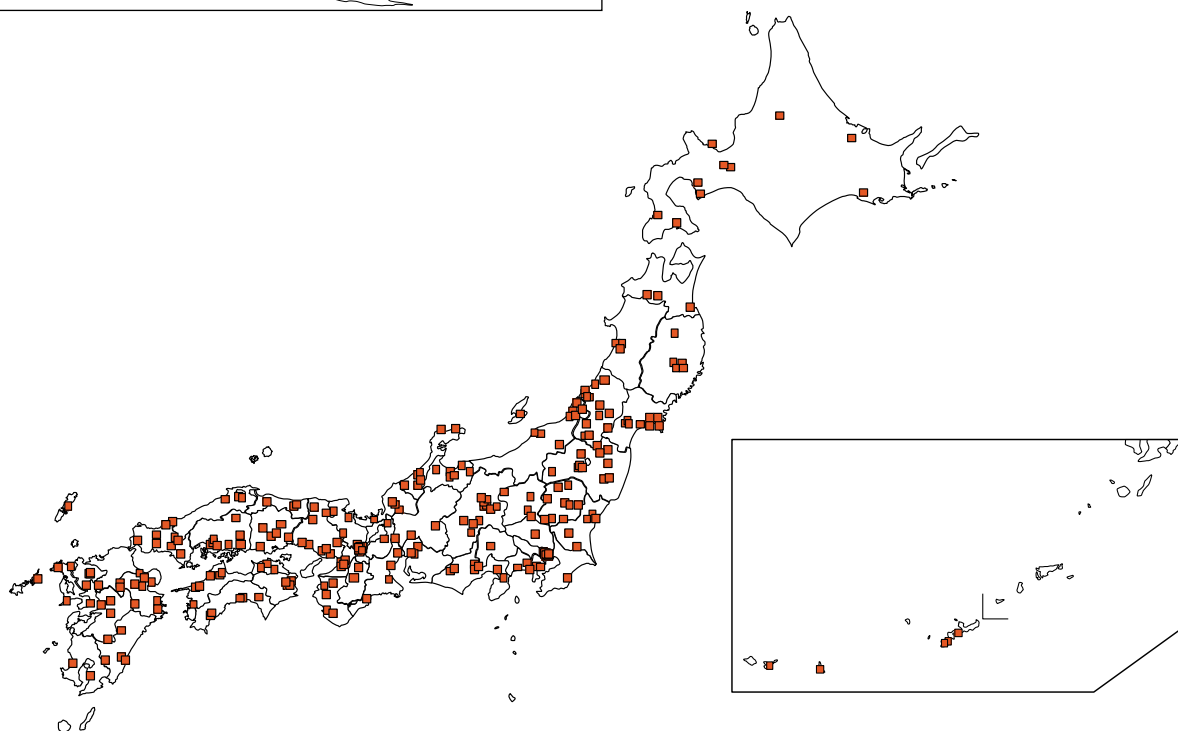
In collaboration with researchers from universities throughout Japan, institute personnel travel to the sites of collection of original documents—such as manuscripts and printed editions—related to Japanese literature and engage in research with a bibliographical focus.

In conjunction with such research, original materials stored in libraries and archives throughout Japan are added to NIJL's own collections through full-volume photography by means of digital images and thereby made available to the general public.



Items Surveyed or Collected to Date

Surveyed	Japan	1,037 locations	425,288 items
	Overseas	67 locations	16,367 items
	Total	1,104 locations	441,655 items
Collected	Japan	399 locations	227,678 items
	Overseas	13 locations	1,518 items
	Total	412 locations	229,196 items



## ■ List of Locations Surveyed FY 2023

### Kanto Region

The Imperial Household Agency,  
Archives and Mausolea Department

National Institute for Japanese  
Language and Linguistics

Saimyoji Temple

### Chubu Region

Hamamatsu City Kamonomabuchi  
Museum

### Kinki Region

Kasugataisha Shrine

Zuikoh-ji Temple

### Chugoku / Shikoku Region

Tottori Prefectural Museum

Tezen Museum

Masamune Bunko

Hikari City Cultural Center

Uwajima Date Cultural Properties  
Association

Oozu City Library

Kochi Castle Museum of History

### Kyushu/Okinawa Region

Suwa Shrine  
(Suwa Bunko)

Oita Prefecture Ancient Sages  
Historical Archives

### Modern Materials

Kasaoka City Board of Education

## ■ List of Locations Collected FY 2023

### Kanto Region

The Imperial Household Agency,  
Archives and Mausolea Department

Hosei University (Kozan Bunko)

### Chubu Region

Toyama City Public Library  
(Yamada Yoshio Bunko)

Hamamatsu City Kamono Mabuchi  
Memorial Hall

### Kinki Region

Kyoto Women's University  
(Roan Bunko)

Kyoto City Library of Historical  
Documents

Kyoto Kanze Noh Theater

Zuikoh-ji Temple

### Chugoku / Shikoku Region

Tezen Museum

Masamune Bunko

Sohonzan Zentsuji Temple

Yasuda Women's University Library  
(Inaga Bunko)

Uwajima Date Cultural Properties  
Association

Oozu City Library

Kochi Castle Museum of History

### Kyushu / Okinawa Region

Yutoku Inari Shrine  
(Nakagawa Bunko)

Suwa Shrine (Suwa Bunko)

Hizen Shimabara Matsudaira Bunko

Matsura Historical Museum

Hirose Museum

### Modern Materials

Meiji Shinbun Zasshi Bunko,  
University of Tokyo

Mushakoji Saneatsu Kinenkan

Tokyo Keizai University

Fukuoka Literature Museum

KAGOSHIMA Modern Literature  
Museum

### Other Archive

EGAWA Bunko

Sanada Treasures Museum  
(Sanada Family Collection)

\*Honorific titles of owners  
have been omitted.



## 2 Public Access to NIJL's Collections

The institute's library allows the perusal of documents and provides various copy services. It is also possible for users in remote locations to access documents and copy services through the interlibrary loan system. Those not affiliated with any university can request copies directly by post, fax, or email. In addition, collections inquiries by telephone and reference questions submitted by post, fax, or email are also accepted.



Library

### Library Services Guide

Service Hours	Hours of Operation	Weekdays	9:30–18:00
		Saturdays	9:30–17:00
	Closed Stack Requests	Weekdays	9:30–17:00
		Saturdays	9:30–16:00
	Copy Services		9:30–16:00
Closed			<ul style="list-style-type: none"> <li>• Sundays and public holidays</li> <li>• New Year holiday (December 27–January 5)</li> <li>• Annual collections inspection period (February)</li> <li>• 4th Wednesdays of every month</li> <li>• Summer holiday</li> </ul> (In addition, the institute may be close for other reasons. Please check posted signs and the institute's web page.)
Services Offered	Collections	Microfilm, Japanese rare books (manuscripts and print editions), historical documents, printed books, photographic facsimiles, books on local history from across the country, and periodicals. Prior appointments are required to view historical documents, rare books, special collections. (These are not available on Saturdays.)	
	Photo duplication Services	Electronic photocopying (including photocopying using a reader printer) and positive films (excluding historical documents)	
	Photography	Historical documents and other such materials excluded from electronic photocopying	
	Lending	Overnight lending of printed-out facsimile copies (some books excluded)	
	Lending for Exhibitions	Lending for exhibitions at libraries, archives, museums, etc.	
	Reference Service	Accepting and responding to questions and requests for document searches	
	Interlibrary Loan	Photocopying and lending through the interlibrary loan system (ILL)	
Inquiries	Phone	Usage in General : 050-5533-2926, Academic Materials Section Interlibrary Loan (ILL): 050-5533-2926, " Historical documents: 050-5533-2930, " Use in Publications: 050-5533-2930, "	
	F A X	042-526-8607	
	E-mail	etsuran@nijl.ac.jp	

## Materials in NIJL's Collections

Types of Materials			No. of Items, etc.	No. of Volumes, etc.
Microfilm Materials	Microfilm	Japanese Literature	195,097 items	38,192 reels
		History	202 items	6,308 reels
	Printed Photographic Facsimiles	Japanese Literature	—	68,935 volumes
		History	—	11,196 volumes
Books	Premodern Japanese texts		20,352 items	65,804 volumes
	Printed books, printed-out photographic facsimile copies, etc.		118,555 items	205,000 volumes
	Periodicals		9,578 publications	—
	Microfiche	Japanese Literature	16,667 items	57,358 sheets
Historical Documents			511 items	about 520,000 items
Historical Documents and Other Materials on Loan to the Library		Japanese Literature	13 items	9,540 volumes
		History	17 items	6,847 items

## Representative Collection Materials

### Materials Related to Japanese Literature

#### Rare Books

*Kasuga Kaishi* (Important Cultural Property), a 1682 Aratoya edition of *Koushoku Ichidai Otoko*, an illustrated old moveable-type edition of *Soga Monogatari*, a Kamakura-era manuscript of *Shin Kokin Wakashu*, a Nara ehon edition of *Utsuho Monogatari*, the *Shin Kokin Wakashu Senka Soko*, and a Kamakura period manuscript of *The Tale of Genji* (16 chapters) (222 items in all)

#### Special Collections

*Kokin Wakashu* (Collection of Ancient and Modern Poetry) and related works formerly owned by Kyoichi Nishishita (Hatsukari Collection); anthologies of Chinese poetry from the Edo and Meiji periods formerly owned by author Shinichiro Nakamura (Japanese Chinese Poetry Collection); *Essays in Idleness* and other works (Isao Kojo Collection); a collection centered on the *Shin Kokin Wakashu* (New Collection of Ancient and Modern Poetry) (Kaifu Rogetsu Collection); diaries, records, and documents related to court lore, literature, and the performing arts from the Tayasu Tokugawa family (Tayasu Tokugawa family materials (Denpan Bunko)); books, documents and records collected by Ikujiro Ukai, a politician of the Meiji era (Ukai Bunko); a collection including works by Soko Yamaga (Yamaga Bunko); a collection centered on *The Tales of Ise* and related works (Tesshinsai Bunko); and 27 others.

#### Materials on Loan to the Library

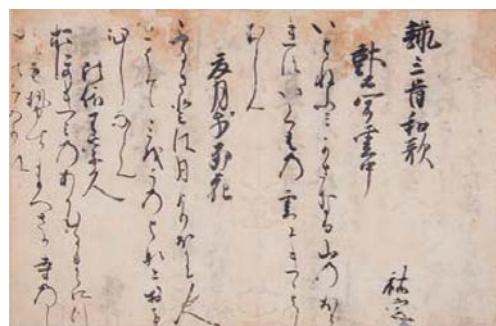
Materials from 12 collections, including, among others, six items from the collection of KANEKO Motoomi, 156 items from the ancient manuscript fragment collection of SAKATA Yasuyoshi, and 50 boxes containing 6,690 pages of documents from the Masuda Collection.

#### Historical Documentary Materials

The Historical Materials collection focuses on the early modern and modern periods and contains over 520,000 items, covering nearly every region of Japan.

The early modern materials consist for the most part of town- and village-level documents (such as the Owari no Kuni Nagoya Moto Zaimokucho Inuyamaya Kandoke documents, and the Shinano no Kuni Takaigun Higashi Ebemura Yamada Shozamonke documents), but they also contain warrior-class documents (such as the Shinano no Kuni Matsushiro Sanadake documents, the Awa no Kuni Tokushima Hachisuka documents, and the Yamashiro no Kuni Yodo Inabake documents), court-family documents (such as the Yamashiro no Kuni Kyoto Sanjonishike documents), and documents from religious institutions (such as the Yamashiro no Kuni Kadonogun Saga Tenryūji Tacchū Rinsenji documents).

The modern collections contain documents dealing with prefectural, municipal, and village-level government (such as the Aichi Prefectural Office documents and the Okayama, Hiroshima, and Tottori Prefectural and Municipal documents).



Kasuga kaishi  
(National Institute of Japanese Literature collections)



Closed Stacks

### 3 International Exchange

Japanese literature is a field of study pursued throughout the world. An important challenge facing Japanese literary research today is learning to perceive Japanese literature from a variety of different research viewpoints and methods. Based on such an awareness, NIJL has established the International Collaboration Division to revitalize activities of international exchange. As part of this, we have actively engaged in a number of activities in Japan and overseas, such as the hosting of various symposia, seminars, and conferences devoted to research on premodern Japanese texts.

Furthermore, the Global Consortium for Japanese Textual Scholarship was established as a voluntary organization on November 1, 2020, with the aim of enabling institutions both domestic and international to work together by sharing their limited resources and complementing each other's strengths and weaknesses in order to promote the study of pre-1900 Japanese manuscripts, scrolls, and printed books. The secretariat for this consortium is at NIJL. As of the end of March 2024, there are 83 participating organizations (41 in Japan and 42 overseas). <https://kotenseki.org/>

### Academic Exchange Agreements

As an international center for research on Japanese literature, NIJL is actively engaged in a variety of academic exchange projects with researchers and research institutions overseas. In particular, it is the conclusion of academic exchange agreements with overseas institutions that makes stable, ongoing research exchange possible.

Activities center on the exchange of researchers between institutions in Japan and overseas, as well as the hosting of international research symposia. They also include the implementation of joint surveys and joint research projects and extend to the hosting of graduate students for short-term training.

Presently, academic exchange agreements have been concluded with the following overseas institutions:

- Collège de France, Institute of Advanced Japanese Studies (France)
- Ca' Foscari University of Venice, Department of Asian and North African Studies (Italy)
- The University of Naples "L' Orientale" (Italy)
- Sapienza University of Rome, Italian Institute of Oriental Studies (Italy)
- University of Florence, Department of Education, Languages, Intercultural Studies, Literatures and Psychology (Italy)
- Beijing Foreign Studies University, Beijing Center for Japanese Studies (China)
- Leiden University, Faculty of Humanities (The Netherlands)
- The University of British Columbia, Faculty of Arts, Department of Asian Studies (Canada)
- Columbia University, Department of East Asian Languages and Cultures (U.S.)
- Korea University, Global Institute for Japanese Studies (Republic of Korea)
- University of California, Berkeley, C.V. Starr East Asian Library (U.S.)
- Berlin State Library (Germany)
- Vatican Apostolic Library (Vatican City State)
- University of Hawaii at Manoa, Department of East Asian Languages and Literatures (U.S.)
- Heidelberg University, Institute of Japanese Studies (Germany)
- Goethe University Frankfurt am Main, Faculty of Linguistics, Cultures, and Arts (Germany)
- The British Library Board (U.K.)
- The Smithsonian Institution (Freer Gallery of Art & Arthur M. Sackler Gallery) (U.S.)
- Inter-University Center for Japanese Language Studies
- Institute of Japanese Studies Dankook University (Republic of Korea)
- THE UNIVERSITY OF KANSAS (U.S.)
- The North American Coordinating Council on Japanese Library Resources (North America)

### Materials Workshop

Aimed at next-generation researchers, this workshop is co-hosted with the Inter-University Center for Japanese Language Studies (IUC) and held two or three times a year, generally on an in-person basis. The workshop offers a useful forum that gives practical guidance primarily for developing research projects based on pre-modern Japanese texts. The content includes general introductions to the handling of various pre-modern texts, explanations of survey and usage methods for primary-source materials, and advice on how to profitably use the NIJL databases and other similar resources.



## International Conference on Japanese Literature (ICJL)

This Conference is intended to further studies on Japanese literature, to foster next-generation researchers in the field, and to deepen the links between researchers inside and outside of Japan. While in the past held each fall, it was moved to early May starting with the 44th Conference, in order to facilitate the participation of foreign exchange students.

The 47th Conference will be held in a hybrid in-person/online format.

Dates: Sat/Sun May 11-12, 2024

Venue: National Institute of Japanese Literature (Tachikawa City, Tokyo) and online (Zoom Meetings and YouTube Livestream)

The poster for the 47th International Conference on Japanese Literature (ICJL) is divided into two main sections for the dates May 11 and May 12, 2024. It lists various sessions with topics, speakers, and times. The sessions are organized into blocks, with some sessions running simultaneously. The poster also includes contact information for the National Institute of Japanese Literature and the National Institute of Japanese Literature Library.

47th ICJL poster  
(Scheduled to be held on May 11-12, 2024)

## Seminars on Premodern Japanese Books

We hold seminars focused on the bibliography and literary culture of premodern Japanese books, one of the foundations of Japanese culture, in collaboration with overseas researchers and research institutes.

9th	Feb 27, 2021	Held online (jointly with the Beijing Foreign Studies University, Beijing Center for Japanese Studies)
10th	Mar 19, 2022	Held online (jointly with the Beijing Foreign Studies University, Beijing Center for Japanese Studies)
11th	Mar 26, 2023	Held online (jointly with the Beijing Foreign Studies University, Beijing Center for Japanese Studies)
12th	Mar 30, 2024	Held online (jointly with the Beijing Foreign Studies University, Beijing Center for Japanese Studies)



The 8th Seminar on Premodern Japanese Books



The 12th Seminar on Premodern Japanese Books poster

## Exchange with Overseas Researchers (Foreign and Outside Researchers)

To promote the internationalization of research on Japanese literature, we invite research fellow scholars from abroad who are active on the front lines of research into Japanese literature and other related fields, thus offering our institute as a site for the use of academic resources and exchanges of expertise.

## 4 Community Outreach Activities

NIJL contributes to the society by widely publicizing the results of its research via exhibitions, lectures, symposia, and various seminars.

### Exhibitions

The institute hosts exhibitions in its first-floor exhibition room to showcase the results of its documentary surveys and other collaborative research projects.

#### Planned Exhibitions for FY2024

##### Regular Exhibition: “Various Japanese Books”

Planned to be held April 18 to August 9, 2024

##### Special Exhibition: “The Gift from *Matsumo Bunko*”

Planned to be held September 5 to October 22, 2024

##### Special Exhibition:

“Makura no sōshi and the Shunsho Bunko Collection: Focusing on the Former Collection of Tanaka Jutarō”

Planned to be held October 28 to December 16, 2024

##### Special Exhibition: “The New World of The Tale of Genji”

(Venue: Tamashin Museum) Planned to be held January 11 to March 16, 2025

##### Regular Exhibition:

##### “Japanese Literary History Based on Documents”

Planned to be held from January 23, 2025, to April 18, 2025

The institute’s website

<https://www.nijl.ac.jp/koten/webtenji/>



Exhibition room



##### Special Exhibit Corner

While the Regular Exhibition is being held, a special exhibit corner will be set up within the exhibition room to display works from the institute’s holdings.

##### Web Exhibition room

### Lecture Series

#### (1) Archives College

Long- and short-term courses are offered for the purpose of cultivating staff specialized in tasks such as archival record preservation and the provision of user services.

The long-term lecture course is scheduled to be held at the institute over a total of six weeks from Monday, July 22 to Friday, August 9 and from Monday, August 26 to Friday, September 13. Further, a short course will be held at Nagano Prefectural Museum of History in Chikuma City, Nagano Prefecture, from Monday, November 11, to Saturday, November 16.

#### (2) Workshop on Pre-Modern Japanese Books

This workshop, held in cooperation with the National Diet Library, seeks to impart to librarians from Japan and abroad who deal with premodern Japanese books the requisite basic knowledge about such books and their handling.

Planned to be held in FY2024 for four days from Tuesday, July 2 to Friday, July 5.



2023 Archives  
College Short-Term Course



Workshop on Pre-Modern  
Japanese Books (2023)

### The Tama Academic Cultural Platform “Plat NIJL”

NIJL concluded an agreement with Tama Shinkin Bank to establish the Tama Academic Cultural Platform “Plat NIJL,” to be constituted with NIJL at its core, by various businesses, local government bodies, universities, and other groups as a platform to ensure the continual implementation of projects promoting academic research and cultural activities in the Tama Region.

“Plat NIJL” projects will involve the holding of courses and lectures on academic research and cultural activities in the Tama Region, collaboration and cooperation with various groups to make use of NIJL materials and databases, and the promotion of industry-academy cooperation in general.

Please address inquiries to Staff in charge of Plat NIJL, National Institute of Japanese Literature

Email: [platform@nijl.ac.jp](mailto:platform@nijl.ac.jp)

### NIJL Arts Initiative: Innovation through the Legacy of Japanese Literature

Since October 2017, we have been implementing the project, the NIJL Arts Initiative: Innovation through the Legacy of Japanese Literature. This project is to bring artists from various fields and non-native Japanese translators into contact with our rich collection of premodern texts and to co-create new cultural and artistic values through the creative workshops with our researchers.

Website for the NIJL Arts Initiative

<https://www.nijl.ac.jp/pages/nijl/en/>



NIJL Art Talk

Sei Shōnagon is about to finish writing *Makura no sōshi*  
—I have used up my brush, and when I have finished...—

# Publicly Available Databases

The institute maintains various databases for purposes of research into Japanese literature and other related fields. The following databases are available from the database page of our web site:

<https://www.nijl.ac.jp/search-find/#database>

## ●NIJL OPAC

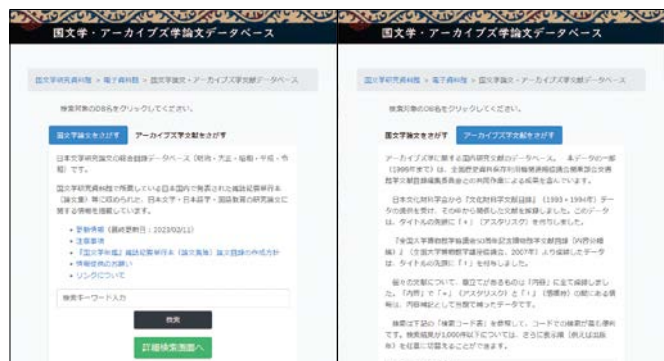
This is a catalog of the institute's collection of books, documents, and magazines (serial publications) from the Meiji Period onward.

## ●Database of Academic Papers in Japanese Literature and Archival Studies

The database offers a collection of papers on Japanese literature from 1888 to today, along with Japanese papers on archival studies.

The Database lists information on studies in Japanese literature, Japanese linguistics, and Japanese language education compiled in journals, bulletins (monograph compilations), and other forms in the NIJL holdings.

The archival studies papers listings include content created with the Catalog Editing Committee of the Japan Society of Archives Institutions, Kanto District Branch.



Database of Academic Papers in Japanese Literature and Archival Studies

## ●Union Catalogue Database of Japanese Texts

This is a searchable database of works, authors, bibliographic information, and high-resolution images of pre-modern texts (from the Edo Period and earlier), and other materials held by NIJL and various other institutions inside and outside of Japan.



Union Catalogue Database of Japanese Texts

## ●Archival Holdings on Japanese History

These are archives of early modern and modern documents, records, and objects collected and maintained by the Ministry of Education Historical Archives (founded in 1951) and its successor, the National Institute of Japanese Literature.

## ●Directory of Overseas Collections of Old and Rare Japanese Books, Other Print Materials, and Manuscripts

This directory provides information in English (and in Japanese in some cases) on contact information for institutions outside of Japan keeping premodern Japanese texts, and the accessibility of their collections.



Archival Holdings on Japanese History

\*1 See p. 14-15 for information on the Union Catalogue Database of Japanese Texts.

\*2 Some of the database material released up to FY2022 is available as research information at the NIJL Repository.



# Researchers (as of April 1, 2024)

## Director-General

Name	Research Interests
WATANABE Yasuaki	History of waka

## Research Department

Name	Position	Research Interests
IRIGUCHI Atsushi	Professor, Deputy Director-General (in charge of planning and coordination)	Early modern literature
KANSAKU Ken'ichi	Professor, Deputy Director-General (in charge of research)	Early modern Japanese literature, particularly the history of waka and the arts
OKAZAKI Makiko	Professor (Head of Researcher)	Research on Japanese literature of the Heian and medieval periods and on waka literature
KIGOSHI Shunsuke	Professor (Head of Researcher)	Early modern Japanese literature, particularly the history of the novel
NISHIMURA Shintaro	Professor (Head of Researcher)	Preservation of historical records in areas affected by the Fukushima nuclear disaster, editing of the <i>Oaza Magazine</i>
FUJIZANE Kumiko	Professor (Head of Researcher)	Political culture of early modern and restoration-era Japan and the establishment of documentary book studies
YAMAMOTO Kazuaki	Professor (Head of Researcher)	Research on 19th-century Japanese literature
SAITO Maori	Professor, *Chair of Japanese Literature (SOKENDAI)	Medieval literature
WATANABE Koichi	Professor	Early modern Japanese urban history and archives studies
OYAMA Keizo	Specially appointed Professor	Research on informatics, information retrieval, and construction and collaborative use of data sets to be used in research
OTA Naohiro	Associate Professor	Regional government in early modern Japan and early-modern archives studies
KIKUCHI Nobuhiko	Associate Professor	Digital history, digital public history, and the modern and contemporary history of Spain
KITAMURA Keiko	Associate Professor	Research on information utilization technologies in the Humanities
KURIHARA Yutaka	Associate Professor	Representations of the Late Edo and Meiji Restoration Periods in Modern Japanese Literature
DAVIN Didier	Associate Professor	Medieval Buddhism and literature
TADA Kurahito	Associate Professor	"Citations" in modern Japanese literature
NAKANISHI Satoko	Associate Professor	Heian-period literature and narrative literature
MATSUDA Kuninori	Associate Professor	Utilization of computing technology in the humanities
YAMAMOTO Yoshitaka	Associate Professor	Japanese literature in Classical Chinese, particularly of the Edo and Meiji periods
OSHIUMI Keiichi	Specially appointed Associate Professor	Research evaluation in social science and humanities, policy research
MATSUBARA Noriko	Specially appointed Associate Professor	Research on Japanese literature with a focus on 18th-century illustrated storybooks (Red Books, Black Books, Blue Books)
MORIOKA Tomohiko	Specially appointed Associate Professor	Informatics on Chinese characters, character processing based on character ontology, and general character theory



Name	Position	Research Interests
EDO Hideo	Assistant Professor	Heian-era literature, narratology
KAWAKAMI Hajime	Assistant Professor (Tenure Track)	Japanese medieval literature; in particular waka literature of the Muromachi Period
KNOTT Jeffrey	Assistant Professor	Classical studies and the reception of classical literature in medieval Japan
TAKEUCHI Ayano	Specially appointed Assistant Professor	Data-driven textual analysis of Heian literature
MATSUNAGA Ryusei	Specially appointed Assistant Professor	Research on publishing culture in early modern and modern Japan and on booklending (kashihon) culture

## Center for Data-Driven Research on Premodern Japanese Texts

Name	Position	Research Interests
OYAMA Keizo	Director (dual post)	Research on informatics, information retrieval, and construction and collaborative use of data sets to be used in research
KIGOSHI Shunsuke	Deputy Director (dual post)	Early modern Japanese literature, particularly the history of the novel
KIKUCHI Nobuhiko	Deputy Director (dual post)	Digital history, digital public history, and the modern history of Spain
NISHIMURA Shintaro	Professor (dual post)	Preservation of historical records in areas affected by the Fukushima nuclear disaster, editing of the <i>Oaza Magazine</i>
YAMAMOTO Kazuaki	Professor (dual post)	Research on 19th-century Japanese literature
MATSUDA Kuninori	Associate Professor (dual post)	Utilization of computing technology in the humanities
MATSUBARA Noriko	Specially appointed Associate Professor (dual post)	Research on Japanese literature with a focus on 18th-century illustrated storybooks (Red Books, Black Books, Blue Books)
MORIOKA Tomohiko	Specially appointed Associate Professor (dual post)	Informatics on Chinese characters, character processing based on character ontology, and general character theory
TAKEUCHI Ayano	Specially appointed Assistant Professor (dual post)	Data-driven textual analysis of Heian literature

## Core Data Center

Name	Position	Research Interests
YAMAMOTO Kazuaki	Director (dual post)	Research on 19th-century Japanese literature
KANSAKU Ken'ichi	Deputy Director (dual post)	Early modern Japanese literature, particularly the history of waka and the arts
OKAZAKI Makiko	Professor (dual post)	Research on Japanese literature of the Heian and medieval periods and on waka literature
KIKUCHI Nobuhiko	Associate Professor (dual post)	Digital history, digital public history, and the modern and contemporary history of Spain
TADA Kurahito	Associate Professor (dual post)	"Citations" in modern Japanese literature
MATSUDA Kuninori	Associate Professor (dual post)	Utilization of computing technology in humanities
MORIOKA Tomohiko	Specially appointed Associate Professor (dual post)	Informatics on Chinese characters, character processing based on character ontology, and general character theory
TAKEUCHI Ayano	Specially appointed Assistant Professor (dual post)	Data-driven textual analysis of Heian literature

# Support for Young Researchers

## ■ Special Inter-University Research Fellows

At the request of national, public, and private universities, in FY1979, the Graduate School Education Collaborative System was established to promote cooperation in graduate-level education and began accepting graduate students. The program later expanded participation in FY1998 with the inauguration of the Special Inter-University Research Fellows Program.

Students currently studying Japanese literature and related subjects in doctoral or master's programs at domestic national, public, and private universities are eligible for acceptance as Special Inter-University Research Fellows and provided at NIJL with the supervision they need. NIJL hosts around ten fellows in total at a time, each as a general rule for a period of one year, beginning in April and ending the following March.

Fiscal year	2019	2020	2021	2022	2023
Total Active Fellows	6	6	4	6	4



## ■ Events Aimed at Young Researchers

### ■ International Conference on Japanese Literature (ICJL) (FY2023 results)

Overview: Face-to-face or online research presentations (oral presentations)

Poster presentations (information session)

14 research presentations, divided into 4 sessions (including 8 young researchers)

2 poster presentations (including 1 young researchers)

Participants: 98 (2 days' total)

### ■ Materials Workshop Series (FY 2023)

This workshop was held twice, on November 15 and February 21 at NIJL and, in part, online. Participants: Up to 113, including participants from Japan, the United States, China, and Italy.

### ■ Workshop on Pre-modern Japanese Books (FY 2023)

We hold a series of trainings providing introductory-level knowledge on the bibliography of premodern Japanese texts, aimed in particular at young researchers. In FY 2023, this training program was scheduled on the first and second days of the 21st "Workshop on Pre-Modern Japanese Books."

### ■ Prize in Classical Japanese Literary Scholarship (Sponsored by the National Institute of Japanese Literature Support Association)

The "Prize in Classical Japanese Literary Scholarship" is a continuation of the "Japanese Classical Literature Association Award" sponsored by the "Japanese Classical Literature Association" foundation, established as the "National Institute of Japanese Literature Support Association" with the goal of encouraging and aiding young researchers of classical Japanese literature.

Eligible recipients of the award (as many as three per year) must have been under the age of 40 at the time of the work submitted for consideration. One recipient was selected by the award committee for the 16th "Prize in Classical Japanese Literary Scholarship," based upon the committee's consideration of their work (published books) from the period of January to December, 2022.



# Graduate Education

## Japanese Literature Program, Graduate Institute for Advanced Studies, SOKENDAI

This program, with the National Institute of Japanese Literature as its parent institute, fosters students to become leaders in the new development of Japanese literature. Specifically, this program aims to enable students to acquire specialized research techniques and comprehensive analytical skills and knowledge by focusing on primary sources as research subjects, mainly literature, among cultural resources. The program fosters logical thinking and writing skills, creative and interdisciplinary perspectives, as well as the ability to tackle issues in peripheral fields, to nurture researchers with a broad perspective who can tackle issues in surrounding fields and play an active role both domestically and internationally.

This program consists of only the doctoral program, and students in this program will study and conduct research activities at the National Institute of Japanese Literature, National Institutes for the Humanities, located in Tachikawa City, Tokyo.

### Graduate Program Students (as of April 2024)

Quota	1st year	2nd year	3rd year	Total
2	1	2	4	7

### Degree Recipients of Past 5 Years

FY2019	FY2020	FY2021	FY2022	FY2023
0	2	3	2	0

\*includes the number of those who were Ph. D. by way of Dissertation

### Careers of Degree Recipients

Aoyama Gakuin University Human Innovation Research Center, Kanazawa University, Keio University, Korea University, National Institute of Japanese Literature, Sichuan International Studies University, Shohoku College, Tsuru University, Tokyo Kasei University Junior and Senior High School, Japan Society for the Promotion of Science, Hyogo University of Teacher Education, Morioka University, Waseda University, Soiku Co., Ltd., and others.

Programs	Research institutions
Anthropological Studies	National Museum of Ethnology
Japanese Studies	International Research Center for Japanese Studies
Japanese History	National Museum of Japanese History
Japanese Literature	National Institute of Japanese Literature
Japanese Language Sciences	National Institute for Japanese Language and Linguistics
Informatics	National Institute of Informatics
Statistical Science	The Institute of Statistical Mathematics
Particle and Nuclear Physics	Institute of Particle and Nuclear Studies
Accelerator Science	Accelerator Laboratory / Applied Research Laboratory
Astronomical Science	National Astronomical Observatory of Japan
Fusion Science	National Institute for Fusion Science
Space and Astronautical Science	Institute of Space and Astronautical Science
Molecular Science	Institute for Molecular Science
Materials Structure Science	Institute of Materials Structure Science
Global Environmental Studies	Research Institute for Humanity and Nature
Polar Science	National Institute of Polar Research
Basic Biology	National Institute for Basic Biology
Physiological Sciences	National Institute for Physiological Sciences
Genetics	National Institute of Genetics
Integrative Evolutionary Science	Research Center for Integrative Evolutionary Science

\*Due to a reorganization, from April 2023, Department of Japanese Literature within the School of Cultural and Social Studies has been renamed Japanese Literature Program, Graduate Institute for Advanced Studies.

## Advantages of Japanese Literature Program

### Guidance by Multiple Supervisors

Students are supported by 18 expert supervisors representing experience in a wide variety of educational and research fields. To provide a system of supervision responsive to the needs of individual student research projects, one main supervisor and two supporting supervisors are chosen for each student to supply finely customized guidance that draws on multiple perspectives.

### An Environment Conducive to Education and Research

In conducting their research, students will have available to the massive collection of materials housed at NIJL. Graduate students may also avail abundant study facilities including graduate students' rooms, lecture rooms, graduate library studies, and common rooms.

### Financial Support

A comprehensive range of financial support is available, including support for travel expenses incurred in research activities such as on-site archival research domestically and overseas, as well as in attendance or presentation at scholarly conferences. Support is also provided through the active hiring of students as research assistants. Furthermore, photocopying of materials within NIJL is free (up to a certain limit). The institute can also purchase books to make available in the library upon request.



Lectures utilizing original documents and images



# Reference Data

## Staff, Budget, and Facilities (FY 2024)

Staff	(Unit: persons)	Budget	(Unit: 1,000 Yen)	Facilities	(Unit: m <sup>2</sup> )
Director General	1	Income	1,356,272	Total floor area	13,002
Professor	9	Administrative cost subsidies	1,352,913	This includes :	
Associate Professor	9	Non-subsidized income	3,359	Reading room	1,584
Assistant Professor	3	Expenses	1,356,272	Stack room / storage	2,416
Specially appointed Professor	1	Education and research cost	815,740	Exhibition room	355
Specially-appointed Associate Professor	3	Administrative overhead	540,532		
Specially-appointed Assistant Professor	1				
Administrative Staff	44				
Total	71				

## Grants-in-Aid for Scientific Research < KAKENHI > (FY 2024)

Research Categories	Review Classification	Principal Investigator	Research Project Title	Research period
Grant-in-Aid for Scientific Research (A)	General	IRIGUCHI Atsushi	Integrated research on text formation for a data-driven approach to Japanese literature and related fields	2022–2026
Grant-in-Aid for Scientific Research (B)	General	SAITO Maori	A Comprehensive Study of the Representation and Development of Literature and Art in the Middle Modern Period from the Perspective of the Receptive Circle for the Generation of Painting Titles, Theories of Painting, and Powder Books	2023–2026
Grant-in-Aid for Scientific Research (B)	General	KANSAKU Ken'ichi	Fundamental Study on the Early Modern Illustrated Books	2024–2027
Grant-in-Aid for Scientific Research (B)	General	WATANABE Koichi	Towards a Historiography of "Connections": Rethinking the Environmental History of Early Modern and Modern Japan	2024–2028
Grant-in-Aid for Scientific Research (B)	General	OTA Naohiro	Basic Research on the Control of Forest Resources in the Early Modern Period: Focusing on the Owari Clan	2024–2028
Grant-in-Aid for Scientific Research (C)	General	KIGOSHI Shunsuke	The restructuring and reception of 19th-century style "knowledge" as observed in local gazetteers and in stories of the fantastic	2020–2024
Grant-in-Aid for Scientific Research (C)	General	KOBAYASHI Kenji	A survey of and research on pictorial materials based on Noh and kyōgen of the early to mid-Edo period	2020–2024
Grant-in-Aid for Scientific Research (C)	General	YAMASHITA Noriko	Study of Middle-Early Modern Arts and Sciences in Tsuruya Nanboku Kabuki	2020–2024
Grant-in-Aid for Scientific Research (C)	General	DAVIN Didier	Works related to the early Daito Kokushi School	2021–2024
Grant-in-Aid for Scientific Research (C)	General	OKAZAKI Makiko	Comprehensive Research on the Generation and Development of Poem Titles from the Late Heian Period to the Muromachi Period	2022–2025
Grant-in-Aid for Scientific Research (C)	General	TADA Kurahito	Historical Research on Interrelations Between Japanese Modern Literature and Historical Concepts of Literary Style	2023–2025
Grant-in-Aid for Scientific Research (C)	General	NAKANISHI Satoko	Research on the Lengthening of the Genji monogatari within the household of Fujiwara no Michinaga	2023–2026
Grant-in-Aid for Scientific Research (C)	General	OSHIUMI Keiichi	Study on the Impact of Research Evaluation Systems on Researchers in the Humanities	2023–2026
Grant-in-Aid for Scientific Research (C)	General	YAMAMOTO Kazuaki	Developmental Study on Human Exchange in the Late Edo and Meiji Periods Concerning Pre-modern Japanese Texts	2024–2027
Grant-in-Aid for Scientific Research (C)	General	MATSUBARA Noriko	Development of the 18th- and 19th-century Jihon literature including later copies and redefinition of the history of illustrated storybooks as revealed by material analysis	2024–2027
Grant-in-Aid for Challenging Research (Pioneering)		WATANABE Koichi	Examining nationwide surveys of regional archives during the social transition periods and developing new methods	2020–2024
Grant-in-Aid for Early-Career Scientists		KNOTT Jeffrey	Basic Research on the History of Classical Studies in the Warring-States Period: The Genji Studies of Renga Masters in Particular	2021–2025
Grant-in-Aid for Early-Career Scientists		KURIHARA Yutaka	Literary Representations of the Bakumatsu and Meiji Restoration in the 1920s and 30s	2022–2025
Grant-in-Aid for Early-Career Scientists		YAMAMOTO Yoshitaka	Sinitic Prose Composition by Ito Togai	2022–2026
Grant-in-Aid for Early-Career Scientists		MATSUNAGA Ryusei	Research on the Locations and Holdings of Kashihonya Lending Libraries in Modern Japan	2023–2026
Grant-in-Aid for Early-Career Scientists		TAKEUCHI Ayano	Quantitative Research on Discourse in Heian Literature--the Phenomenon of Free Indirect Speech	2024–2026
Grant-in-Aid for Research Activity Start-up		KAWAKAMI Hajime	Preliminary Study of Ashikaga Yoshimasa's Waka and Renga	2023–2024
Grant-in-Aid for Research Activity Start-up		KAWATA Shoko	Basic Study of the Anecdotal Elements in the Medieval Origin-based Notes to the Kokinshu	2023–2024
Fund for the Promotion of Joint International Research (Fostering Joint International Research (B))		KANSAKU Ken'ichi	Research and Study of Mitsui Collection at the University of California, Berkeley and Establishment of an International Research Center through its Utilization	2022–2025
Grant-in-Aid for Publication of Scientific Research Results (Databases)		YAMAMOTO Kazuaki	Union Catalogue Database of Japanese Texts	2020–2024
Grant-in-Aid for Publication of Scientific Research Results (Databases)		NISHIMURA Shintaro	Archival Holdings on Japanese History	2024
Grant-in-Aid for Publication of Scientific Research Results (Academic Books)		MATSUNAGA Ryusei	Rental Book Wholesalers and the Rental Book Culture: Publication, Distribution, and Reception of Entertainment Books	2024

(as of April 1, 2024)

## A List of Major Publications

### Publications Introducing NIJL

- Overview of the National Institute of Japanese Literature
- NIJL News (issued twice a year) (online only)
- Fumi



NIJL News



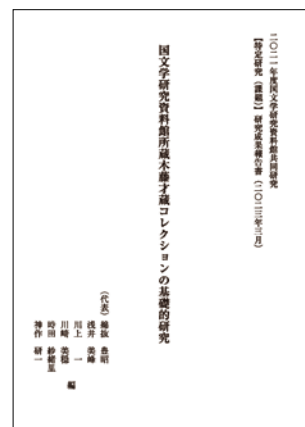
Fumi

### Publications Presenting Research Results

- Bulletin of the National Institute of Japanese Literature (online only)
  - Studies in Japanese Literature Series
  - Archive Studies Series
- Reports on the Results of Collaborative Research Projects



Bulletin of the National Institute of Japanese Literature: Studies in Japanese Literature Series



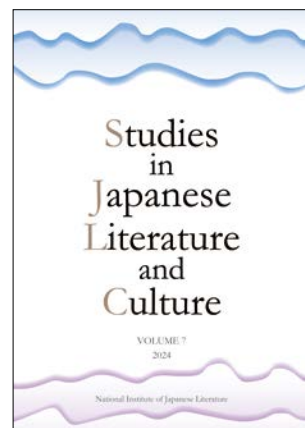
Reports on the Results of Collaborative Research Projects  
Basic Research on the NIJL Saizō Kidō Collection

### Project-related Publications

- Report on Investigation and Research (online only)
- Catalogue of historical collections (online only)
- Exhibition Catalogs
- Studies in Japanese Literature and Culture (online only)



Illustrated Exhibition Catalogue:  
"Special 50th Anniversary  
Exhibition: My Favorite Text at  
National Institute of Japanese  
Literature"



Studies in Japanese  
Literature and Culture



Inter-University Research Institute Corporation  
**National Institutes  
for the Humanities**

## National Institutes for the Humanities (NIHU)

The National Institutes for the Humanities (NIHU) was established in 2004 as a corporation to support and further develop inter-university research institutes\* that promote research in the humanities.

NIHU's six institutes

- National Museum of Japanese History (REKIHAKU)
- National Institute of Japanese Literature (NIJL)
- National Institute for Japanese Language and Linguistics (NINJAL)
- International Research Center for Japanese Studies (NICHIBUNKEN)
- Research Institute for Humanity and Nature (RIHN)
- National Museum of Ethnology (MINPAKU)



As international centers of excellence in their respective research fields, these institutes promote fundamental and interdisciplinary research in collaboration with domestic and international universities and other research institutes and researchers.

In addition, these institutes offer courses at the Graduate University for Advanced Studies (SOKENDAI). The six graduate (doctoral) courses are designed to take advantage of the institutes' resources and provide an array of specialized training for researchers

The NIHU Headquarters houses the Center for Innovative Research (CIR), which conducts research and projects that link multiple institutes and universities, and promotes joint research using a research infrastructure built on digital technology.

### \* Inter-University Research Institutes

As Japanese Centers of Excellence (COE) in their respective research fields, these institutes provide universities and other research institutes in Japan and overseas with large facilities and equipment as well as vast materials and information that are difficult for any individual university to maintain, thereby facilitating effective joint research.

## NIHU's Mission

As the only inter-university research institute corporation for the humanities, NIHU's mission is to comprehensively explore humanity and its cultures, and through this exploration, to ask what true abundance is, to promote harmony between nature and humanity, and to contribute to the survival and coexistence of humankind.

## NIHU's Vision

To realize its mission, in the NIHU's Fourth Mid-term Plan Period (FY2022-2027), NIHU aims to explore various social issues related to the diversity of human culture and social dynamics, try to solve them, and present new values and humanities knowledge that will serve as guidelines for the formation of a future society in which people and nature live in harmony and where science, technology, and humanity coexist. To achieve this, the Center for Innovative Research was established within the NIHU headquarters with the aim of forming new knowledge open to society. Based on the philosophy of open humanities research through co-creation with various people in Japan and overseas, the center will build a research platform using digital technology, promote joint research through that platform, and work on the formation of a "Knowledge Forum" as a place for exchange and collaboration with various people in society and the formation of an international network.



## Center for Innovative Research (CIR)

CIR promotes “NIHU Research Projects” and “NIHU Co-creation Initiatives.”

### NIHU Research Projects

As basic and interdisciplinary research on the humanities, which forms the core of NIHU, eleven research projects in three types will be implemented, leading to an expansion of academic networks and the creation of new fields to strengthen functions for fulfilling our mission as an inter-university research institute.

<b>Institute-based Projects</b> NIHU's six institutes have established priority research themes in accordance with their respective missions.	Construction of Japanese Historical Knowledge and Open Science Research
	Model Building in the Humanities through Data-Driven Problem Solving
	Empirical and Applied Research on the Japanese Language Based on Open Language Resources
	New Departures and Consortium for Global Japanese Studies: Pioneering and Cultivating Global Japanese Studies
	Renewing Modern Civilization through Nature-culture Complex toward Solving Global Environmental Problems
	Sustainable Development Humanities Research Based on the Info-Forum Archives of Human Culture
<b>Multidisciplinary Collaborative Projects</b> These are projects in which NIHU's institutes take on a central role while collaborating with other NIHU's institutes as well as universities and other external institutes, working with research themes that cut across different fields.	Interdisciplinary and Integrated Studies on Local Cultures: Aiming for the Emergence of Novel Communities
	Object-based Research of Nature-human Interactions up to the Anthropocene
	Expansion Studies of Synthetic Bibliology
<b>Network-based Projects</b> These are projects in which NIHU's institutes play a central role in forming a network with universities and other research institutes in Japan and overseas as well as implementing issues that are important to Japan and the world.	NIHU Global Area Studies
	Inter-University Research Institute Network Project to Preserve and Succeed Historical and Cultural Resources

### NIHU Co-creation Initiatives

These are projects that promote the sharing of research results and co-creation with local communities and societies, promote **Co-creation research projects** and **Co-creation outreach**, whose aim is to develop research in three ways: “social co-creation,” “digitalization,” and “international co-creation.”

#### Co-creation Research Projects

These projects promote joint research through co-creation with various organizations and people within and without NIHU as well as develop research in three ways.

- Establishing Science for Universal Communication (S\_COM) [social co-creation]
- Building Digital Library for Humanities [digitalization]
- Japan-related Documents and Artifacts Held Overseas: [international co-creation]
  - Early Diplomatic Japanese Collections Abroad: Contextualizing 19th Century Japanese Material Heritage in World History through On-site and Online Research and Use
  - Study on the Construction of Archival Infrastructure for the History of Modern Japan-Vatican Relations
  - Japan-related documents and artifacts in Hawai'i: historical and social survey interface

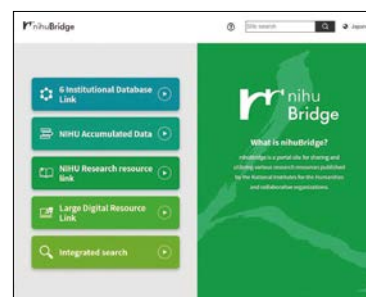
#### Co-creation Outreach

These initiatives implement projects to accelerate the three types of research development as well as aim to enhance and innovate research at NIHU's institutes and universities and other external institutes.

- NIHU Knowledge Co-creation Projects [social co-creation]
- NIHU "Digital Humanities" (DH) Projects [digitalization]
- NIHU Global Partnership [international co-creation]

#### nihuBridge

This is a portal site for sharing and utilizing diverse research resources disseminated by the NIHU and associated institutes.







### Saigashokuninburui

Compiler Rashakutsu Kikyu

Painter Gyokuzyuken Tachibana Minkou

### Directions

#### By Tama Intercity Monorail:

Get off at JR Tachikawa Station, make switch to Tama Monorail Tachikawa-Kita Station, get off at Takamatsu Station, and walk 10 minutes.

#### By Tachikawa bus:

From JR Tachikawa Station's north entrance, board bus at boarding area ②, get off at "Tachikawa Gakujutsu Plaza," and walk 1 minutes.

From JR Tachikawa Station's north entrance, board bus at boarding area ①, get off at "Tachikawa Shiyakusho," and walk 3 minutes.

From JR Tachikawa Station's north entrance, board bus at boarding area ②, get off at "Saibansho-mae," and walk 5 minutes.

#### On foot:

From JR Tachikawa Station, walk about 25 minutes.

#### By car:

From Chuo Expressway's "Kunitachi Fuchu IC," drive about 15 minutes. \*Free parking available

大学共同利用機関法人 人間文化研究機構

## 国文学研究資料館

10-3 Midori-cho, Tachikawa, Tokyo

TEL: 050-5533-2900

<https://www.nijl.ac.jp/>

National Institute of Japanese Literature (NIJL)

National Institutes for the Humanities

Address: 10-3 Midori-cho, Tachikawa city, TOKYO 190-0014, Japan

TEL: +81-50-5533-2900

