



後京極攝政前太政大臣

Contents

A Message from the Director, Dr. Robert CAMPBELL	3
Overview	4
Outline of Current Research Being Conducted at NIJL	6
Project to Build an International Collaborative Research Network for Pre-modern Japanese Texts	7
Activities Overview	16
International Exchange	23
Graduate Education	25
Databases	26
Researchers	27
Reference Data	29
National Institutes for the Humanities	30

A Message from the Director, Dr. Robert CAMPBELL

The new fiscal year has brought with it many changes, keeping me and our staff here busier than ever.

At NIJL, several projects that were in planning stages last year will go into full-scale operation, and we are simultaneously planning to start several new projects as well. Based on the achievements of the institute's core work, including research and collection surveys going back almost half a century since the institute was first located in Togoshi, as well as creating the "Database of Pre-modern Japanese Works," we have begun to publish an image database. This database is the core of our extensive Academic Frontier Promotion Program, known as the "Project to Build an International Collaborative Research Network for Pre-modern Japanese Texts." The kickoff occurred last October; since then, the traffic to our digital archive has significantly increased. With the reputation of the Database spreading widely, we have started to receive requests for academic co-operation and sharing visual data from a number of domestic and overseas institutions housing early Japanese books. Expanding the new database and conducting new research based on the database will create significant further progress.

This year marks the intermediate point of the decade-long Frontier Promotion Project. Thanks to the interim appraisal by the Council for Science and Technology, we have finally entered the second-half of the project. For visual data creation and visual tagging, we are adopting new methods such as social tagging, while promoting the development of unprecedented search technology that has been conducted in collaboration with the National Institute of Informatics. At NIJL, we work to enhance the contents of the new database and improve its functions.

We aim to finalize an increasing number of academic exchange agreements with research societies addressing the sphere of early Japanese books, through which we hope to increase and improve collaboration with researcher communities and further significantly position our mission as an inter-university research institute. NIJL, while continuing to conduct our core work of promoting Japanese literature studies, is also expected to facilitate accessibility to pre-modern books widely among researchers in other fields, and among those who are interested in the subject from around the globe, while developing new knowledge and create additional, sustainable cultural value.

From this perspective, we intend to enhance our work in the following three areas.

The first area is interdisciplinary studies and cooperation in a cross-industrial context. Last year, we internationally published our joint research results with the National Institute of Polar Research regarding historical aurorae. We also released images from Edo era cookbooks and uploaded them to a recipe website (Ajinomoto Foundation for Dietary Culture, COOKPAD Co., Ltd.) – both serve as excellent precedents.

The second area is regional collaboration, involving local universities we have joined with to promote the Frontier Promotion Project; local municipalities; and companies. For the network-building project that the NIJL is developing, while publishing materials and building the network of researchers remain our core tasks, the publication and utilization can greatly contribute to vitalizing the education and research of each university as well as those of local areas and cultures. Thus we are further enhancing our collaboration across Japan.

The third is accelerating global networking. Together with the ongoing international joint research projects, we are in the planning stages of publishing an open-source journal in English that will enable us to consistently examine these achievements. This journal will serve as an important impetus for humanities studies in Japan to be shared with the world beyond individual projects.

In addition, we will be launching and promoting several projects intended to reach out to society beyond the community of researchers. From this fiscal year, joining the program for the visualization and sophistication of research resources led by the National Institutes for the Humanities will enable us to conduct advanced studies concerning the presentation of early Japanese books. In the special exhibition to be held in the autumn, "Japan's Middle Ages – Prayer and Salvation," we intend to present part of the achievements. Following through with our work last year, while expanding the joint project with the Cultural Affairs Agency, "NIJL Arts Initiative," we will organize open workshops and present the creative efforts of artists and translators in residence. Further information will be announced on our new website, which has been completely updated this spring. Please do visit our website for occasional updates.



©Seiya KAWAMOTO

Overview

The Goals of NIJL

This institution strives to serve researchers in the field of Japanese literature as well as those working in various other humanities, by collecting in one location a vast store of material relating to Japanese literature gathered from all corners of the country. NIJL is therefore both a foundational as well as a comprehensive research institution working towards the promotion of advanced collaborative research into Japanese literature. By utilizing the fruits of more than four decades of accumulated research into pre-modern Japanese literature, NIJL works in cooperation with other research institutions and researchers, both in Japan and abroad, in order to build upon the wealth inherent in Japanese pre-modern texts, and thereby develop new fields of research which cut across the borders of traditional disciplines.

A Brief Chronology of NIJL

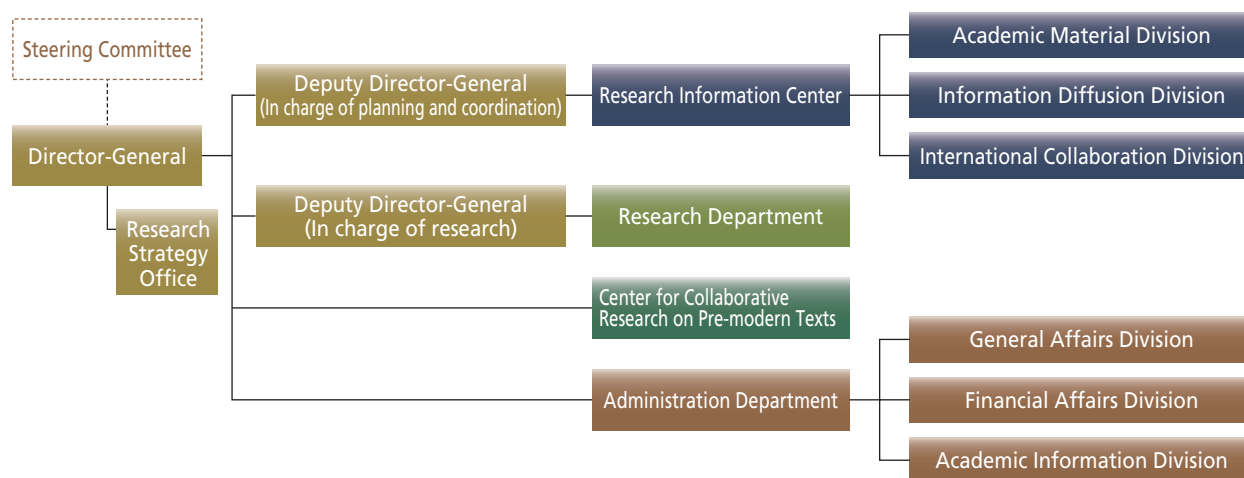
1966 December	The Science Council of Japan advises the Japanese government to establish a Center for Research in Japanese Language and Literature (tentative title)
1970 September	The Council for Science and Technology advises the minister of education to establish the Center for Research in Japanese Literature (tentative title) as a matter of urgent concern
1971 April	Funding is allocated to the Ministry of Science, Education, and Culture for the purpose of investigating the maintenance cost of facilities required for the storage of Japanese literary materials
1972 May	The National Institute of Japanese Literature (official name) is established, consisting of a management division, a documents and materials division, and a research and information division
1977 June	Inaugural opening ceremony is held
1977 July	Library services commence
1979 April	Library services division established
1987 April	On-line search engine for the Index of Microfilm Materials and Pre-modern Japanese Manuscripts Stored in NIJL made available
1992 April	On-line search engine for the Index of Articles on Japanese Literature made available
2002 November	Ceremony held in commemoration of NIJL's thirtieth anniversary
2003 April	The Department of Japanese Studies, School of Cultural and Social Studies is established at the Graduate University for Advanced Studies as a foundational institution for research
2004 April	Internal organization of NIJL is restructured in consequence of becoming a corporate member of Inter-University Research Institute Corporation, Institutes for the Humanities
2008 March	NIJL is moved to its current location in Midori-chō, Tachikawa City
2013 April	Center for Pre-modern Japanese Texts Database is established
2014 April	The Center for Pre-modern Japanese Texts Database is renamed the Center for Collaborative Research in Pre-modern Japanese Texts

About the Facility

In August 1989 and again June 1993 governmental meetings were held to discuss a proposal to transfer a number of national institutions in order to reduce the increasing congestion of people and overconcentration of national resources in the heart of Tokyo's metropolitan area. It was in accordance with decisions reached during these meetings that NIJL was moved in March of 2008 from Shinagawa Ward to Tachikawa City, which lies outside of the heart of the metropolitan area.



Organization



Steering Committee

Non-NIJL Members

Masanori AOYAGI	Director – Yamanashi Prefectural Museum of Art
Jun ADACHI	Deputy Director General - National Institute of Informatics
Yoichi IKURA	Professor - Osaka University Graduate School of Letters
Kenji UENO	Director - Yokkaichi University Seki-Kowa Institute of Mathematics
Masako EGAWA	Professor – Graduate School of Commerce and Management, Hitotsubashi University
Bunkyo KIN	Professor – Tsurumi University School of Literature
Shigemitsu KIMURA	Professor – Department of History, Faculty of Liberal Arts, Teikyo University
Yuki KONAGAYA	Professor – National Museum of Ethnology
Toshiyuki SUZUKI	Professor – Chuo University Faculty of Letters
Akira TAKAGISHI	Associate Professor – University of Tokyo Graduate School of Humanities and Sociology
Tomoko TANI	Professor – Ferris University
Hirokazu TOEDA	Professor – Waseda University Faculty of Letters, Arts and Sciences

NIJL Members

Atsushi IRIGUCHI	Professor – Research Department
Kazuo OTOMO	Professor- Research Department (Head of research)
Hiroshi OCHIAI	Professor- Research Department
Kenichi KANSAKU	Professor - Research Department (head of research)
Kenji KOBAYASHI	Deputy Director-General (in charge of planning and coordination)
Maori SAITO	Professor - Research Department (Head of research)
Keiichi TANIKAWA	Deputy Director- General (in charge of research)
Noriko YAMASHITA	Professor- Research Department
Koichi WATANABE	Professor- Research Department

Executive Staff

Director-General	Robert CAMPBELL
Deputy Director-General	Kenji KOBAYASHI
(in charge of planning and coordination)	
Deputy Director-General (in charge of research)	Keiichi TANIKAWA

Research Department

Head of research	Kazuo OTOMO
Head of research	Ken'ichi KANSAKU
Head of research	Maori SAITO

Research Information Center

Director (dual post)	Kenji KOBAYASHI
Manager of Academic Material Division	Ken'ichi KANSAKU
(dual post)	
Manager of Information Diffusion Division	Kazuo OTOMO
(dual post)	
Manager of International Collaboration Division	Maori SAITO
(dual post)	

The Graduate University for Advanced Studies (SOKENDAI) School of Cultural and Social Studies

Head of the School of Cultural and Social Studies	Noriko YAMASHITA
Chair of Department of Japanese Literature	Hiroshi OCHIAI

Center for Collaborative Research on Pre-modern Texts

Director (dual post)	Keiichi TANIKAWA
Deputy Director (dual post)	Kazuaki YAMAMOTO
General Manager	Hiroshi KAWANO

Administration Department

Director	Shigeru YAMAGUCHI
Manager of General Affairs Division	Yoshiki HAMA
Manager of Financial Affairs Division	Tomoyuki KUBOKAWA
Manager of Academic Information Division	Akihito DOI

Outline of Current Research Being Conducted at NIJL

NIJL organizes materials of Japanese literature and the related fields as the research infrastructure, and at the same time we have engaged in the following collaborative research projects by setting up joint research committee joined by outside researchers, aiming at further promotion of Japanese literature studies as part of humanities.

Foundational Research

There are currently three foundational research projects in progress, each of which contributes to the overall progress of fundamental research in Japanese literature and other relevant materials.

● "Fundamental Research into the Tales of Ise Corpus of the Tesshinsai Collection" (2016-2018)

Main Researcher: Kenji KOBAYASHI (professor at NIJL)

This is a comprehensive study of various types of materials stored in Tesshinsai Library, which is famous for its "Tales of Ise" collection donated to NIJL. We conduct research into the material in a comprehensive manner to organize it as infrastructure for wide use and utilization as research resource. Also, by releasing the results of our research through reports, we try to vitalize research on the "Tales of Ise"

● "Research into Archives and Regional Sustainability" (2016-2018)

Main Researcher: Koichi WATANABE (professor at NIJL)

We study issues related to regional sustainability in a rapidly changing regional society after the Great East Japan Earthquake, such as the redevelopment of damaged areas and the loss of regions due to declining population. This research consists of two topics: the research of system design for administrative organizations, using official documents, and the study of restoration activities, using private documents.

● "A Comprehensive Study on Searching the Historical Japanese Books Database" (2015-2023)

Main Researcher: Mitsuru AIDA (associate professor at NIJL)

In order to improve search function of the Database of Pre-modern Japanese Works that NIJL has published, for pre-modern books related to literature and history, we try to develop through concrete practices efficient methods of tagging appropriate for each style and contents of premodern books. The study is the basic research toward implementation of tagging participated by researchers from wide range of fields, and the results of this study will be incorporated in the database.

Special Research

Two special projects are being committed to promote the study of Japanese literature. All of these projects were selected through a public application process.

Public Research (general)

General public research projects, by using the various materials (microfilm documents and original manuscripts) stored at NIJL, aim at offering new perspectives on Japanese literature and related disciplines which are both creative and broad in scope. These projects encourage the involvement of young researchers.

● "Fundamental and interdisciplinary research for utilization of military and related works as historical documents" (2018-2020)

Main Researcher: Yasushi INOUE (professor at National Defense Academy of Japan and visiting researcher at NIJL)

Among military chronicles from the early modern era, there are many materials that are useful for elucidating facts and image formation of historical incidents. By conducting complete enumeration of Hideyoshi-related war chronicles and their materials, we try to clarify values of the materials, and by comparing them with related materials including those on Nobunaga, Battle of Sekigahara, and the Siege of Osaka as appropriate, we aim at presenting a model of review method for efficacy of the war chronicles from the early modern era as historical materials.

Public Research (conducted by young researchers)

Public research projects conducted by young researchers aim at offering innovative perspectives in the field of Japanese literature by means of clearly-defined objectives and appropriate research methods.

● "Research into a Regional Poet Society in the Last Days of the Shogunate Regime" (A Case of the Saga Clan) (2017-2018)

Main Researcher: Makoto MITSUMATSU (lecturer at Saga University and visiting researcher at NIJL)

In the current academic community, the popularity of Japanese poetry in the Saga Clan (including its sub-clans) during the later early modern period is not recognized well. However, as old researches show, the culture of Japanese poetry spread with the Ogurumasha, a poetry circle formed with the lead of the clan centered, and Wagaku-Ryo, the school of the clan, as a base at the end of the Edo period. This collaborative research aims to clarify the activities of the poet society in the Saga Clan at the end of the Edo period and identify the features on a national scale.

Project to Build an International Collaborative Research Network for Pre-modern Japanese Texts

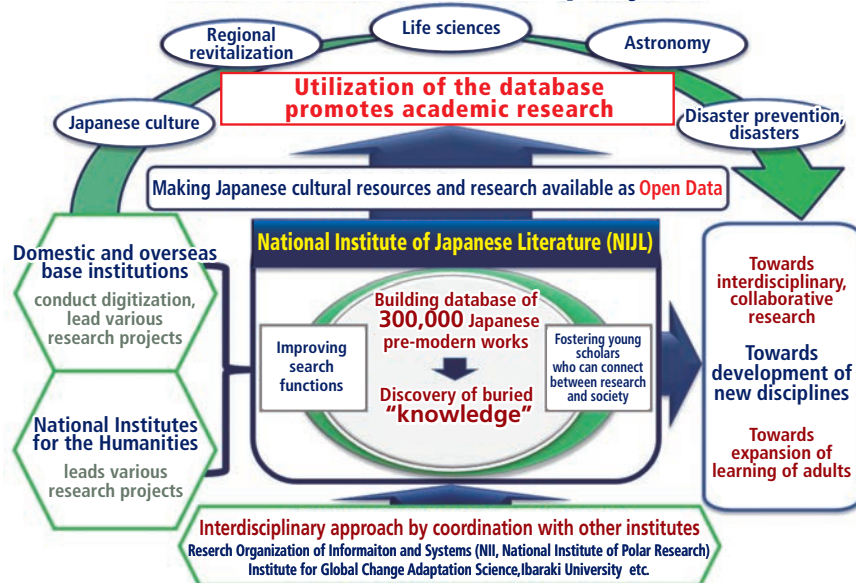
(abbreviation: NIJL-NW project)

This project, headed by NIJL, is aimed at digitizing pre-modern Japanese works that are approximately 300,000 items by collaborating with universities and others both inside and outside Japan, creating a research base called the "Database of Pre-modern Japanese Works" that allows us to search images as desired by incorporating these images into our bibliographical database that we have built, and constructing an international collaborative research network by using these images.

Such digitizing pre-modern Japanese works will be useful measures against the cultural property crisis (damage/degradation of original materials, loss by natural disaster, etc.) and will lead to contribution to succession of cultural assets to the future.

We will promote collaborative researches under this project on an international scale including the fields of not only humanities but natural science in the manner of a harmonic merger between humanities and sciences by utilizing the database.

Scheme of NIJL-NW project



Implementation Plan

The scheduled period of this project spans ten years, from FY 2014 to FY 2023. We are working on promoting collaborative researches on an international scale, and also expanding the "Database of Pre-modern Japanese Works" by coordinating with the themes of such collaborative researches.

The images of pre-modern Japanese works will be collected classified by fields and scheduled to be made public one after another.

① Construction of the Database of Pre-modern Japanese Works

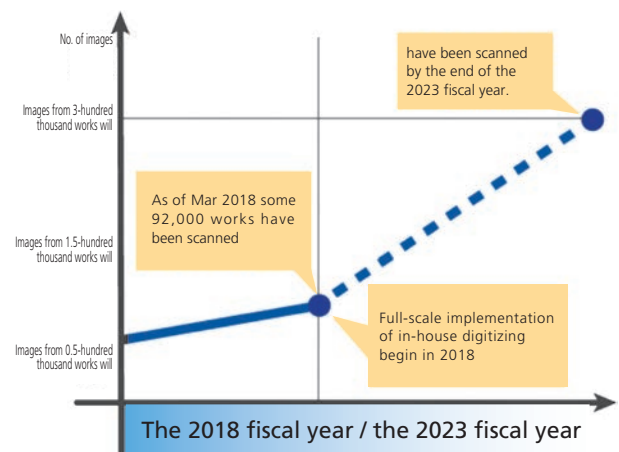
- ◆ Scanning the 300,000 works
- ◆ Operation of the Database of Pre-modern Japanese Works
- ◆ Improvement of the search function/Readiness for multiple languages

② Promotion of international collaborative research

- ◆ Creation of interdisciplinary research
- ◆ Promotion and establishment of "Comprehensive Bibliographical Studies"

③ Construction of an international collaborative research network

- ◆ Organization of joint research system with cooperative institutions
- ◆ Construction of leading joint research model



NIJL, base universities, and research institutions digitize pre-modern Japanese works mainly belonging to the fields of medicine and science, as well as industry, martial arts, and religion. We are promoting image collection classified by highly specialized fields uninterruptedly.

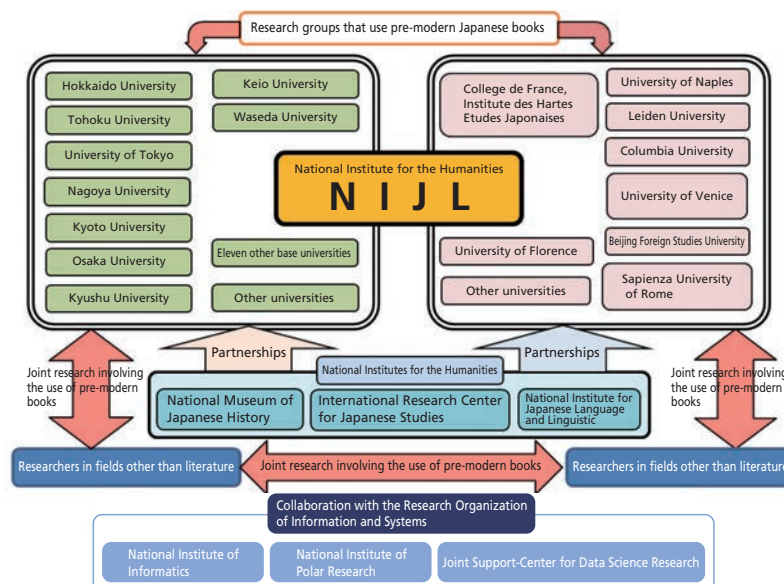
Images will be sequentially made public from April of the next fiscal year.

Project Plan

The Center for Collaborative Research in Pre-modern Japanese Texts was established within NIJL in April, 2014, as a means of carrying out this project.

To this same end, NIJL works with a number of domestic organizations belonging to the National Institutes for the Humanities, twenty domestic associated base universities and research institutions in Japan and other countries, along with the National Institute of Informatics and the National Institute of Polar Research, as well as a number of foreign research institutions.

Regarding the internal operations of the Center for Collaborative Research in Pre-modern Japanese Texts, it is run by a number of committees: the center steering committee, the network of pre-modern Japanese texts committee, the international collaborative research network committee, and the associated base universities and institutions communication committee. This project is made possible by continued cooperation with experienced scholars and the community of researchers at large. The NW project implementation committee was established in NIJL, under the direction of the center steering committee to organize our system for the project. It aims to facilitate the understanding of all faculty members with regard to this project as well as clarify their roles and responsibilities.



International Collaborative Research Network Diagram

Fiscal 2017 Digital Archive Portfolio

● Data from base universities: Digital images

Tohoku University (medicine/science), University of Tsukuba (medicine/science), University of Tokyo (medicine/art), Nagoya University (thought/literature), Kyoto University (medicine), Osaka University (religion/history/medicine), Kobe University (medicine/geography etc.), Hiroshima University (literature/thought/language), Keio University (medicine/literature), Kansai University (literature/history)

● Data pertaining to specialized areas of medicine, science, etc.: Digital images

Doctor Oe History Museum/Murakami Archive, Branch of Nakatsu City Museum of History and Folklore (medicine), National Astronomical Observatory of Japan (science), Hirosaki City Public Library (science/industry/topography, etc.), Tokyo University of Marine Science and Technology Library (industry), TOKYO SHOSEKI CO., LTD. Library for textbook, Tosho Bunko (education), Archives and Mausolea Department, Imperial Household Agency (history), Tokyo University of the Arts Library (art), Senshu University Mukai Nobuo Bunko (literature), Ibaraki University Library (history), Jissen Women's University Library (literature), Dr. Mitsutoshi Nakano (literature/thought/learning), Ikenoya Bunko (literature), National Institute of Japanese Literature (literature/history)

● Verification test of in-house digitizing

KEN-IKAI Library (medicine), TOKYO SHOSEKI CO., LTD. Library for textbook, Tosho Bunko (education), Tokyo University of the Arts Library (art), Dr. Mitsutoshi Nakano (literature), Prof. Satoru Sato (literature), Tokei Shrine (literature), Otani University Library (religion), Kansai University Library (literature), National Institute of Japanese Literature (literature)

● Digital images from microfilms

Archives and Mausolea Department, Imperial Household Agency (literature/history, etc.) and National Institute of Japanese Literature (literature)

● Provision of existing images

Dr. Yoshinaga Koizumi (Ouraimono Club) (education), Tokyo University of the Arts Library (art)

Database of Pre-modern Japanese Works





The "Database of Pre-modern Japanese Works", which is the basis for the NIJL-NW project, was released to the public in April, 2017 on a trial basis and released formally on October 27, 2017. The database includes not only works of literature but also pre-modern documents related to medicine and science; therefore, images of approximately 80,000 works can be viewed as a study base for promoting multidisciplinary research involving researchers in fields outside of the humanities. This database will be expanded to include 300,000 works through collaboration with universities in Japan and other countries.



[Website] <https://kotenseki.nijl.ac.jp/>

Summary and features of the Database of Pre-modern Japanese Works

This database can be used as the only one portal site to see abundant bibliographic data that have been accumulated by NIJL for a long time and also digital images of pre-modern Japanese works in the possession of various organizations in Japan and other countries.

Point 1 Easy to find	Point 2 Easy to Cite	Point 3 Easy to Use
<p>As well as searches using titles or keywords, for example, a wide range of search options is available including image tags, full texts recommended keywords and pickup contents!</p>  <p>Top Page</p> <p>https://kotenseki.nijl.ac.jp/</p>	<p>International identifiers, DOI (Digital Object Identifier) attached to electronic data are used to guarantee permanent access and allows you to cite anytime!</p> <p>DOI</p> <p>https://doi.org/10.20730/200021913</p> <p>Conversion</p> <p>新日本古典籍 総合データベース</p> <p>http://kotenseki.nijl.ac.jp/biblio/200021913</p> <p>DOIs remain the same even if the database URL changes, ensuring that links are not broken.</p> <p> https://www.doi.org/</p>	<p>IIIF (International Image Interoperability Framework), a new digital archive standard is used, facilitating sharing or reusing the images among different digital archives!</p>  <p>Image Viewer</p> <p> http://iiif.io/</p>



Refer to the pamphlet before use.
"Pamphlet for Database of Pre-modern Japanese Works (with quick guide)"
The pamphlet is available here :
<http://www.nijl.ac.jp/pages/cijproject/>

Image sample from the Database of Pre-modern Japanese Works



Nara e-hon/Taishokan

[Naraehon/Taishokan/Details of date unknown]

One of "Nara e-hon" that contain pictures made in the late Muromachi period to the early Edo period.

This image described the story of Kamatari Fujiwara in full color with use of paints of gold, silver, vermillion, and more.

● DOI : <https://doi.org/10.20730/200016463>

Working towards an Open Data

In order for our pre-modern Japanese Works to be used more freely and widely, we are making the data more readily available. As part of the project, the following three datasets are available to the public on the website of the Center for Open Data in the Humanities (CODH) of the Joint Support-Center for Data Science Research, through collaboration with CODH and the National Institute of Informatics, the Research Organization of Information and Systems.

All of the data are made available under the license of Creative Commons Attribution-Share Alike (CC BY-SA) ; therefore anyone can use the data if he/she agrees to the conditions.

NIJL open data website: http://www.nijl.ac.jp/pages/cijproject/data_set_list.html

● Dataset of Pre-modern Japanese Text (PMJT)

【No. of pieces】 1,767 items

Japanese works such as "the Tale of Genji" and "the Tale of Ise" as well as pre-modern documents of various fields such as medicine, science and industry are included.

【Contents】 ① Pre-modern Japanese books images
② Bibliographies
③ Texts
④ Tag data

【Website】 <http://codh.rois.ac.jp/pmjt/>

● Dataset of PMJT Character Shapes

【No. of data】 Character type: 3,999 kinds, Character: 403,242

※ As of March 2018

Character data is collected from 15 pieces of materials as follows:

"Koushoku Ichidai Otoko", "Oraga Haru", "Ugetsu Monogatari", "Tosei Ryori", "Yosan Hiroku", "Manbo Ryori Himitsubako", "Zenbu Ryorisho", "Ryori Monogatari", "Katemono", "Nichiyosoza So Fujinochinkyaku Sokusekihocho", "Ryori Kata Kokoroenokoto", "Shimpen Ikoku Ryori", "Ryori Hidensho", "Butsurui Shoko (owned by National Institute for Japanese Language and Linguistics) , and "Hiyokurenri Hananoshimadai (owned by National Institute for Japanese Language and Linguistics)"

【Contents】 ① Original character corrected images
② Character coordinates
③ Character images
④ Work reports

【Website】 <http://codh.rois.ac.jp/char-shape/>

● Dataset of Edo Cooking Recipes

【No. of pieces】 107 kinds

There is a modern Japanese translation for 40 kinds including 15 kinds having modern recipe data.

【Contents】 ① Original book images
② Reprinted texts
③ Modern Japanese translation
④ Modern recipe data

【Website】 <http://codh.rois.ac.jp/edo-cooking/>

The dataset is also available on the website of "Cookpad Edo Dishes."



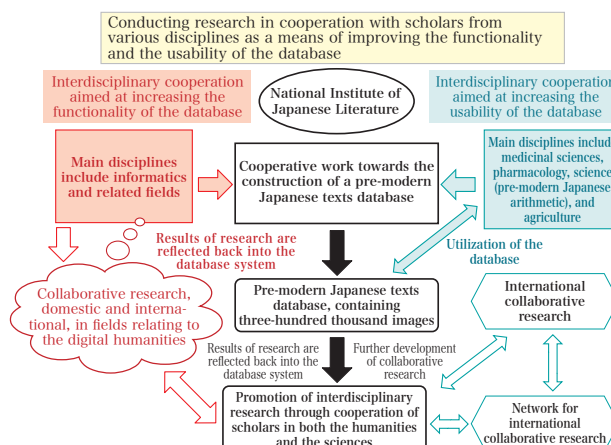
One scene from Ise Monogatari Emaki (NIJL, Tesshinsai Collection)

DOI : <https://doi.org/10.20730/200024363>



Collaborative Research

The main objective of this project is to bring to life the vast collection of pre-modern Japanese works stored in NIJL and others. This will be achieved through the construction of a research network that connects researchers from various disciplines, both here in Japan and abroad. This project aims at constructing, in cooperation with a number of domestic universities, a database which will digitalized images of the entirety of collection of three-hundred thousand pre-modern Japanese works, a collection which includes material from all disciplines. In addition, we will implement advanced collaborative research projects that will involve the participation of scholars from various fields.



International Collaborative Research

Projects embraced under this category are headed by foreign scholars who, by focusing on a comprehensive theme, promote broader perspectives in the collaborative utilization of pre-modern Japanese works.

- **"Installation and Curation of Pre-modern Japanese books owned by C.V.Starr East Asian Library, University of California, Berkley"** (FY 2018 - FY 2020)

Representative : Jonathan ZWICKER, (Associate Professor, Department of East Asian Languages and Cultures, University of California, Berkeley)

- **"Interaction of Knowledge from the Medieval to the Early Modern Period"** (FY 2018 - FY 2020)

Representative : Didier DAVIN (Associate Professor, Research Department, National Institute of Japanese Literature)

- **"Arising from Words and Images : The Body in Traditional Performing Arts"** (FY 2018 - FY 2020)

Representative : Bonaventura RUPERTI

(Professor, Department of Asian and North African Studies, Ca' Foscari University of Venice)

Interdisciplinary Collaborative Research

[Research on Tourism Resource Documents]

Chief: Keiichi TANIKAWA, Professor, Research Department, National Institute of Japanese Literature

- **"Compilation of Digital Tsugaru Fudoki"** (FY 2017 - FY 2019)

Representative: Hisafumi TAKIMOTO (Professor, Faculty of Education, Hirosaki University)

- **"Research into the Method of Digital Restoration of Epigraphs and Its Practice"** (FY 2017 - FY 2019)

Representative: Hideyuki UESUGI (Visiting Researcher, Center for Collaborative Research on Pre-modern Japanese Texts, National Institute of Japanese Literature)

《Study Contents》



- ① Shooting images with shadow emphasized using slanting light from multiple angles
- ② Image registration
- ③ Registration of materials to be used for searching, shapes of tombstones, levels of weathering, positional information as well as images
- ④ Search and call of image processing procedure for each tombstone from registered information
- ⑤ Execution of image processing software based on the image processing procedure
- ⑥ Display of processed images on a Web browser

- **"Research into the Method of International Diffusion of General Regional Information by Means of GIS"** (FY 2017 - FY 2019)

Representative: Kazuaki YAMAMOTO (Specially-appointed Professor, Center for Collaborative Research on Pre-modern Japanese Texts, National Institute of Japanese Literature)

【Research on Disaster-response Measures for Protecting Books】 Chief: Kazuaki YAMAMOTO, Specially-appointed Professor, Center for Collaborative Research on Pre-modern Japanese Texts, National Institute of Japanese Literature
● “Establishment of the Foundation for Research into Reduction of the Effects of Natural Disasters Based on Astronomical and Climatic Information” (FY 2017 - FY 2019)

Representative: Ryuho KATAOKA (Associate Professor, National Institute of Polar Research)

● “Creation of New Study Field for Natural Disaster Reduction and Adaptability to Climate Change by Utilizing Historical Materials ” (FY 2017 - FY 2019)

Representative: Makoto TAMURA (Associate Professor, Institute for Global Change Adaptation Science, Ibaraki University)

【Research into the Japanese Diet and Traditional Medicine】 Chief: Kenji KOBAYASHI, Professor, Research Department, National Institute of Japanese Literature

● “Research into the Revival and Use of Cooking Methods and Seasonings” (FY 2016 - FY 2019)

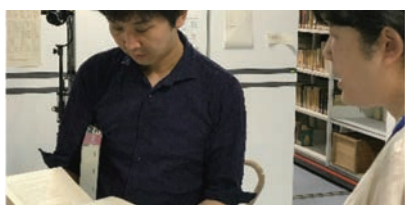
Representative: Yukihiro KOHMATSU (Senior Researcher, Ritsumeikan Global Innovation Research Organization, Ritsumeikan University)

● “Study of Annotation Making on Nishikie and Others” (FY 2017 - FY 2019)

Representative: Akihiko KOBAYASHI, Director of Ajinomoto Dietary Culture Library

Kazuaki YAMAMOTO, Specially-appointed Professor, Center for Collaborative Research on Pre-modern Japanese Texts, National Institute of Japanese Literature

《Study Scene》



Astronomical/Climatic information



Natural disaster reduction
Adaptability to climate change



Restoration of seasoning

Leading Collaborative Research among NIJL Members

Two collaborative research projects, each funded by Grants-in-Aid for Scientific Research and other external grants, are currently being conducted in order to develop a field of “comprehensive bibliographic studies.”

● “Towards a Restructuring of Bibliography and Philology” (FY 2015 - FY 2019)

Representative: Keiichi TANIKAWA (Professor, Research Department, National Institute of Japanese Literature)

● “Comparative Study of Japanese Classics” (FY 2017 - FY 2019)

Representative: Hiroshi OCHIAI (Professor, Research Department, National Institute of Japanese Literature)

Interinstitutional Collaborative Research

NIJL is currently heading an interdisciplinary research effort entitled “Wide-range Collaborative Foundational Research Project” which aims at adopting an interdisciplinary perspective to construct a new field of “comprehensive bibliographical studies.” Three institutions belonging to the National Institutes for the Humanities, namely, the National Museum of Japanese History, the National Institute for Japanese Language and Linguistics, and the International Research Center for Japanese Studies, are cooperating with NIJL to accomplish this aim.

● “Development of a Field of ‘Comprehensive Bibliographical Studies’ from an Interdisciplinary Perspective” (FY 2016 - FY 2021)

Representative: Keiichi TANIKAWA (Professor, National Institute of Japanese Literature)

Individual Research Units

- “Interdisciplinary Collaborative Research into “Engishiki”, an Pre-modern Encyclopedia”

Representative: Shigeji OGURA (Associate Professor, National Museum of Japanese History)

- “Refining the Corpus of Historical Japanese with Information on Notation and Bibliographical Form”

Representative: Tomokazu TAKADA (Associate Professor, National Institute for Japanese Language and Linguistics)

- “Literary Legacies of Kirishitan Culture: Missionary Writings in the Vernacular”

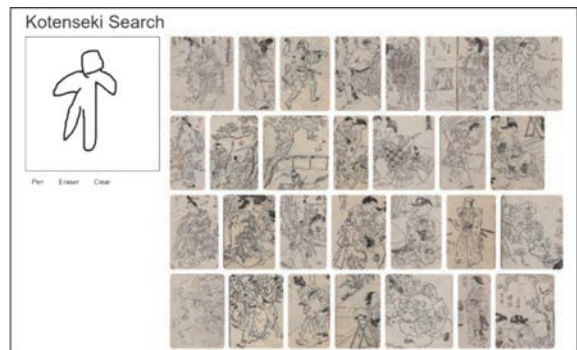
Representative: Shōichi INOUE (Professor, International Research Center for Japanese Studies)



Collaborative Research for Technical Development

There are currently eight collaborative projects aimed at improving the search functions of NIJL's databases.

- "Comprehensive Research into the Detection of Keywords within that Text" (Future University Hakodate)
- "Examination of introducing multilingual system" (Ritsumeikan University)
- "Detection of Illustration as Sophisticated Database Search Functions" (National Institute of Informatics)
- "Cooperation in the Conversion of Images into Texts in the 'Project to Build an International Collaborative Research Network for Pre-modern Japanese Texts'" (Toppan Printing Co., Ltd.)
- "Collaborative Research toward the Development of a Book Scanner for Old Documents and Pre-modern Japanese Texts" (PFU Limited)
- "Development of Collaborative Text Composition Tools"
- "Basic Research into Information Analysis of Pre-modern Japanese Works by High-Dimensional Processing of Multi-Dimensional Optical Information" (NARA INSTITUTE of SCIENCE and TECHNOLOGY, etc.)
- "Introduction of TEI (Text Encoding Initiative)" (International Institute for Digital Humanities, University of Tokyo, etc.)



Demonstration of picture search released now on the Web site as a result of collaborative research with National Institute of Informatics

http://lab.nijl.ac.jp/sketch_search/

Dissemination of Research Result and Public Relation Activities

In order to increase public awareness of this project, we are carrying out press releases, live stream broadcasting of an international conference, and promoting the project through activities involving the participation of the public.

We are actively conducting press releases about our research results and also results of collaborative researches.

《Press Releases Conducted in 2017》

May 16 (Tue), 2017	Release of "Edo no Ryorisho" owned by Ajinomoto Foundation for Dietary Culture (Ajinomoto Foundation for Dietary Culture)
May 24 (Wed), 2017	Conclusion of agreement with Ibaraki University ICAS (Ibaraki University)
June 7 (Wed), 2017	Digitization verification test with transportable book scanner (PFU Limited)
September 13 (Wed), 2017	Collaborative project with Isetan Mitsukoshi Holdings Ltd. (reproduction of Edo dishes)
September 20 (Wed), 2017	Observations of Red Aurora over 1770 Kyoto Help Diagnose Extreme Magnetic Storm (National Institute of Polar Research and Graduate University for Advanced Studies) [Paper Presentation]
October 27 (Fri), 2017	Formal release of "Database of Pre-modern Japanese Works" (Press interview held at NIJL's main conference room on the same day)
December 26 (Tue), 2017	Detailed analysis of "Hachioji meteorite" (National Institute of Polar Research, National Museum of Nature and Science, Kyushu University, and Graduate University for Advanced Studies)
January 17 (Wed), 2018	Holding of "Classics: Aurora Hunter 3" (National Institute of Polar Research, and Graduate University for Advanced Studies)
January 25 (Thu), 2018	Holding of ICAS collaborative research symposium (Ibaraki University)

We conducted press release about the all-time greatest magnetic storm that was explicated from the aurora pictures and diaries in the Edo period as a result of interdisciplinary collaborative researches with the National Institute of Polar Research that is an organization researching into a different field. (September 20 (Wed), 2017 released)

This outcome was published on "Space Weather", an academic journal of the American Geophysical Union, and it was also largely featured on "Kyoku", a public relation magazine of the National Institute of Polar Research.



Thesis published on Space Weather



"Kyoku" No. 17, Winter edition 2018, a PR magazine of National Institute of Polar Research

- "Database of Pre-modern Japanese Works" has been formally released since October 27, 2017 as a portal site of pre-modern Japanese works. Press release was held at the NIJL's main conference room on the same day to explain the significance and function of the database. A new function to cooperate with the Database of Pre-modern Japanese Works was added to CiNii Books of the National Institute of Informatics, and press releases at both NIJL and the National Institute of Informatics were conducted for the function.



Press release in NIJL's main conference room

- (October 27 (Fri), 2017 released)
- We cooperated with Isetan Mitsukoshi Holdings Ltd. in reproducing and arranging Edo dishes in a campaign (period: September 20 (Wed) through October 3 (Tue) 2017), and performed collection of applicable parts from cookbooks of the Edo Period, reprinting of the contents, translation the texts into current Japanese, and description of explanation. We also held seminars in connection with it, and exhibited our pre-modern collection.



Exhibition of pre-modern Japanese works on the food floor of Nihombashi Mitsukoshi Main Store

(September 13 (Wed), 2017 released)

Symposium, etc. sponsored by NIJL (overseas events held)

- We held the 3rd International Conference on Pre-modern Japanese Texts (July 29 (Fri) through 30 (Sat), 2017) (sponsored by NIJL). Abstracts of the presentations were put on our website in Japanese and English, and actual scenes were distributed live on the Internet.



The 3rd International Conference on Pre-modern Japanese Texts

- We sponsored and held "The near Future of Pre-Modern Japanese Text Research" at the site as well as EAJS 2017 Conference in Lisbon (Lisbon, 30 Aug - 2 Sep).



The near Future of Pre-Modern Japanese Text Research

Other activities

- The Deputy-director of the center, Yamamoto, participated in a workshop at the booth of "Ultra Reprinting by Everyone" in Niconico Chokaigi 2017 (April 30, 2017 at Makuhari Messe).



Niconico Chokaigi 2017

- We explained "Database of Pre-modern Japanese Works" and the progress of the NIJL-NW project including introduction of the open data set at the 28th EAJRS Conference (September 13 (Wed) through 16 (Sat), 2017 at Oslo, Norway).



28th EAJRS Conference

- We participated in the communication booth for the first time as the National Institute of Japanese Literature in the 19th Library Fair & Forum (November 7 (Tue) through 9 (Thu), 2017 at PACIFICO Yokohama). We introduced the Database of Pre-modern Japanese Works and the deliverables of the NIJL-NW project (such as open data), and approximately 800 people in total visited our booth for 3 days.



Library Fair & Forum

- We held "Open Data Workshop on Pre-modern Text - Cut and Paste, Why Don't We Collect Something from Pre-modern Japanese Works?" in the Cultural Exchange Center of Osaka City University at Umeda, Osaka City on December 8 (Fri), 2017. (mainly sponsored by NIJL, and cosponsored by National Diet Library, National Institute of Informatics, Joint Support Center for Data Science Research, etc.)



Open Data Workshop on Pre-modern Texts

- The "Classics: Aurora Hunter 3" workshop was held with participation of the public. Many citizens applied to participate. (February 18 (Sun), 2018; hosts: NIJL, National Institute of Polar Research and the Center for the Promotion of Integrated Sciences, SOKENDAI)



Classics: Aurora Hunter 3

- Two issues (nos. 8 and 9) of a newsletter dedicated to introducing this project, entitled "Fumi" were published. These issues are available from our website in the form of pdf files.



URL: http://www.nijl.ac.jp/pages/cijproject/newsletter_fumi_new.html

Activities Overview

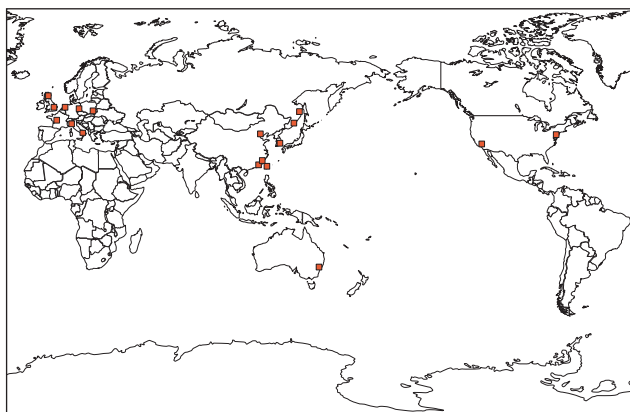
The aim of the work undertaken by the NIJL

The institute performs specialized research studies of Japanese literature and related materials that have been collected domestically and overseas. It also creates collections using photographs and originals, organizes and preserves sources and bibliographies that have been obtained, and maintains a base for the study of Japanese literature and related fields. It also presents these things in various ways to domestic and overseas users, and passes them along to society through means such as exhibits and lecture meetings.

1 Research and Collection

In collaboration with researchers from universities throughout Japan, institute personnel travel to the sites of collections of Japanese literature and related original materials (such as manuscripts and printed editions), and engage in research with a bibliographical focus.

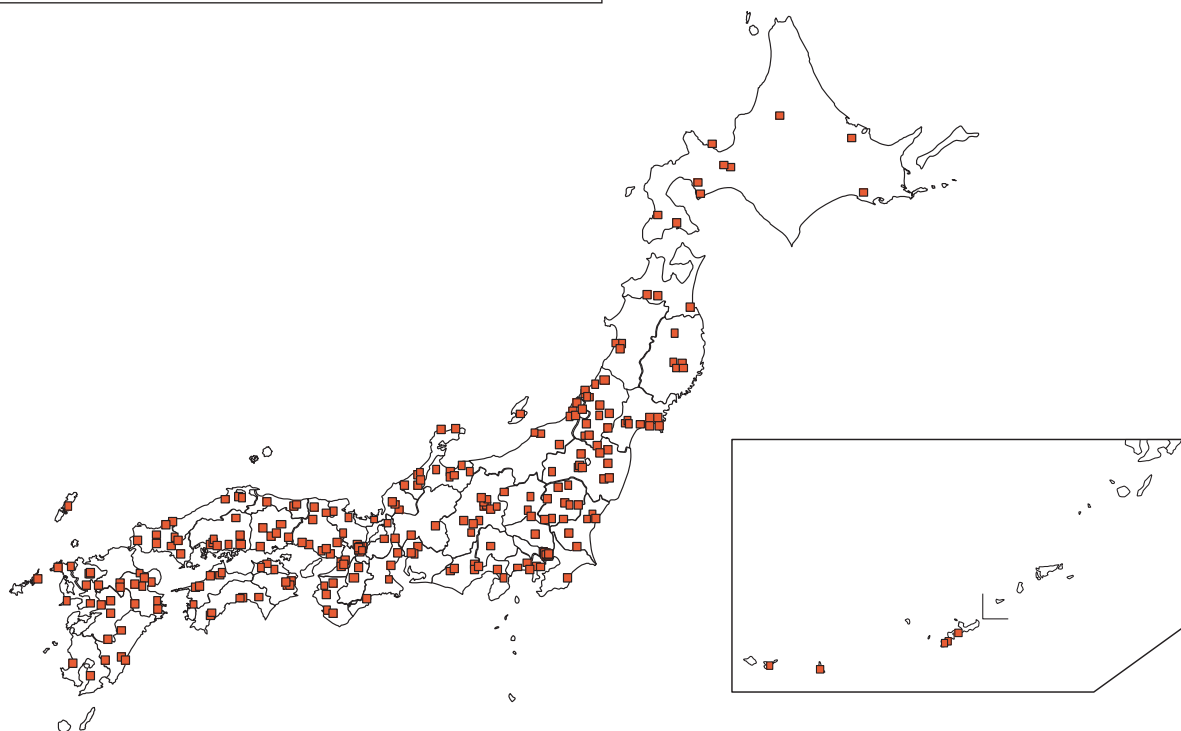
In conjunction with this research, original materials stored in Japanese libraries and private collections are collected through full-volume photography as micro negative film or digital images, and made available to the public.



Research and Collection Numbers up to the Present

Research	Japan	1,035 locations	418,197 items
	Overseas	67 locations	16,367 items
	Total	1,102 locations	434,564 items
Collection	Japan	384 locations	208,491 items
	Overseas	13 locations	1,518 items
	Total	397 locations	210,009 items

The number of Japanese literatures and their related materials scattered throughout Japan is assumed to be approximately 1 million pieces, and about 20% of them can be read or viewed through films, images, or originals at NIJL at present.



■ List of Research Locations in 2017

Hokkaido / Tohoku Region

Yonezawa City Library

Kanto Region

Sonkeikaku Library

The Imperial Household Agency-
Archives and Mausolea Department

Saimyoji Temple

Seisa Latoratory
(Mayama Seika Bunko)

Chubu Region

Suwa Municipal Museum

Ikeda Saburo

Rangyu Museum

Kinjyo Gakuin University Library

Nagoya City Museum

Kinki Region

Zuikoji Temple

Kyoto Women's University
(Roan Bunko)

Nakanosho Niigawa Family

Osaka Temmangu Shrine Bunko

Kaizuka Gobō Gansenji Temple

Chugoku / Shikoku Region

Tottori Prefectural Museum
(Kyusho Kaku Library)

Tezen Museum

Hikari City Cultural Center

Zentsuji Temple

Kamada Benefit Society Museum
of Local History

Uwajima Date Cultural Property
Association

Ozu City Library

Kochi Castle Museum of History

Kyushu / Okinawa Region

Amakusa Ueda Family

Suwa Jinja Shrine (Suwa Bunko)

Early-modern

Hakodate City Central Library

Hirosaki City Public Library

Sakata City Kokyu Bunko

Aizu Wakamatsu City Library

Yamada Shunji

Seisa Latoratory
(Mayama Seika Bunko)

Shizuoka University Library
(Collection of former book-lending shops)

Osaka University Library
(Ninjoji Bunko)

Osaka Prefecture University Library and
Science Information Center/Modern Collection

Nagasaki Prefectural Nagasaki
Library

■ List of Collection Locations in 2017

Hokkaido / Tohoku Region

Miyagi Prefectural Library
(Date Bunko)

Kanto Region

The Imperial Household Agency-
Archives and Mausolea Department

Hōsei University (Ko-zan Bunko)

Chubu Region

Niigata University Library
(Sano Bunko)

Toyama City Library
(Yamada Yoshio Bunko)

Kinki Region

Kyoto City Library of Historical
Documents

Kyoto Women's University
(Roan Bunko)

Yomei Bunko

Kinjyo Gakuin University Library

Soai University Library
(Shunsho Bunko)

Chugoku / Shikoku Region

Tottori Prefectural Library

Yamaguchi University Library
(Seisokudo Library)

Zentsuji Temple

Uwajima Date Cultural Property
Association

Ozu City Library

Ehime University Library
(Suzuka Bunko)

Kochi Castle Museum of History

Kyushu / Okinawa Region

Yutokuinari Shrine
(Nakagawa Bunko etc.)

Hizen Shimabara Matsudaira
Bunko

Matsura Historical Museum

Kitsuki City Library

Early-modern

Hachinohe City Public Library

Yamanashi University Library
(Kindai Bungaku Bunko)

Osaka University Library
(Ninjoji Bunko)

Osaka Prefecture University Library and Science
Information Center (Modern Collection)

Yamada Shunji

Archive

Sanada Treasures Museum
(Sanada Family Collection)

Egawa Bunko

※ Honorific titles of owners
omitted

2 Public Inspection of Documents

Allowing perusal of documents and providing material copies of the same are services offered by the institute's library. Through the interlibrary access (mutual use) system, it is possible for users even from remote locations to utilize these and other services. Those who are not affiliated with any university can request material copies directly via mail, fax, or E-mail. In addition, collection related surveys done by telephone and reference questions submitted through writing, fax or e-mail are also accepted.



Library

Library Guide

Service Hours	Opening Hours	Weekdays	9:30 ~ 18:00 (Historical resources and valuable materials are available only between 9:30 ~ 17:30)
		Saturdays	9:30 ~ 17:00 (Historical resources and valuable materials are available only between 9:30 ~ 16:30)
	Closed Stack Requests	Weekdays	9 : 30 ~ 12 : 00、 13 : 00 ~ 17 : 00
		Saturdays	9 : 30 ~ 12 : 00、 13 : 00 ~ 16 : 00
	Copy Services		9 : 30 ~ 16 : 00
Closed			<ul style="list-style-type: none"> • Sundays, holidays, • New Year's holidays (December 26 - January 5) • Archiving environment maintenance period (May 1 - May 5) • Collection inspection period (February 25 - March 2) • 2nd and 4th Wednesdays • Summer holidays (August 13 - 15) ※ The institute may close for other reasons. Please check the posted information and the institute's Web page.
Services	Reader Service	Microfilms, Japanese rare books (manuscripts, block-print editions) , historical resources, printed books, photographic facsimiles, local history books across the country, and serial publications (Prior appointment is needed to view historical resources, rare books, special collections and books on loan to the library.)	
	Photoduplication Services	Electronic photocopying (including photocopying using a reader printer) , positive films (however, historical resources are not allowed to be copied)	
	Photographing	Historical resources and other materials for which electronic photocopying is not possible	
	Lending	Overnight lending of book printouts (some books excluded)	
	Lending for Exhibitions	Lending for exhibitions at libraries, archives, museums, etc.	
	Reference Research	Accepting and responding to questions and requests for document searches	
	Interlibrary Loan	Photocopying and lending through the system of mutual cooperation among libraries	
Inquiries	Phone	Usage: +81-50-5533-2926, First Information Services Section 1 Interlibrary Loan (ILL): +81-50-5533-2926, First Information Services Section 1 Historical materials: +81-50-5533-2930, First Information Services Section 2 Material publishing: +81-50-5533-2930, First Information Services Section 2	
	F A X	042-526-8607	
	E-mail	etsuran@nijl.ac.jp	

Collection Materials

Materials Type			No. of items, etc.	No. of books, etc.
Microfilm materials	Microfilm	Japanese Literature	193,768items	42,527reels
		History	202items	6,308reels
	Microfiche	Japanese Literature	16,667items	57,358sheets
	Book printouts	Japanese Literature	—	75,190volumes
		History	—	11,196volumes
Books	Manuscripts and editions		17,867items	59,694volumes
	Printed books, photographic facsimiles, etc.		—	187,846volumes
	Serial publications		9,079publications	—
Historical Materials in the Collection			493items	about 520,000 items
Historical, etc., Materials on Loan to the Library		Japanese Literature	11 items	9,537volumes
		History	17items	6,847items

Representative Collection Materials

Materials Related to Japanese Literature

【Rare Books】

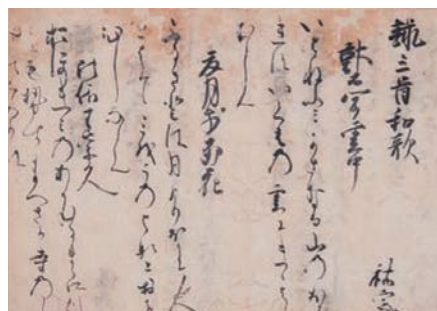
Kasuga Kaishi (Important Cultural Property) , a 1682 Aratoya edition of Koushoku Ichidai Otoko, an illustrated old print edition of Soga Monogatari, a Kamakura era manuscript of Shin Kokin Wakashu, naraehon of the Utsuho Monogatari, Shin Kokin Wakashu Senka Soko, and a Kamakura period edition of The Tale of Genji, Chapter 16 and 206 other items

【Special Collections】

Kyoichi NISHISHITA's formerly owned “Kokin-Wakashu (Collection of Ancient and Modern Times)” and related works (Hatsukari Collection) , author Shinichiro NAKAMURA's formerly owned anthology of Chinese poetry from the Edo and Meiji periods (Japan Chinese Poetry Collection) , “Essays in Idleness” and other works (Isao Kojo Collection) , a collection centering on the “Shin Kokin Wakashu (New Collection of Ancient and Modern Times)” (Kaifurogetsu Collection) , diaries, records, cultural research, literature, and other art-related documents from the Tayasu Tokugawa family (Tayasu Tokugawa family materials (Denpan Bunko, etc.)) , Meiji era politician Ukai Ikujiro' s collection (Ukai Bunko) , and a collection including works by Yamaga Soko (Yamaga Bunko) , The Tales of Ise and related works (Tesshinsai Bunko) and 23 other items

【Materials on Loan to the Library】

Eleven collections, including six items from the collection of Motoomi KANEKO 104 items from the collection of Yoichi MATSUNO, 145 items from the ancient manuscript fragment collection of Yasuyoshi SAKATA; 50 boxes containing 6,690 pages from the Masuda collection.



Kasuga kaishi (National Institute of Japanese Literature Collection)



Stack room

Materials Related to History

The Historical Materials collection focuses on the early modern and modern periods, and includes over 520,000 items. Nearly every region of Japan is covered.

The early modern archives feature a large number of works dealing with commoners (such as Owari no Kuni Nagoya Moto Zaimokucho Inuyamaya Kandoke, and Shinano no Kuni Takaigun Higashi Ebemura Yamada Shozaemonke) , but they also contain works dealing with military families (such as Shinano no Kuni Matsushiro Sanadake, Awa no Kuni Tokushima Hachisuka, and Yamashiro no Kuni Yodo Inabake) , noble families (such as Yamashiro no Kuni Kyoto Sanjo Nishike) and religion (such as Yamashiro no Kuni Kadonogun Saga Tenryuji Tacchu Rinsenji).

As for the modern archives, they contain documents (such as Aichi Prefectural Office documents and Okayama, Hiroshima, and Tottori Prefectural and Municipal documents) dealing with prefectural, municipal and village government-level matters.

3 Public Presentations

The NIJL contributes to society by widely publicizing the results of its research via exhibitions, lectures, symposiums and seminars.

Exhibitions

The institute hosts exhibitions in its first-floor exhibition room on the basis of the results of investigation researches and collaborative researches about materials.

Planned Exhibitions for FY 2018

Special exhibition

"Medieval Period with <Prayer> and <Salvation>"

Planned to run from October 15 to December 15, 2018

Buddhism originally coming from foreign country became established in Japan as national religion by connecting to the royal authority in ancient times and has been handed down, and it was expanded among common people in the medieval period, which led to creation of diversified religious belief types.

In order especially to expand it in common people and women, a technique called Sepposhodo (preaching Buddhism) was used to conduct missionary activities starting from Agui, which is worthy of note in the history of religious culture. Missionary activities became more visible, and therefore, pictures and performing arts were developed, which has significantly influenced subsequent Japanese culture. In this exhibition, the aspect of missionary activities and their literary development in Japanese medieval belief, especially classical books, will be shown.

This exhibition will be held as part of "Project of Visualizing and Sophisticating Cutting-Edge Study through Utilization of Museums and Exhibitions" of the Inter-University Research Institute Corporation, National Institutes for the Humanities.



Exhibition room

Regular Exhibition: "Various Aspects of Japanese Books"

Planned to run from April to May 26, 2018, and again from January 15 to May, 2019

This exhibition will explain the form and content structure of Japanese books and introduce literary works in manuscript, print and books with the unique characteristics of each period. Throughout the whole, this exhibition intends to educate you to know basic knowledge about Japanese books and give you a change to think about Japanese books.

Regular Exhibition: "Japanese Literary History Based on Documents"

Planned to run from June 11 to September 15, 2018

This exhibition will introduce Japanese literature dating from ancient times until the early Meiji period through documents. Although recent research trends are taken into consideration, the history of the literature is presented with a focus on works that are often included in school textbooks.

Visitors can enjoy various aspects of pre-modern literature through the features of manuscripts and the feelings imparted by printed materials.

Specially Arranged Section

While the regular exhibition is held, a specially arranged section is set up in part of exhibition for exhibiting new additions to our institute's collection.

Lecture Series

(1) Lecture Series

In order to disseminate Japanese literature, Kuzushi-ji lectures are held which are designed for the general public.

In FY 2018, lectures on "Reading Historical Archives (ancient documents) in Tama Area" will be held eight times in total from May through July.



Lecture Series (2017)

(2) Archives College

Long-term and short-term courses are offered for the purpose of cultivating staff specialized in such tasks as archival record preservation and providing user services.

In FY 2018, the long-term course is scheduled to be held at the NIJL for six weeks between July 17 (Tue) and September 7 (Fri). The short-term course is scheduled to be held at Tsuruoka Hometown Museum between November 12 (Mon) and 17 (Sat).



Archives College Long-Term Course (2017)

(3) "Japanese Classics Day" Lecture

"Japanese Classics Day" was established on November 1, 2008, which was the 1,000th anniversary of The Tale of Genji. The Committee for the 1,000th Anniversary for the Tale of Genji (name changed to "The Committee for Promoting Classics Day") declared to the nation that "November 1st is Japanese Classics Day". This day was later enshrined into law. At our institute, a memorial lecture is scheduled to be held on November 3 (Sat / national holiday), 2018.



"Japanese Classics Day" Lecture in 2017

(4) Lectures on Japanese Classical Writings

This seminar is held jointly with the National Diet Library and seeks to provide librarians in Japan and overseas who handle Japanese classical writings with basic knowledge about Japanese classical writings and how to handle them.

In FY 2018, the seminar is scheduled to be held from January 22 (Tue) through 25 (Fri), 2019.



Lectures on Japanese Literature (2017)

List of Major Publications

Publications introducing the NIJL, etc.

- Overview of the National Institute of Japanese Literature
- Annual Report of the National Institute of Japanese Literature
- NIJL News (quarterly bulletin)



NIJL News



Bulletin of the National Institute of Japanese Literature: Studies in Japanese Literature

Research Results

- Bulletin of the National Institute of Japanese Literature
- Book of Studies in Japanese Literature
- Book of Studies in Archive
- Research achievements report
- Symposium report

Related Activities

- Report on Investigation and Research
- The Catalogue of Historical Collections
- Proceedings of the International Conference on Japanese Literature
- Exhibition Catalog



Research report: special research "Historical Accounts and Literature"



Proceedings of the International Conference on Japanese Literature

NIJL Arts Initiative

Project commissioned by the Agency for Cultural Affairs (Strategic Project to Create Culture and the Arts)

We are conducting "NIJL Arts Initiative" as a medium and long term program toward 2020 when Tokyo Olympic and Paralympic Games will be held and for the FY 2021. For example, we will conduct (1) production, publication, and electronical distribution of translated literatures in the classical period or Meiji Period, (2) production, publication, and electronical distribution of modern translated literature text (temporary name "Series Classical Japan") in the classical period or Meiji Period, (3) holding events and special exhibitions including result announcement of artist in residence (AIR) and translator in residence (TIR) and distribution through the media and website by effectively excavating and utilizing abundant pre-modern Japanese works stored in NIJL. Through these activities, we will actively and internationally provide Japanese cultural properties such as pre-modern works in a form in accordance with current social needs.

● There are three sections driving the laboratory.

■ Artist in Residence (AIR)

We will invite artists including Ms. Hiromi KAWAKAMI, an eminent novelist, Mr. Keishi NAGATSUKA who is a playwright, director and actor, and Mr. Koji YAMAMURA, an animation creator, as "Artist in Residence." We will promote creative activities beyond the existing literary frame by directly touching cultural properties such as abundant pre-modern Japanese works stored by NIJL and by conducting workshops held by researchers of Japanese literature, pre-modern Japanese works, and archives.

■ Translator in Residence (TIR)

We will invite eminent translators including Mr. Peter MacMillan as "Translator in Residence", and actively promote international dissemination of Japanese culture by conducting selection of pre-modern Japanese works to be translated, translation that attracts readers in other language areas, delivery of translated works overseas, and more through cooperative projects and workshops with interpreters of the classics and NIJL's researchers.

■ Interpreter of the Classics

We will assign "Interpreter of the Classics" as a person who has expertise in Japanese classical literature and also has the capability in regards to public relations, popularize Japanese classical literature in society via events, lectures, and the media, and promote wide utilization of such literature through cooperative activities not only with universities and research institutes but also with private companies, local governments, and more.



Press release on October 18, 2017

Mr. Robert Campbell (Director), Mr. Peter Macmillan, Mr. Koji Yamamura, Mr. Keishi Nagatsuka, Ms. Tomoyo Arisawa (Specially Appointed Assistant Professor, Interpreter of the Classics) from right to left (Ms. Hiromi Kawakami, absent)



project Logo

The logo uses characters collected from the printed book, "Koushoku Ichidai Otoko" by Saikaku IHARA stored in NIJL.

International Exchange

Japanese literature is studied throughout the world. An important challenge of Japanese literary research is that of analyzing Japanese literature while sharing views of various researches. Based on such an awareness, we established the International Collaboration Division in order to invigorate international exchange activities. Similarly, positive activities are being implemented, such as the hosting of symposiums, seminars, and research conventions overseas.

1 Conclusion of Academic Exchange Agreements

As an international center for Japanese literary research, NIJL actively engages in a variety of academic exchange projects with researchers and research institutions overseas. In particular, it is the conclusion of academic exchange agreements with overseas institutions that allows for stable, ongoing research exchange to take place.

Exchange activities center on the invitation and dispatch of researchers and hosting of international research conventions, but also include the implementation of joint surveys and joint research, and hosting of graduate school students for short-term training.

At present, academic exchange agreements are concluded with the following overseas institutions.

- Collège de France, Institute of Advanced Japanese Studies (France)
- Korea University, Global Institute for Japanese Studies (Republic of Korea)
- Ca' Foscari University of Venice, Department of Asian and North African Studies (Italy)
- "Orientale" University of Naples (Italy)
- Sapienza University of Rome, Italian Institute of Oriental Studies (Italy)
- University of Florence, Department of Languages, Literatures, and Intercultural Studies (Italy)
- Beijing Foreign Studies University, Beijing Center for Japanese Studies (China)
- Leiden University, Faculty of Humanities (Netherlands)
- The University of British Columbia, Faculty of Arts, Department of Asian Studies (Canada)
- Columbia University, Department of East Asian Languages and Cultures (U.S.A.)
- University of California, Berkeley, C.V.Starr East Asian Library (U.S.A.)
- Berlin State Library (Germany)
- Vatican Apostolic Library (Vatican City)
- University of Hawaii at Manoa, Department of East Asian Languages and Literatures (U.S.A.)
- Heidelberg University, Institute of Japanese Studies (Germany)

2 International Conference on Japanese Literature

Meetings are held each fall in order to deepen exchanges between Japanese literature researchers from Japan and overseas, and to develop Japanese literary research while striving to nurture young Japanese literature researchers from other countries.

The 42nd International Conference on Japanese Literature will be held on November 17 and 18 (Sat. and Sun.), 2018. Themes will not be set for the three sessions of the research presentation, short session presentation, and poster session presentation so that it will be easier for young and foreign researchers to participate. The presentations can be given in English.



The 41st International Conference on Japanese Literature (November 11 - 12, 2017)

3 Symposiums and Other Collaborations with Overseas Institutions

With regard to Japanese literature and other related fields, we hold international symposiums and other events in cooperation with researchers and research institutions overseas.

Forum

"Circulation of Knowledge in East Asia" the 1st forum - Books and Culture -

October 24, 2017

National Institute of Japanese Literature

This forum was planned on the basis of the academic exchange agreement between NIJL and Global Institute for Japanese Studies, Korea University in Republic of Korea.

We hope to expand continuous research exchange with a wide field of vision in collaboration with various overseas institutions centering on NIJL's academic exchange partners through this forum.



4 Seminars on Japanese Classical Books

We hold seminars focusing on bibliography and literary culture with regard to Japanese classical books, which are a basis of Japanese culture, in collaboration with overseas researchers and research institutes.

The 4th seminar : Beijing Center for Japanese Studies, Beijing Foreign Studies University (China) on February 27, 2018

The 5th seminar : University of Hawaii at Manoa and Honolulu Museum of Art (U.S.A.) on March 1, 2018



The 4th Seminar on Japanese Classical Books



The 5th Seminar on Japanese Classical Books

5 Exchange with Overseas Researchers (Foreign and Outside Researchers)

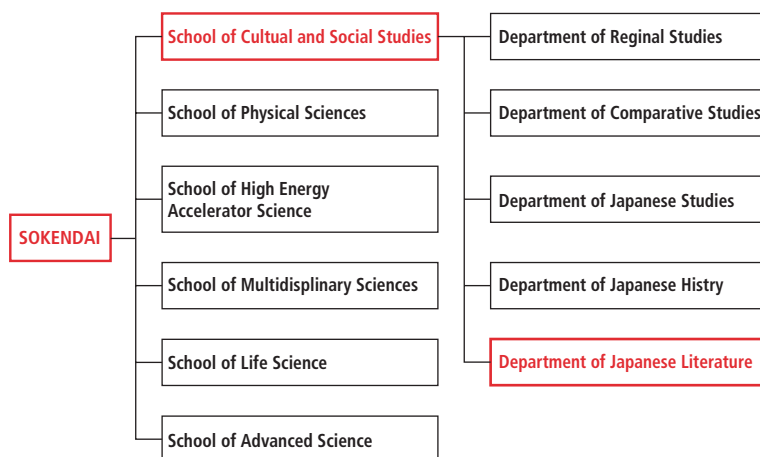
In order to promote the internationalization of Japanese literary research, we invite researchers, who are at the forefront of Japanese literary research and the peripheral research overseas, to NIJL as foreign researchers (guest professors, guest associate professors) and offer them the utilization of NIJL's academic resources and the occasions for personnel exchange. In addition, according to requests from overseas researchers and others, we accept them as outside researchers, who write academic dissertations and do various research activities at the base on NIJL.

Graduate Education

■ The Department of Japanese Literature in the School of Cultural and Social Studies at SOKENDAI (The Graduate University for Advanced Studies)

The NIJL functions as the Department of Japanese Literature in the School of Cultural and Social Studies at SOKENDAI.

This department was established in 2003 and accepts students into the doctoral course. The wealth of original texts and materials kept by the NIJL represent a key cultural information resource for researchers, and the aim is to use this to cultivate specialists in Japanese literature and peripheral areas of study through the comprehensive study of the external and internal characteristics, etc., of the materials in the NIJL collection.



Commencement Ceremony in the Spring of 2017

■ Special Collaborative Research Fellows

NIJL accepts graduate students at the request of universities and cooperates in university education.

The Graduate School Education Collaborative System was started in 1979 and graduate students began to be accepted at the NIJL.

And since 1998, this system has been expanded to accept graduate students as Special collaborative research fellows, and NIJL accepts about 10 students every year.

Unit: persons

	FY2013	FY2014	FY2015	FY2016	FY2017
Accepted Students	6	5	9	7	2

Databases

The institute creates various databases for research in Japanese literature and related areas. The following database are available from the database page of our web site. (<https://www.nijl.ac.jp/en/search-find/#database>).

Book and Periodical Holding List (OPAC)	A catalog of books and periodicals (serial publications) since the Meiji era held by the NIJL.
Database of Research Thesis in Japanese Literature	A catalog of Japanese literature theses from 1888 (Meiji 21) to present.
Database of Pre-modern Japanese Works	Classical works database*1 constructed by "Historical and classical works NW project"
Union Catalogue of Early Japanese Books	Comprehensive catalog of both bibliography and holdings information about Japanese classics, literary works and authors (reference information).
Catalogue of early Japanese books & Catalogue of early Japanese books in microform or digital at NIJL	Catalog database of microfilm/digital materials (classical Japanese works held by universities, libraries, etc., domestically and overseas which are photographed and collected by the NIJL as microfilm or digital materials) and Japanese books held by the NIJL.
Database of the texts of selected classical works	Enables full-text searches and image browsing of the Institute's collection of the following works: Nijuchi-dai Shu (Anthologies of the One and Twenty Reigns), E-iri Genji Monogatari (The Illustrated Tale of Genji), Azuma Kagami (Mirror of the East), and Rekishi Monogatari (Stories from History).
Digital Image Database of Japanese Classics in Collaboration with Collection-owning Institutions	Open digital image database from the reading collection of Hiroshima University Library backed by Grant-in-Aid for Scientific Research FY 2011.
Inventory of Early Japanese Books	Contains primary bibliographic information from the "literature and materials research cards" of manuscripts, editions, etc., held domestically and overseas which the NIJL has researched.
Bibliographic and Image Database of Japanese Modern Times	Public release of results of research and collection of literature materials centering on Japanese literature in and since the Meiji period.
Archival Holdings on Japanese History	Database of overview and catalog of the NIJL historical materials (archives), focused on historical materials from the old collections.
The Kornicki Union Catalogue of Early Japanese Books in Europe	Database of bibliographic and location information on Japanese books held in libraries, museums, etc., in Europe.
Publishing and Advertisement Database in Meiji Era	With the aim of exploring publishing circumstances in modern Japan, it is a collection of publication advertisements printed in newspapers and magazines in the early Meiji period.
Historical Figure Image	Database of images of primarily classical characters up to the Meiji period from illustrated biographies contained in classical Japanese works. Biographies and bibliographical introductions are compiled as a database containing the contents of bibliographical introductions of biographies and the characters appear in the books and microfilms owned by us.
Renga-Ennou-Garaku Database	Open database linked with a Renga database and Ennou database which included a newly produced Gagaku database.
New Naraehon Database	Open database of original text images for Naraehon (19 books) held by the NIJL (accompanies republication).
Kojiruien Database	Database that offers full-text and browsing of the Kojiruien (Dictionary of Historical Terms) that covers institutions, cultural assets and society in Japan from ancient to early-modern times.
Biography Bibliography Database	Database of biographical information related to the research of Japanese classics. Currently contains the Nihon Jinmei Jiten and the Jigekaden.
Fragmentary Manuscripts Database of Japan	Database of printing information for ancient writing fragments since the Kohitsu-gire Teiyo.
International Collaboration for Japanese literary Studies	A database of bibliographic information, images, translations, etc., for overseas research papers.
Collectors' Seals Database	Database of ownership stamp information derived from original copies with a focus on classic books held by the NIJL.
Bibliographical Database of Archival Studies in Japan	Database of research literature in Japan related to archival studies. Individual documents containing chapters are all entered in "Content."
Database of the Location of Historical Materials	This database provides essential information about the location and content of various collections of historical materials currently stored throughout Japan
Japan Museum of Business and Industry Collection Database	Open database of materials information and images pertaining to pictorial art utensils and advertisements from the Establishment Office of the Japan Museum of Business and Industry.
NIJL Database of Detailed Shrine Records	Database of shrine names, locations and structures prior to WWII taken from detailed shrine records throughout Japan.
EGAWA family papers database, Nirayama, the Province of Izu	This database is a joint project with the Egawa Foundation for Preservation of Historic Properties and displays bibliographic information for old texts and literature held by the Foundation.
Archival Location Information and Search System	Database for location and overview of materials originating from different locations throughout Japan (user registration required for detailed version).
Tajiro Masuda Advertisement Collection Database	A database of publication information and images of advertisements collected by Tajiro MASUDA.
Early Modern Period Vocabulary Card Database	Database of approx. 150,000 early-modern vocabulary cards including Kabuki and Joruri.
Directory of Overseas Collection of Old and Rare Japanese Books, Other Print Materials and Manuscripts	An English (with some Japanese) listing of the contact addresses, viewable collections, and so on for institutions outside Japan that hold Japanese Classics
Hanashibon taikē Database	This database provides a searchable version of the full text of Hanashibon taikē (published by To-kyo-do.)
Nihonkotenbungaku taikē Database	This database enables the user to search the full text of the former version of the Nihonkotenbungaku taikē (Japanese Classics) (available to higher educational institutions such as universities and junior colleges).

As of April 1, 2018

*1: See page 9 for the Database of Pre-modern Japanese Works.

*2: See the website for the academic information repository. <https://kokubunken.repo.nii.ac.jp>

Researchers (as of April 1, 2018)

Director-General

Name	Research Content
Robert CAMPBELL	Research into Japanese literature (literature and related art, thoughts and media from the early modern period until the Meiji era)

Research Department

Name	Position	Research Content
Kenji KOBAYASHI	Professor, Deputy Director-General (in charge of planning and coordination)	Research into Muromachi era literature (noh, kyogen, kowaka-bukyoku, otogizoshi, etc.)
Keiichi TANIKAWA	Professor, Deputy Director-General (in charge of research)	Research on the early development of early-modern Japanese literature
Kazuo OTOMO	Professor (Director)	Research into the social structure of early-modern Japan; research into archival studies in early-modern Japan
Ken'ichi KANSAKU	Professor (Director)	Research into early-modern Japanese literature, particularly the history of waka and the arts
Maori SAITO	Professor (Director)	Research into the literature of the middle ages
Atsushi IRIGUCHI	Professor	Research into early-modern literature
Hiroshi OCHIAI	Professor	Research into the literature and performing arts of the middle ages; research into bibliography of Japanese classics
Noriko YAMASHITA	Professor	Research into early-modern literature, particularly e-hon (picture books) and ukiyo-e, and research into kabuki works by Yodaime Tsuruya Nanboku
Koichi WATANABE	Professor	Research into the archival history focused on the social structure of early-modern cities
Mitsuru AIDA	Associate Professor	Japanese literature of the Heian era and middle ages; study of academics and annotations primarily in children's textbooks; narrative literature; cultural information studies
Mutsumi AOKI	Associate Professor	Research relating to historical materials preservation
Sumi AOTA	Associate Professor	Research into Japanese early-modern literature, particularly critical essays and novels of the Meiji and Taisho eras
Keisuke UNNO	Associate Professor	Research on medieval literature and waka literature; research relating to the classics, focusing primarily on the Imperial Court
Naohiro OTA	Associate Professor	Research on regional government of early-modern Japan; research on archival studies in early-modern Japan
Kiyofumi KATO	Associate Professor	Research into the relationship between East Asia and Japan since the latemodern era
Shunsuke KIGOSHI	Associate Professor	Research into Japanese literature of the early-modern period, particularly the history of the novel
Tomoko KOIDA	Associate Professor	Research into the art and literature of the middle ages
Didier DAVIN	Associate Professor	Medieval Buddhism and literature
Shintaro NISHIMURA	Associate Professor	Research into the emperors, the imperial court and the class system of early-modern Japan; research relating to preservation and application of privately held documents
Mariko NOAMI	Associate Professor	Japanese early-modern literature; research on Natsume Soseki; reception history of Eastern and Western classics in Modern Japan
Tadashi NOMOTO	Associate Professor	Research relating to the sophistication of information usage in Japanese literature research

Name	Position	Research Content
Hideo EDO	Assistant Professor	Research into Heian era literature, particularly prose stories
Kristopher REEVES	Assistant Professor	Comparative studies of Sinitic literature in the Heian period; genre studies of Sinitic poetry
Tomoyo ARISAWA	Specially Appointed Assistant Professor	Research into Japanese literature of the early-modern period, particularly Gesaku (light literature) in the Edo period
Takanori OKADA	Specially Appointed Assistant Professor	Research into tale and diary literature written in the Heian period
Shizuko AOKI	Guest Professor	Bibliographic research into the Tales of Ise corpus of the Tesshinsai collection
Toshiharu IRISAWA	Guest Professor	Network construction of local materials/information including administrative documents

Center for Collaborative Research on Pre-modern Texts

Name	Position	Research Content
Keiichi TANIKAWA	Director (dual post)	Research on the early development of early-modern Japanese literature
Kazuaki YAMAMOTO	Deputy Director, Specially Appointed Professor	Research on nineteenth-century Japanese literature
Keiko KITAMURA	Associate Professor	Research into the theory of information science in relation to the humanities
Kiyomi IWAHASHI	Specially Appointed Associate Professor	Research on the early-modern cultural history and the history of historical document management
Kahoko IGURO	Specially Appointed Assistant Professor	Research on picture scrolls and picture books from the middle ages to the early modern age
Kazuhiro OKADA	Specially Appointed Assistant Professor	Research on modern and early-modern Japanese language
Kuninori MATSUDA	Specially Appointed Assistant Professor	Research on utilization of computers in the humanities

Reference Data

Staff, Budget and Facilities (FY 2018)

Staff Unit: persons (Unit: persons)	Budget (Unit: 1,000 Yen)	Facilities (Unit: m ²)
Director-General	Income	Total floor area
Professor	1,185,721	13,002
Associate Professor	Administrative cost subsidies	This includes the following:
13	1,179,942	Reading room
Assistant Professor	Non-subsidized income	1,584
2	5,779	Stack room / storage
Specially Appointed Professor	Expenses	2,416
1	1,185,721	Exhibition room
Specially Appointed Associate Professor	Education and research cost	355
1	737,578	
Specially Appointed Assistant Professor	Administrative overhead	
5	448,143	
Administrative Staff		
39		
Total		
71		

Grants-in-Aid for Scientific Research (FY 2018)

(Unit: yen)

Categories	Review Classification	Research Representative	Research Project Title	Research Budget
Grant-in-Aid for Scientific Research (A)	General	Yuichiro IMANISHI	Advanced research on notational information science in Japanese classical literature	6,100,000
Grant-in-Aid for Scientific Research (A)	General	Mitsuru AIDA	Construction of a foundation for research into the Japanese practice of holding memorial services for things, sentient and otherwise	6,400,000
Grant-in-Aid for Scientific Research (A)	General	Mutsumi AOKI	Interdisciplinary research into the development of an archive retrieval system for use in local communities	9,900,000
Grant-in-Aid for Scientific Research (A)	Overseas academic research	Kazuo OTOMO	Overseas academic research aimed at making the Bungo Christian materials stored in the Vatican Library available as an international information resource	6,300,000
Grant-in-Aid for Scientific Research (B)	General	Keisuke UNNO	Research on the network and stored books of shrines and temples, based on the Buddhist sutras and documents of Kongoji Temple	3,800,000
Grant-in-Aid for Scientific Research (B)	General	Kenji KOBAYASHI	International research on narratives in picture scrolls and picture books	3,700,000
Grant-in-Aid for Scientific Research (B)	General	Koichi WATANABE	Research on urban disasters in early-modern period as the history of relations between nature and human	3,000,000
Grant-in-Aid for Scientific Research (B)	Overseas academic research	Noriko YAMASHITA	Comprehensive Research on Bibliographies, Publication, and Interpretation: Based on Illustrated Books Overseas	2,500,000
Grant-in-Aid for Scientific Research (C)	General	Ken'ichi KANSAKU	Comprehensive study on poetry contests in the early modern age	700,000
Grant-in-Aid for Scientific Research (C)	General	Kazuaki YAMAMOTO	Fundamental study on the relationships of people through classical books in the end of the Edo period and the Meiji period	Project term extended
Grant-in-Aid for Scientific Research (C)	General	Yukinori MINO	Restorative research into archives relating to the Hokkaido migrations of the warrior class during the early Meiji years	1,100,000
Grant-in-Aid for Scientific Research (C)	General	Tomoko KOIDA	Research into relationships between the production of vernacular tales and the publication of Buddhist sermons in the sixteenth and seventeenth centuries	1,000,000
Grant-in-Aid for Scientific Research (C)	General	Shunsuke KIGOSHI	Comprehensive study on structure, subject matter and description with regard to long novels of the early 19th century in their initial stage	900,000
Grant-in-Aid for Scientific Research (C)	General	Yoji OTAKA	Multifaceted investigation into the composition of full-length illustrated storybooks printed in the late Edo period	600,000
Grant-in-Aid for Scientific Research (C)	General	Maori SAITO	Construction of a history of titles of feudal-period drawings	1,100,000
Grant-in-Aid for Scientific Research (C)	General	Kiyomi IWAHASHI	Research on the features of historical perspectives and networks in the collection of antiques by Edo-period investigators	800,000
Grant-in-Aid for Scientific Research (C)	General	Didier DAVIN	Ideological mapping of Buddhist sermon in Japanese writing by Zen priests	500,000
Grant-in-Aid for Challenging Exploratory Research		Tadashi NOMOTO	Research into reading cursive scripts via searches using a multipurpose calligraphy image database, as opposed to depending on software capable of automatically changing such scripts into easy-to-read text	700,000
Grant-in-Aid for Young Scientists (B)		Hideyuki UESUGI	Development of example dictionaries and character prediction Development of example dictionaries and character prediction database for restoration of inscriptions on weathered monuments	800,000
Grant-in-Aid for Young Scientists (B)		Kazuhiro OKADA	Research on the history of hiragana by cooperation between the hiragana form database and the corpus of hiragana form used in textbooks in the 19th century	900,000
Grant-in-Aid for Young Scientists		Mika TAKIZAWA	Relevance between the gunki monogatari and moral codes in the 16th century	900,000
Grant-in-Aid for Young Scientists		Fumiaki TATENO	Research on creation and development of secret books of waka poetics and poetry knowledge that centers on consideration of Usagi forgeries of waka poetics	800,000
Grant-in-Aid for Young Scientists		Tomoyo ARISAWA	Research on literature in the late early-modern period based on relations between network of hobby to sturdy historical documentation and forgeries as clues	800,000
Grant-in-Aid for Young Scientists		Takeshi KUREBAYASHI	General study on fictional war chronicles	300,000
Grant-in-Aid for Young Scientists		Yi HUANG	Comparative study on views about animals between Japan and China that can be seen in narrative literature - "Taiping Guangji" and "Yijianzhi", "Ikenshi wage"	400,000
Grant-in-Aid for JSPS Fellows		Azumi NOMURA	Research on the couplets of the Kigin School Undecided	250,000
Fund for the Promotion of Joint International Research		Mariko NOAMI	The reception in Japan of British culture through the literature of Sōseki Natsume: on the development of theories of the novel (strengthening international collaborative research)	0 ※
Research result academic book		Keisuke UNNO	Read and understand waka, inform waka	1,900,000
Research result academic book		Kazuaki YAMAMOTO	<Modern period> of gesaku in the early-modern period	1,400,000
Grant-in-Aid for Publication of Scientific Research Results Database		Ken'ichi KANSAKU	Comprehensive Database of Japanese Pre-modern Texts	2,000,000
Grant-in-Aid for Publication of Scientific Research Results Database		Kazuaki YAMAMOTO	Digital Image Database of Japanese Classics in Collaboration with Collection-owning Institutions	6,400,000
Grant-in-Aid for Publication of Scientific Research Results Database		Sumi AOTA	Database of Early Meiji Publication Advertisements	2,700,000
Grant-in-Aid for Publication of Scientific Research Results Database		Mitsuru AIDA	Database for Research Thesis Catalog of Japanese Literature Studies in Taisho, Showa, and Heisei Period	3,200,000

*The total amount for the entire research period (FY2016-2018) was paid in FY2016..



Inter-University Research Institute Corporation National Institutes for the Humanities

It consists of six Inter-University Research Institutes involved in research in humanities. While each one of the institutes is deeply involved in foundational research in their field as a core research center of Japan and as an international research center, six institutes interact in a complementary fashion and transcending the frameworks of previous scholarship. They also cooperate with research institutes in Japan and other countries in their attempt to identify and solve issues in contemporary society. To achieve a truly enriched human life, NIHU promotes research on the human sciences and aims to create new value.

Promotion of Research and Public Information

Activities IHU set up the Center for Transdisciplinary Innovation (CTI) and the Center for Information and Public Relations (CIP) in FY 2016.

The two Centers are promoting international joint research by building a research network around six institutions positioned as its hubs. At the same time, they publish information to the world proactively, and enhance and promote the development of the next generation of scholars.

Center for Transdisciplinary Innovation (CTI)

CTI promotes collaboration and cooperation of the six institutes with research institutes of universities or others in Japan and other countries and with local communities. It promotes the NIHU Transdisciplinary Project, an organizational joint research project that contributes to identifying contemporary issues, with the aim of creating a new value system for the human sciences.

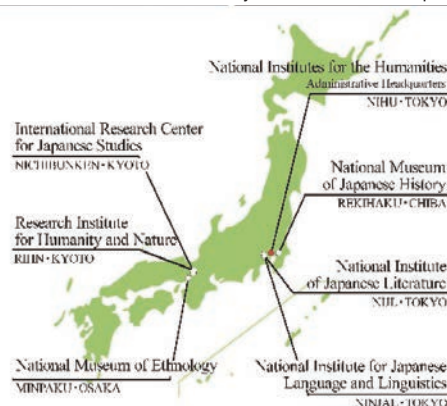
NIHU Transdisciplinary Projects

Institute-based Projects	REKIHAKU: Constructing Integrated Studies of Cultural and Research Resources, and Renovating Sharing Infrastructures of Research Resources in Japanese History and Culture
	NIJL: Project to Build an International Collaborative Research Network for Pre-modern Japanese Texts
	NINJAL: Diverse Language Resources and the Consolidation of Japanese-language Studies
	NICHIBUNKEN: Historical and International Research into Popular Culture to Pursue New Images of Japan
	RIHN: Transformation towards Sustainable Futures in Complex Human-Nature Systems in Asia
Multidisciplinary Collaborative Projects	MINPAKU: Info-Forum Museum for Cultural Resources of the World
	Change of Local Communities and Reconstruction of Community Cultures after Disasters in Japanese Archipelago
	Rethinking Eco-health in Asia
	Development of a Field of Comprehensive Bibliographical Studies from an Interdisciplinary Perspective
Network-based Projects	NIHU Area Studies Northeast Asia, Modern Middle East, South Asia
	Japan-related Documents and Artifacts Held Overseas: NIHU International Collaborative Research and Utilization The Archives of the Dutch Factory in Hirado Insights into Japan-related Overseas Artifacts and Documents of the 19th Century in Europe through Research and Use Research, Conservation and Utilization of the Marega Collection Preserved in the Vatican Library Survey, Study and Use of the Japan-related Documents and Artifacts in North America Coordination between Projects to Make Effective Use of Research Results

Four Inter-University Research Institute Corporations, and six Inter-University Research Institutes in humanities.



NIHU is one of the six Inter-University Research Institute Corporations.



Center for Information and Public Relations (CIP)

CIP digitalizes comprehensive academic research resources related to the human sciences to promote the widespread use of the resources by universities and scholars all over the world. At the same time, it encourage sharing of research outcomes for the common good by strengthening two-way collaboration with society.

Public Information Activities

Research resource advanced collaboration nihulNT https://intnihajp Database on research in the human sciences for integrated retrieval of information resources from inside and outside the NIHU
Information Diffusion Division Repository https://www.nihu.jp/ja/publication/database#repo Each organization opened the repositories to the public in order to communicate the research results throughout the world Researcher database http://nrd.nihu.jp Each institute publishes a repository for sharing research outcomes with the world. An integrated database of scholars, which provides information about scholars who belong to NIHU, is also operated. English Resource Guide for Japanese studies and Humanities in Japan https://guides.nihu.jp/japan_links Build link collections to support comprehensive access to research information on Japanese culture and operate them NIHU Magazine https://www.nihu.jp/ja/publication/nihu_magazine This magazine provides information about NIHU's latest research activities and findings to the world.
Collaborations with Society The 30th Japanese culture in overseas countries - Think about its value and utilization - (June 2017) The 31st Eco-health: Think about ways of living - Environment•Health•Longevity - (February 2018) The 32nd Systematization of information and intellect by humanity knowledge - What do we create by assimilation of different cultures - (February 2018)
Industry-Academia Collaborations Promoting sharing of research outcomes for the common good by collaborating with industries such as the tourism industry • Held the symposium under the co-sponsorship with the Ajinomoto Foundation for Dietary Culture (January 2018) • Held the special lecture collaborating with Otemachi academia (March 2018)

Visualization・advancement project of the most advanced researches utilizing museums and exhibitions

Organizations of this institute and research institutes such as universities collaborate to visualize the most advanced research on human cultures by utilizing museums and exhibitions and construct “Visualization・advancement project of the most advanced researches utilizing museums and exhibitions” that is a research promotion model upgrading researches by co-creation between cooperation in various fields, academic circles and society in order to create new areas.

Network construction project between inter-university research institutes who preserve historical and cultural materials

We promote the project to preserve historical and cultural materials including material investigation and data recording of them, establishment of the extensive mutual support system and material preservation research centering the institute (leading organization: National Museum Of Japanese History), the Tohoku university and the Kobe university through the collaborative structure of “siryo-net” that does activities mainly in universities all over Japan. Our other goal is inheritance and creation of historical culture in local society through researches utilizing materials, education program development and dissemination of information both domestically and overseas.

Humanity knowledge communicator

We are executing projects to develop researchers as humanity knowledge communicators who have skills to intelligibly inform society of results from research on human cultures and acquire request and response to researches from the society and feed them back to the actual research sites. By utilizing research resources, a variety of media and transmitting functions, we aim at visualization and development of researches by collaboration and co-creation with society while developing human resources contributing to promotion of the humane studies as a “connecting person” who realizes communication between researchers and society.

Cooperation with the Society

We promote feedback of results of research on human cultures to society by collaborating with local society and industrial circles.

Collaboration in 2017 (Heisei 29)

- Held the 30th NIHU symposium collaborating with the Kyushu university, etc.
- Held the symposium collaborating with cookpad under the co-sponsorship with the Ajinomoto Foundation for Dietary Culture
- Held the special lecture collaborating with Otemachi academia (YOMIURI ONLINE, Chuokoron-Shinsha)
- Held the media social gathering collaborating with the Tohoku university and the Kobe university

Graduate School Education

Four of the institutes have established five departments (doctoral programs) by taking advantage of the characteristics of each, as a foundational institute of the school of Cultural and Social Studies, Graduate University of Advanced Studies (SOKENDAI), thereby fostering scholars with a high level of expertise and a broad perspective. In addition, the six institutes of NIHU contribute to developing human resources as next generation leaders, for example by accepting postgraduate students from other universities to support their research.



“Network construction project between inter-university research institutes who preserve historical and cultural materials”

Media social gathering collaborating with the NIHU, the Tohoku university and the Kobe university



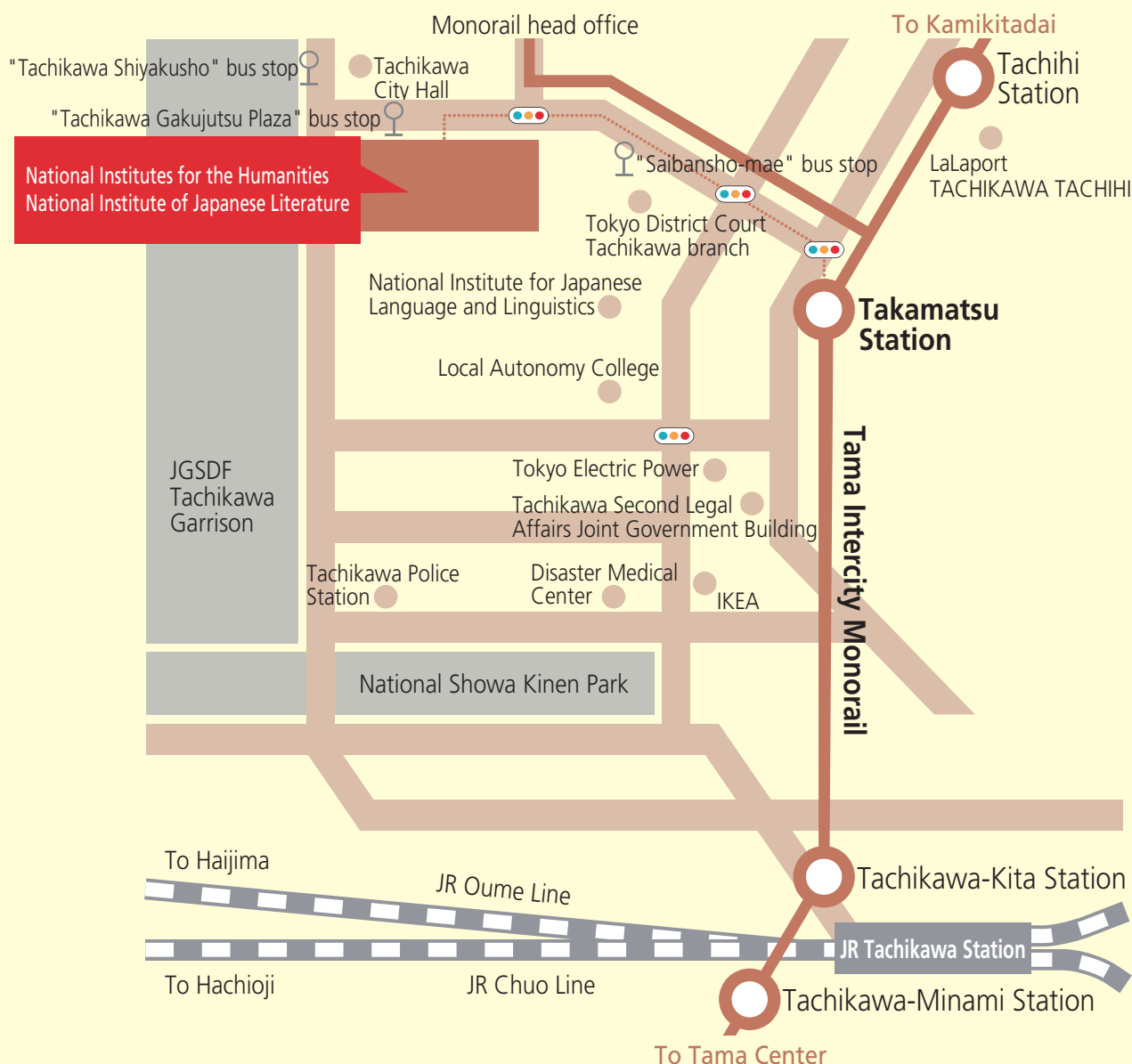
Lecture by humanity knowledge communicators
(At the National Museum of Emerging Science and Innovation in December 2017 (Heisei 29))



Collaborative symposium by the NIHU and the Ajinomoto Foundation for Dietary Culture “Food and life for ordinary people that can be read from books written in the Edo period” (At the Ajinomoto Group Takanawa Training Center)

Each major of the school of Cultural and Social Studies

- Major in Regional Studies
(National Museum of Ethnology)
- Major in Comparative Studies
(National Museum of Ethnology)
- Major in Japanese Studies
(International Research Center for Japanese Studies)
- Major in Japanese History
(National Museum of Ethnology)
- Major in Japanese Literature
(National Institute of Japanese Literature)



Directions

By Tama Intercity Monorail:

Get off at JR Tachikawa Station, make switch to Tama Monorail Tachikawa-Kita Station, get off at Takamatsu Station, and walk 10 minutes.

By Tachikawa bus:

From JR Tachikawa Station's north entrance, board bus at boarding area ②, get off at "Tachikawa Gakujutsu Plaza," and walk 1 minutes.

From JR Tachikawa Station's north entrance, board bus at boarding area ①, get off at "Tachikawa Shiyakusho," and walk 3 minutes.

From JR Tachikawa Station's north entrance, board bus at boarding area ②, get off at "Saibansho-mae," and walk 5 minutes.

On foot:

From JR Tachikawa Station, walk about 25 minutes.

By car:

From Chuo Expressway's "Kunitachi Fuchu IC," drive about 15 minutes.
*Free parking available

大学共同利用機関法人 人間文化研究機構

国文学研究資料館

10-3 Midori-cho, Tachikawa, Tokyo

TEL: 050-5533-2900

FAX: 042-526-8604

<https://www.nijl.ac.jp/>

National Institute of Japanese Literature (NIJL)

National Institutes for the Humanities

Address: 10-3 Midori-cho, Tachikawa city, TOKYO 190-0014, Japan

TEL: +81-50-5533-2900

FAX: +81-42-526-8604