



Contents

| | |
|--|----|
| A Message from the Director: Dr. WATANABE Yasuaki | 3 |
| Overview | 4 |
| Outline of the Current Research Being Conducted at NIJL | 6 |
| Model Building in Humanities through Data-driven Problem-solving | 8 |
| Project to Build an International Collaborative Research Network for Pre-Modern Japanese Texts | 10 |
| Open Databases | 15 |
| Overview of Activities | 16 |
| Researchers | 24 |
| Support for Young Researchers | 26 |
| Graduate Education | 27 |
| Reference Data | 28 |
| National Institutes for Humanities | 30 |

A Message from the Director : Dr. WATANABE Yasuaki

Welcome to the National Institute of Japanese Literature (NIJL).

The institute was founded in 1972, and this year marks its 50th anniversary. This means that we have been contributing to research in Japanese literature and other related fields for half a century.

NIJL started its library services in July 1977.

Reflecting back upon my own memories, at the time I had enrolled only a year earlier in my university's Department of Japanese Literature, and made my first visit to the institute, then located in Togoshi (Shinagawa-ku, Tokyo), on the advice of an older student. I remember my surprise at how easy it was there to peruse—and even request copies of—texts and documents that in the past I had been able to access only with great difficulty.

In the 40-odd years since then, the range of materials that NIJL offers has dramatically expanded, and the quality of its services has also remarkably improved.

In particular the extensiveness of the institute's databases is nothing short of astounding. In today's environment, where in addition to threatening our very lives, COVID-19 has placed significant constraints on our ability to do research and access documents, it seems to me that the importance of such databases' contributions is a fact now universally recognized.

Among these databases, the Database of Premodern Japanese Works has been a centerpiece. It was developed from the "Project to Build an International Collaborative Research Network for Premodern Japanese Texts" (NIJL-NW Project), which the institute has taken a leading role in promoting since 2014.

The aim of this project has been to produce image data for 300,000 unique items, through collaboration with research facilities both in Japan and abroad, while simultaneously pursuing various international collaborative research endeavors. Building on this achievement, a new successor project, titled "Creation of a Data-driven, Solutions-focused Paradigm for Research in the Humanities," was recently approved within the framework of the Ministry of Education's 2020 Roadmap. This led to the founding of the Center for Data-Driven Research on Premodern Japanese Texts, and the beginning of a new set of initiatives for the institute. Going forward, I hope we can chart a path showing how vast stores of accumulated data might be put to use. With such a goal in mind, we are pursuing a number of projects—even on an international scale—in collaboration with various different fields, the physical sciences included. Such promotion of collaborative research, through the creation a network of researchers that spans national divisions, is another one of our institute's chief tasks.

No matter the type of information, it is ultimately us humans who put it to use, and also us humans who, in consuming it, make of it nourishment to feed our own intellect. As such, there is no point in letting our resources go to waste behind lock and key.

At present, many people are seriously asking what the humanities are good for. This is precisely why I believe our words and actions are necessary. For it is the classics that teach us how to keep our heads above water in a sea of knowledge, the classics that show us the way forward when confronted with multiple different perspectives. Discovering previously unknown texts and documents from the past; bringing them back to life in the present by providing them in a manner that makes them accessible; demonstrating their value in a way that one and all can share—such is the mission incumbent upon all those involved with premodern texts, and one in which it is my hope that our own institution will take the lead.



© えくてびあん

Overview

The Goals of NIJL

This institute strives to serve researchers in the field of Japanese literature and those working in various other fields by collecting a massive archive of materials related to Japanese literature from all corners of the country in one location. NIJL is a comprehensive research institute and functions as a foundation for the broader promotion of advanced collaborative research into Japanese literature. NIJL is engaged in creating cross-disciplinary research that utilize premodern Japanese texts as rich intellectual resources through collaboration with research institutions and researchers both inside and outside the country by making use of the accumulated materials and findings of research on premodern Japanese texts.

A Brief Chronology of NIJL

| | |
|----------------|--|
| 1966 December | The Science Council of Japan advises the Japanese government to establish a “Center for Research on Japanese Language and Literature” (provisional title). |
| 1970 September | The Council for Science and Technology reports to the Minister of Education on its emergency establishment of a “Center for Research on Japanese Literature” (provisional title). |
| 1971 April | Funding is allocated to the Ministry of Science, Education and Culture for investigations regarding the provision of a facility to house archival materials for Japanese literary study. |
| 1972 May | The National Institute of Japanese Literature (official name) is established, consisting of a management division, a documents and materials division, and a research and information division. |
| 1977 June | Inaugural ceremony is held. |
| 1977 July | Library services commence. |
| 1979 April | Library services division established. |
| 1987 April | Online search services set up for the database of NIJL's Microfilm Materials catalog and Premodern Japanese Manuscripts catalog. |
| 1992 April | Online search services made available for the catalog of research articles on Japanese Literature. |
| 2002 November | Ceremony held in commemoration of NIJL's 30th anniversary. |
| 2003 April | Department of Japanese Literature is established in the School of Cultural and Social Studies within the Graduate University for Advanced Studies as a foundational institution for research. |
| 2004 April | Internal reorganization at NIJL after the incorporation of its parent institution, which is hereafter named the Institute for the Humanities of the Inter-University Research Institute Corporation. |
| 2008 March | NIJL is moved to its current location in Midori-cho, Tachikawa city. |
| 2013 April | The Center for a Premodern Japanese Texts Database is established. |
| 2014 April | The Center for a Premodern Japanese Texts Database is renamed as the Center for Collaborative Research on Premodern Japanese Texts. |
| 2019 February | Founding of the Tama Academic and Cultural Platform “Plat NIJL.” |
| 2020 November | The Global Consortium for Japanese Textual Scholarship is established. |
| 2022 April | The Center for Data-Driven Research on Premodern Japanese Texts is established. |
| 2022 May | Ceremony held in commemoration of NIJL's 50th anniversary. |

About the Facility

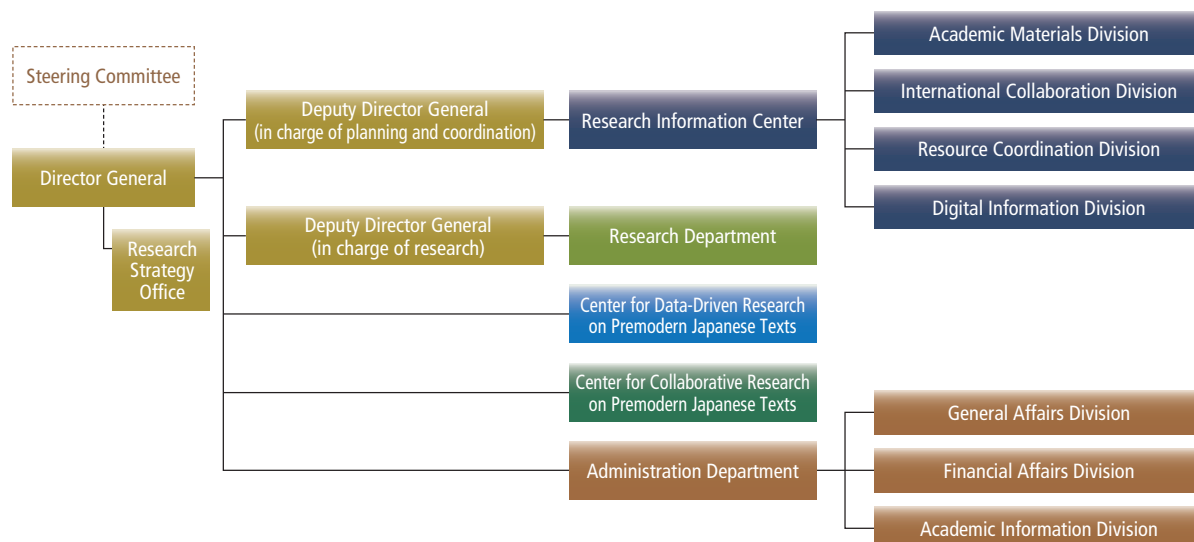
In August 1989 and again in June 1993, governmental meetings were held to discuss a proposal on relocating a number of national institutions to reduce the increasing congestion of people and the overconcentration of national resources in the center of Tokyo's metropolitan area. It was in accordance with decisions reached during these meetings that NIJL was moved in March 2008, from Shinagawa Ward to Midori-cho, Tachikawa city, outside the central metropolitan area.

The facility was designed to be fully accessible, with visitor convenience in mind.

The reading and exhibition rooms are open to visitors. The reading room provides open access to all reference books and a relaxed, spacious atmosphere for reading. The exhibition room holds regular exhibits of premodern texts from NIJL's collection.



Organization



Steering Committee

Non-NIJL Members

| | |
|--------------------|--|
| ANDO Hiroshi | Professor, Graduate School of Humanities and Sociology, The University of Tokyo |
| OSUMI Noriko | Vice President of Tohoku University and Director of Tohoku University Libraries |
| OTANI Setsuko | Professor, Graduate School of Literature, Seijo University |
| KAWAHIRA Toshifumi | Professor, Faculty of Humanities, Kyushu University |
| KUFUKIHARA Rei | President, Aichi Prefectural University |
| KURAKAZU Masae | Professor, College of Bioresource Sciences, Nihon University |
| SASAKI Takahiro | Chair, Keio Institute of Oriental Classics |
| TAKADA Hirohiko | Professor, College of Literature, Aoyama Gakuin University |
| TAKANO Toshihiko | Professor Emeritus, Gakushuin University |
| Zhang Longmei | Professor, Beijing Center for Japanese Studies, Beijing Foreign Studies University |
| YAMAJI Kazutsuna | Professor, Digital Content and Media Sciences Research Division, National Institute of Informatics |
| YAMAMOTO Satomi | Professor, Faculty of Letters, Arts and Sciences, Waseda University |
| Robert Huey | Professor Emeritus, University of Hawai'i at Mānoa |

NIJL Members

| | |
|--------------------|---|
| IRIGUCHI Atsushi | Deputy Director General (Planning and Coordination) |
| UNNO Keisuke | Professor, Research Department (Head of Research) |
| OYAMA Keizo | Visiting Professor |
| OCHIAI Hiroshi | Professor, Research Department (Head of Research) |
| KANSAKU Ken'ichi | Deputy Director General (Research) |
| SAITO Maori | Professor, Research Department |
| NISHIMURA Shintaro | Professor, Research Department (Head of Research) |
| FUJIZANE Kumiko | Professor, Research Department (Head of Research) |
| YAMAMOTO Kazuaki | Professor, Research Department (Head of Research) |

Executive Staff

| | |
|---|------------------|
| Director General | WATANABE Yasuaki |
| Deputy Director General (in charge of Planning and Coordination) | IRIGUCHI Atsushi |
| Deputy Director General (in charge of Research) | KANSAKU Ken'ichi |

Research Department

| | |
|------------------|--------------------|
| Head of Research | UNNO Keisuke |
| Head of Research | OCHIAI Hiroshi |
| Head of Research | NISHIMURA Shintaro |
| Head of Research | FUJIZANE Kumiko |
| Head of Research | YAMAMOTO Kazuaki |

Research Information Center

| | |
|---|--------------------|
| Director (dual post) | IRIGUCHI Atsushi |
| Manager of Academic Materials Division (dual post) | UNNO Keisuke |
| Manager of International Collaboration Division (dual post) | FUJIZANE Kumiko |
| Manager of Resource Coordination Division (dual post) | NISHIMURA Shintaro |
| Manager of Digital Information Division (dual post) | OCHIAI Hiroshi |

The Graduate University for Advanced Studies (SOKENDAI), School of Cultural and Social Studies

| | |
|---------------------------------------|-------------|
| Chair of Major in Japanese Literature | SAITO Maori |
|---------------------------------------|-------------|

Center for Data-Driven Research on Premodern Japanese Texts

| | |
|----------------------|-------------|
| Director (dual post) | OYAMA Keizo |
|----------------------|-------------|

Center for Collaborative Research on Premodern Japanese Texts

| | |
|-----------------------------|------------------|
| Director (dual post) | YAMAMOTO Kazuaki |
| General Manager (dual post) | KAWANO Hiroshi |

Administration Department

| | |
|--|--------------------|
| Director | SHIMAZAKI Masahiro |
| Manager | KAWANO Hiroshi |
| Manager of General Affairs Division | IRIYAMA Hiroki |
| Manager of Financial Affairs Division | SHINDO Hikaru |
| Manager of Academic Information Division | KATAOKA Shin |

Outline of Current Research Being Conducted at NIJL

NIJL is engaged in the following collaborative research projects by making use of the massive materials (premodern texts, digital data, microfilms, printed photographs) on Japanese literature and related fields accumulated through both 50 years of surveying and collecting project and the Large-Scale Academic Frontiers Project ("Project to Build an International Collaborative Research Network for Pre-Modern Japanese Texts") started in the 2014 fiscal year as the research resources for the further promotion and development of diverse studies of Japanese literature.

Collaborative research is indispensable to fulfill our mission as an inter-university research institute. Thus, we set up a joint research committee, involving 14 committee members (8 outside specialists, 6 in-house faculty) to determine application guidelines, to select projects, and to manage progress of projects.

In the 2022 fiscal year, the first year of the fourth mid-term, we further expand and enrich our research activities with another seven projects in new three research areas ("Modern Literature," "Regional Materials," "International") under Special Research Projects.

In any collaborative research projects, regardless of how to select a project, we carefully assess the ratio of young scholars in each project and give consideration to fostering researchers for the next generation in the course of developing the projects. Whenever a collaborative research project is led by an outside researcher, we assign an in-house faculty member to the project to ensure that the project proceeds smoothly.

Core Research Projects

Core research projects are collaborative research that serves as fundamental research on Japanese literature and the related fields. All projects are to be led by our faculty members as a main researcher, and we select other project members.

- **"Comprehensive Research on Regional Cultural Centers in the 19th Century: The case of the Hirose Family"** (2019-2023)
Main Researcher: IRIGUCHI Atsushi (Professor at NIJL)
- **"Fundamental Research on the emergence of the foundations of society permeated with archival awareness"** (2022-2027)
Main Researcher: OTA Naohiro (Associate Professor at NIJL)
- **"A Comprehensive Study of Searches on the Historical Japanese Books Database"** (2015-2023)
Main Researcher: AIDA Mitsuru (Associate Professor at NIJL)
- **"Basic Research on Rare Books in the NIJL Collections"** (2022-2027)
Main Researcher: OCHIAI Hiroshi (Professor at NIJL)

Special Research Projects

Special research projects are collaborative research addresses specific research subject.

General

These projects are collaborative research promoted using various materials (premodern Japanese texts, digital data, microfilms, paper-printed photographs, etc.) accumulated by NIJL as the main research resources. All projects are selected through a public application process.

- **A Venture into Comprehensive Cataloging of Printed Editions Using Micro/Digital Materials in the NIJL Collections**
Main Researcher: TAKAGI Hiroaki, Adjunct Lecturer at KINDAI University (Visiting Researcher at NIJL) (2021-2023)
- **Research and Material Preparation of Kamakura Period Texts of Medieval Stories: A Focus on the Tale of Sagoromo**
Main Researcher: MATSUMOTO Oki, Associate Professor at Kansai University (2021-2023)
- **A Study on The Development of *Wakan* Comparative Literature: The Interaction with Textual Criticism in Postwar Japan**
Main Researcher: SASAGAWA Isao, Adjunct Lecturer at Kokugakuin University (2022-2024)

Project

The project is collaborative research conducted on our specific collection (including the ones that loaned to us), with one of the research outcomes to create and publish bibliographical introduction of related documents. The project is composed of researchers (applicants) who will conduct an individual research project as a project member, and each of them will also aim to acquire various knowledge through exchanges at the research meetings. (The main researcher is to be selected by the project members at the first meeting.)

All projects are selected through a public application process.

- **Basic Research on Documents on Loan from the Research Institute for Japanese Music Historiography, Ueno Gakuen University** (2020–2022)

Main Researcher: KANDA Kunihiko, Full-Time Lecturer at Hanazono University

- **Basic Research on the NIJL MATSUNO Yoichi Collection** (2022–2024)

Main Researcher: TATENO Fumiaki, Associate Professor at Saitama University

Modern Literature

This is a collaborative research project on modern Japanese literature. Our faculty member leads a project as a main researcher, and we select other project members.

- **The Relation Between Literary Exempla, Writing, and Readers in Modern Japanese Literature** (2022–2024)

Main Researcher: TADA Kurahito, Associate Professor at NIJL

Regional Material

These are collaborative research projects in which each main researcher, who is an expert in and has in-depth knowledge of one of the five collections selected from among libraries and collections across the country where we have performed surveying and collecting, leads the project. The project members are mainly members of the regional material specialist committee (formerly known as “Japanese literature literature material investigators”) who have been responsible for the surveying and collecting project at each region.

It is required to hold a seminar in each fiscal year on the collection that was used by the project for its research material in order to share the importance of research resources with people in each region.

- **Research on the Tohoku University Kano Collection** (2022–2024)

Main Researcher: SAKURA Yoshiyasu, Professor at Tohoku University

- **Research on Classical Documents Handed Down from Kamo Shrine Including Classical Documents in the Yamamoto Family on Loan from the Kyoto City Library of Historical Documents** (2022–2024)

Main Researcher: KOBAYASHI Kazuhiko, Professor at Kyoto Sangyo University

- **Research on the Soai University Syunsyo Collection: Books and people** (2022–2024)

Main Researcher: CHIBA Shinya, Professor at Soai University

- **Research on the Masamune Collection** (2022–2024)

Main Researcher: KAWASAKI Tsuyoshi, Professor at Shujitsu University

- **Comprehensive Research on the Nakagawa Collection (Yutoku Inari Shrine)** (2022–2024)

Main Researcher: MURAKAMI Yoshiaki, Associate Professor at Kumamoto Gakuen University

International

This is an international collaborative research project promoted based on research and study of overseas premodern Japanese texts. Our faculty member leads a project as a main researcher, and we select other project members. (The participation ratio of overseas researchers in each project is assessed)

- **Research on Premodern Japanese Works in University of Hawaii of Manoa and Honolulu Museum of Art** (2022–2024)

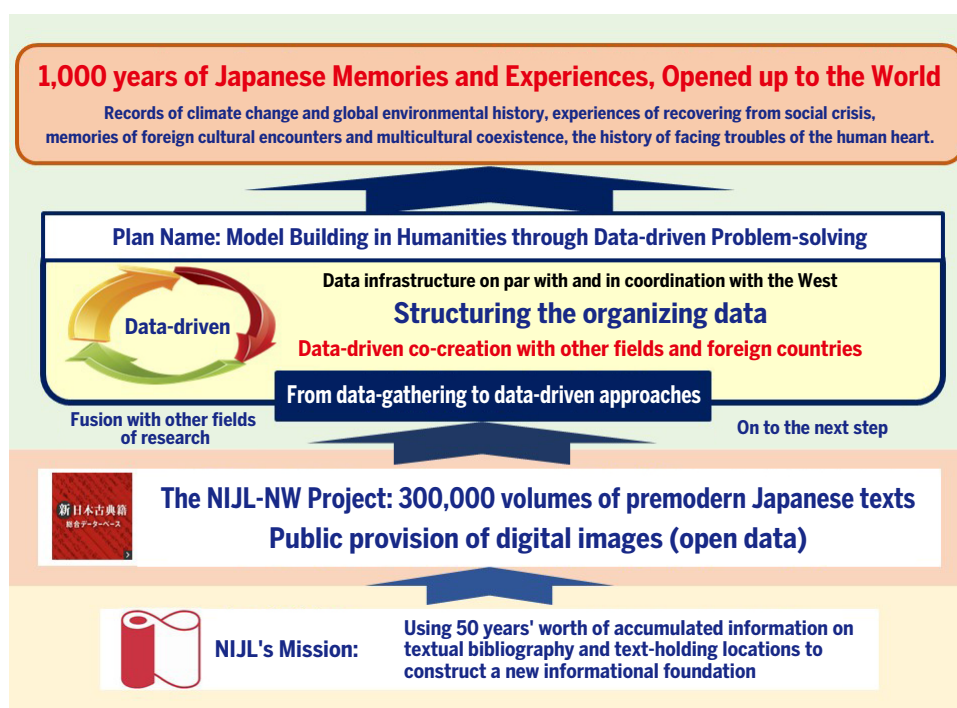
Main Researcher: KANSAKU Ken'ichi, Professor at NIJL

Model Building in Humanities through Data-driven Problem-solving

The Center for Data-Driven Research on Premodern Japanese Texts was founded by NIJL with several goals in mind. These involve the task of modifying the corpus of premodern Japanese textual data to make it machine-readable; the construction of a circulatory framework allowing even findings from collaborative research with scholars from other fields (such as the natural and social sciences) to be incorporated into a larger data infrastructure; and the creation of a solutions-focused paradigm for humanities research under which scholars from the human sciences can contribute, in concert with other fields, towards the resolution of various issues in contemporary society.

Additionally, as a continuation of NIJL's currently active large-scale academic frontier research promotion project, namely the "Project to Build an International Collaborative Research Network for Pre-modern Japanese Texts" (NIJL-NW Project), we are developing plans, not only to make widely accessible—even to scholars in the natural and social sciences—premodern textual data of the sort formerly confined to humanities scholarship, but also to prepare—and implement—a data-driven, solutions-focused humanities research environment centered on those same premodern Japanese texts.

Overview of the Plan



The Significance of a Data-driven Approach to Japanese Historical Documents

The oldest surviving Japanese historical work is the *Kojiki*, which dates back a full 1,300 years. Such continuity, with the existence of a written tradition stretching back over 1,000 years within a single country, is a notable phenomenon even when considered on a global level. The historical data found in texts produced over such a vast span includes various records concerned with the constitution of human society—ranging from memories of climate change and environmental history (including natural disasters) to wisdom touching on multicultural coexistence, records of how troubles of the human heart were faced, and of how society itself could recover after a suffered crisis.

Owing, however, to the particular properties of Japanese *washi* paper as a medium, these texts have had to be preserved in libraries and research institutions, with only very limited opportunities to be examined by anyone but field specialists, making any comprehensive use and analysis of the information they contain an arduous task.

This is the background to the foundation of the NIJL-NW Project for premodern Japanese texts, which aimed to build an environment in which the enormous amount of accumulated information in such texts, previously mostly hidden from view, was made available—as data—for swift access at need, and not only to scholars in other fields but to anyone at all, in Japan or abroad. Through our institute's NIJL-NW Project, an environment permitting anyone with an internet connection to freely access the complete image data of as many as 300,000 premodern Japanese texts is currently in the process of taking shape.

Our new project, building upon this structure 300,000-items strong, plans to further expand the coverage of its data accumulation to the Meiji period. By linking up with the bibliographic data already released by the National Diet Library spanning this earlier part of the modern period, we will be able to offer diachronic data spanning over 1,000 years, which we are processing to make machine-readable and ready for use by scholars in other fields, such as in the natural and social sciences. We aim, moreover, to make the results of collaborative research projects between humanities scholars and scholars in other fields likewise available as data, through a framework we plan to build that will encourage the circulation of such research results.

A Solutions-focused Paradigm for the Humanities

Research as conducted under a “solutions-focused paradigm” is research which, taking up various major problems facing contemporary society, directs itself in a comprehensive fashion towards the development of solutions for the same. For instance, when designing measures to deal with complex interrelated problems, such as environmental issues, it is necessary for researchers from many different fields to participate and work together collaboratively. By preparing the large-scale data produced by humanities research so as to make it more usable in fields like the natural and social sciences, the way is paved for those involved in humanities research to participate, actively, in efforts to confront those contemporary social issues.

The Project's Five Main Initiatives

The concrete details of this project are as follows.

Construction of Data Infrastructure

We will develop both the hardware and software aspects of the data-driven research system designed to serve as foundation for this project, creating also a plan for how it will operate, which we will then put into practical implementation.

- ① Developing a data-driven research system (basic stage)
- ② Drawing up guidelines related to issues of rights, etc.
- ③ Organizing an interdisciplinary data catalogue
- ④ Strengthening and expanding coordination functionalities

Applying the Results of Content Analysis

Based on the results of a quasi-collaborative research project currently being conducted, separately, by the National Institute of Informatics, the Research Organization of Information and Systems' Joint Support-Center for Data Science Research (ROIS-DS), the International Institute for Digital Humanities, and Toppan Printing Co., Ltd., we will develop analytical approaches and methods to integrate humanities data into data-driven models. This will involve the extraction of research material using AI technology and its subsequent application in other fields; the development of technology for analyzing and parsing texts, and also search technology adapted to non-textual information (such as images); as well as efforts to bring our own accumulation of data into conformity with international standards.

- ① Consensus-building regarding metadata assignment and the consideration of a universally-applicable framework for the same
- ② Increasing the accuracy of technology used to search and analyze images
- ③ Using AI technology to automate the production of machine-readable data
- ④ Developing tools for the international Text Encoding Initiative (TEI)



AI-based kuzushi-jī recognition technology
Image credit: Center for Open Data in the Humanities (CODH)

Applying the Results of Content Analysis

Transforming the kind of evidential data previously confined to use in the human sciences into data that can also be utilized by the natural and social sciences, we will engage in collaborative research projects directed towards the resolution of various issues facing contemporary society.

- ① The expansion of document-based disaster studies
- ② The construction of a document-based anthropology

Research collaboration with the National Institute of Polar Research
The “Meteorite 4D Project” (<https://hoshi-ishi4d.jp/>)



Material Analysis and Investigation

Japan's 1,000 years' worth of texts have not only the accumulated data of their written content to offer, but also all the data they themselves embody as physical objects. One of our aims is to establish a technological basis enabling the extraction—and analysis and investigation—of data from this material aspect of texts, on a scale only rarely attempted in the past.

- ① The construction of an experimental laboratory
- ② The establishment and effective mobilization of analytical technologies
- ③ The establishment of technologies for document restoration

Enhanced detail from a text of *Iroha tanka*,
obtained by high-resolution digital microscope



Promoting a Data-Driven humanities research

By constructing a data infrastructure, developing various technologies designed for humanities-focused data analysis, applying the results gained from content analysis, and employing techniques of material analysis and investigation—by integrating the full range of findings obtained through these four initiatives, we aim to sketch out what a more data-driven paradigm for the humanities might look like going forward.

Project to Build an International Collaborative Research Network for Pre-Modern Japanese Texts

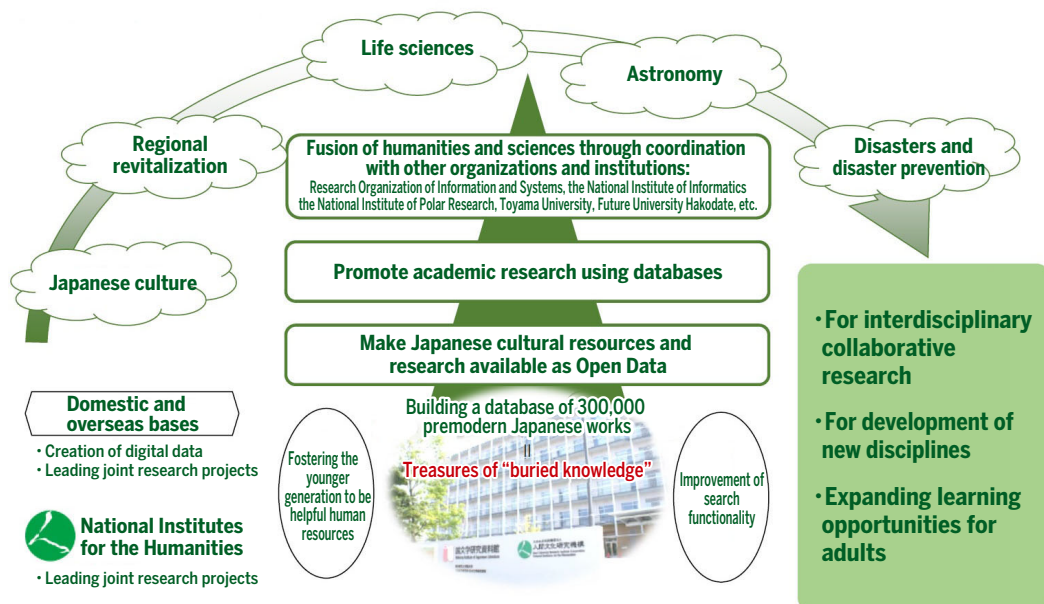
(abbreviation: NIJL-NW Project)

This project, headed by NIJL, is aimed at achieving the full digitization of approximately 300,000 titles of premodern Japanese texts in collaboration with universities and other institutions both inside and outside of Japan. These images are then incorporated into NIJL's pre-existing bibliographical database to produce a foundation for further research in the "Database of Premodern Japanese Works," which allows free search of images, the use of which can contribute to the construction of an international collaborative research network.

Such digitization of premodern Japanese works is also helpful against the various dangers that valuable cultural properties face (damage and deterioration of original archival materials and loss through natural disasters), contributing thereby to their successful preservation for inheritance by future generations.

We will promote collaborative research under this project on an international scale, not limiting it only to humanities but extending it also to the natural sciences, by utilizing the database to promote a fusion of humanities and science approaches.

NIJL-NW Project Summary



Implementation Plan

The scheduled period for this overarching project spans 10 years, from FY2014 to FY2023. We are working in general to promote collaborative research projects at an international scale and expand the "Database of Premodern Japanese Works" in concert with the themes of such collaborative research projects.

Images of premodern Japanese works will be collected, classified by field, and progressively made available to the public.

① Construction of a database of premodern Japanese works

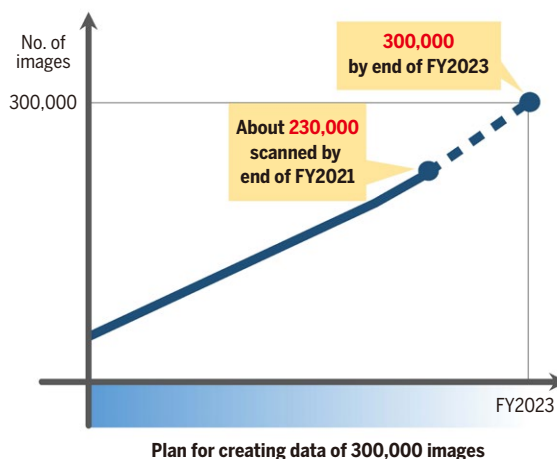
- ◆ Scanning 300,000 volumes of text
- ◆ Operating of the "Database of Premodern Japanese Works"
- ◆ Improvement of search functions/provision of multilingual functionality

② Establishment of an international collaborative research network

- ◆ Expansion of a network built on cross-disciplinary fusion

③ Promotion of international collaborative research

- ◆ Cultivation of research based on cross-disciplinary fusion
- ◆ Development of a field of "Comprehensive Bibliographical Studies"
- ◆ Promotion of research in the field of documentary tourism resources



Project Implementation Framework

For its partners in this project, NIJL is working with a number of other domestic organizations belonging to the National Institutes for the Humanities, and with bases at 20 public and private domestic universities, in addition to a number of research institutions in Japan and overseas, all alongside its cooperation with research institutions such as the National Institute of Informatics and the National Institute of Polar Research.

The Center for Collaborative Research on Premodern Japanese Texts is run by the Center's Steering Committee, the Network of Premodern Japanese Texts Committee, the International Collaborative Research Network Committee, the Base Cooperation Committee, and the Joint Council on Reporting on the Use of Materials, while drawing upon the opinions of experienced academic figures and the larger research community. A NW Project Implementation Committee was established at NIJL, under the direction of the Center's Steering Committee, to facilitate the understanding of all faculty members regarding this project as a whole and clarify their roles and responsibilities.

FY2021 Digitalization Progress (Approximately 38,000 Items in Total)

● Base Universities

Tohoku University, University of Tsukuba, Tokyo University, Kokugakuin University, Rikkyo University, University of Tokyo, Nagoya University, Kyoto University, Doshisha University, Osaka University, Kansai University, Ritsumeikan University, Kobe University, Hiroshima University, and Kyushu University

● Field-specific Highly Specialized Information Collection

Obihiro University of Agriculture and Veterinary Medicine, Miyagi University of Education, Ibaraki University, Josai University, Keio Institute of Oriental Classics, Senshu University, Tokyo Gakugei University, The University Art Museum Tokyo University of the Arts, Tokyo Keizai University, Hitotsubashi University, Nippon Sport Science University, Tokai University, Toyo University, Nishogakusha University, Yokohama National University, Shirayuri University, Seisen University, Kyoritsu Women's University, Otsuma Women's University Institute of Texts Studies, Niigata University, Shitenno-ji University, International Buddhist University, Soai University, Kogakkan University, Mukogawa Women's University, Okayama University, Yamaguchi University, Ehime University, University of the Ryukyus, Hirosaki City Public Library, Noda City Public Library, National Diet Library, National Institute for Japanese Language and Linguistics, Tokyo Shoseki Co., Ltd., Ken'ikai Library, The Ad Museum Tokyo, Sanko Library, Edo-Tokyo Museum, Shizuoka Prefectural Central Library, Rangyu Museum, Kyoto Institute Library and Archive, Nakatsu History Museum, British Library Board

The Database of Pre-Modern Japanese Works

The "Database of Pre-Modern Japanese Works," which is the basis for the NIJL-NW Project, was made available to the public in 2017. This database not only includes works of literature but also premodern documents related to medicine and science, as well as various other fields. It can therefore serve as a basis for interdisciplinary research with researchers from outside the humanities through collaboration with universities in Japan and other countries. This database will ultimately be expanded to include as many as 300,000 works.

Website:
<https://kotenseki.nijl.ac.jp/>



Summary and Features of the Database of Pre-Modern Japanese Works

As the only portal site for premodern Japanese works, this database can be used to view the abundant bibliographic data that has been accumulated over the years by NIJL, as well as to browse digital images of premodern Japanese works in the collections of various organizations both in Japan and overseas.

Point 1: Easy to Search

In addition to searches using titles or keywords, a number of different searches are possible, for example, image tags, full texts, recommended keywords, and highlighted contents.



Search Top Page

<https://kotenseki.nijl.ac.jp/>

Point 2: Easy to Cite

Adoption of the Digital Object Identifier (DOI) system, which attaches unique international identifiers to each electronic data record, guarantees permanent access and allows for easy citation in publications such as research articles.



新日本古典籍
総合データベース

<http://kotenseki.nijl.ac.jp/biblio/200021913>

Even if the database's URL changes, the DOI stays the same, ensuring no broken links.



<https://www.doi.org/>

Point 3: Easy to Use

Use of IIIF (International Image Interoperability Framework), a new digital archive standard, facilitates easy sharing and reuse of images even between different digital archives.



Image Viewer



<http://iiif.io/>



The following pamphlet is provided for reference when using the database:

“Pamphlet for the Database of Pre-Modern Japanese Works (with quick guide)”

Available at:

<http://www.nijl.ac.jp/pages/cijproject/>



This QR code leads to a PDF file of the pamphlet.

Working toward an Open Data Archive

For premodern Japanese works to be studied and used more freely, we are working toward making our materials more available on an open-data basis. To this end, the following three data sets have been made available to the public on the website of the Center for Open Data in Humanities (CODH) at the Joint Support Center for Data Science Research, as a part of our collaboration with CODH and the National Institute of Informatics, both within the Research Organization of Information and Systems.

All three data sets are made available under a Creative Commons Attribution-Share Alike (CC BY-SA) license, making these data accessible to anyone who agrees to the conditions of that license.

NIJL open data website: http://www.nijl.ac.jp/pages/cijproject/data_set_list.html

● Data set of Pre-Modern Japanese Text (PMJT)

Size: 3,126 items (as of March 2022)

In addition to Japanese literary texts, such as important cultural properties and other rare books, this set includes all kinds of premodern Japanese books in the collections of NIJL on, e.g., medicine, science, and industry, as well as books digitized by NIJL from the collections of the Ajinomoto Foundation for Dietary Culture, such as cook books.

Contents: (1) Digital images of premodern Japanese books (2) Bibliographical data (3) Textual data (4) Tag data
Website: <http://codh.rois.ac.jp/pmjt/>

● Kuzushi-ji Data set (formerly the Data set of PMJT Character Shapes)

Size: Character types: 4,645, Characters: 1,086,326 (as of March 2022)

Data on character shapes have been gathered from 28 different texts, the collections of both NIJL, and the Ajinomoto Foundation for Dietary Culture.

Contents: (1) Corrected digital images of original texts (2) Character coordinate data (3) Character image data
Website: <http://codh.rois.ac.jp/char-shape/>

● Data set of Edo Cooking Recipes

Size: 107 items

There are modern Japanese translations for 43 items, 34 of which have modern recipe data included.

Contents: (1) Digital images of original texts (2) Transliterated textual data (3) Modern Japanese translation data (4) Modern recipe data

Website: <http://codh.rois.ac.jp/edo-cooking/>

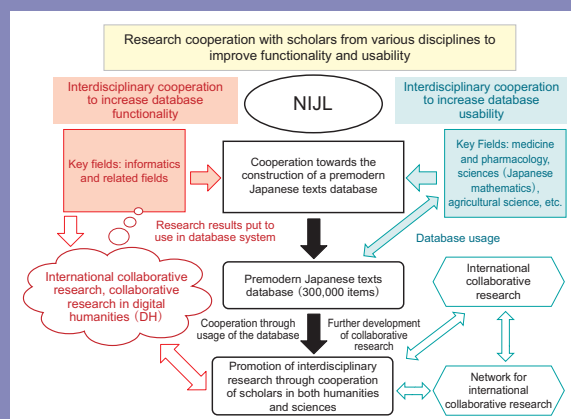
The data set is also available on the website of “Cookpad Edo Dishes.”

Collaborative Research

The main objective of this project is to bring to life the vast collection of premodern Japanese works housed at NIJL and other institutions. This aspect will be achieved through the construction of a research network that connects researchers from various disciplines, both in Japan and overseas. To realize such a goal, this project seeks to construct, in cooperation with a number of domestic universities, a database of 300,000 fully digitized texts spanning the full variety of fields. In addition, we will pursue advanced collaborative research projects that involve the participation of scholars from a broad diversity of disciplines.

Since 2014, collaborative research projects of a variety of types have been conducted, including (1) “International Collaborative Research” projects that make use of premodern Japanese texts in broad perspective, engaging primarily with scholars overseas on research topics that allow Japanese culture to be examined as a whole; (2) “Interdisciplinary Collaborative Research” projects conducted with, e.g., scientific researchers with the aim of making use of information scattered throughout premodern Japanese texts from a variety of genres; (3) “Inter-institutional Collaborative Research” projects conducted in concert with peer institutions among the National Institutes for the Humanities—the National Museum of Japanese History, the National Institute for Japanese Language and Linguistics, and the International Research Center for Japanese Studies; and “Collaborative Research Projects for Further Research Development” to promote, e.g., advances in search functionality.

Special consideration has been made in all these collaborative research projects to encourage the participation of young or female scholars, as well as scholars from overseas, and several of these projects have won international acclaim, involving researchers from over 40 different fields.



《FY2022 Collaborative Research Projects》

I International Collaborative Research

● Joint Research on Generating Metadata Linked to Images (2021–2023)

Unit A: Research on Generating Content Metadata (including its use as teaching material)

Unit B: Forming Digital-based Research Methods and Building International Information Bases

I Interdisciplinary Collaborative Research

● 4D Meteorite Project (on meteorites) (2020–2023)

Collaborating organization: National Institute of Polar Research and others

● Enhancing Interdisciplinary Studies in Humanities and Sciences to Utilize Historical Records for the Reduction of Disaster-based Damage and Adaptation to Climate Change (2020–2023)

Collaborating organization: Ibaraki University Global and Local Environment Co-creation Institute and others

● Developing Educational Programs Using ICT Based on Images of Premodern Texts (2020–2023)

Collaborating organization: Shinshu University

● Developing Educational Tools Using ICT Based on Images of Premodern Texts (2020–2023)

Collaborating organization: Toyota Technical College

● Building the Foundations of Education and HR Training Programs on Digital Humanities and Arts (2021–2023)

Collaborating organizations: International Institute for Digital Humanities and others

● Rediscovering Japanese Culture Based on Writings (Food and Clothing) (2022–2023)

Collaborating organization: Kyoto Prefectural University, Ritsumeikan University

In addition, the Institute plans to develop collaborative research in new fields such as zymology, infectious diseases, and marine resources.

Collaborative Research Projects for Research & Development

NIJL conducts collaborative research for development to promote improved search functions

- Collaborative Research on Converting Images into Text (Toppan)
- Extracting Non-text Keywords Using Word-spotting and Other Methods (Future University Hakodate)
- Comprehensive Research on AI-to-Text Solutions (National Institute of Informatics, Center for Open Data in the Humanities)
- Research on Improving Search Functions and Applying Research on Pre-Modern Works (National Institute of Informatics, Center for Open Data in the Humanities)
- Developmental Research on Text Encoding Initiative (International Institute for Digital Humanities, Hokkaido Gakuen University, and others)
- Applied Research on Information Processing of Books as Materials with High-dimensional Processing of Multidimensional Optical Information (Nara Institute of Science and Technology, Jissen Women's University Bungei Material Laboratory)
- Collaborative Research on Improving Algorithms in Digital Image Production and Cataloging (British Library, Shirayuri Women's College)
- Research on Next Release IIIF Viewer (University of Tokyo Historiographical Institute, International Institute for Digital Humanities)
- Studies on Research Tools Using Character Form Data (Nara National Research Institute of Culture Properties, National Institute for Japanese Language and Linguistics, and others)
- Preparatory Research on AI Translations into Modern Language (National Institute for Japanese Language and Linguistics and others)

Dissemination of Research Results and Public Relations Activities

To increase public awareness of these various projects, we are conducting press releases and live stream broadcasts of international conferences, in addition to promoting projects through activities that involve the participation of the public.

Press Releases Conducted FY 2021

We are actively conducting press releases about our own research results and the results of various collaborative research projects.

- April 16 (Fri), 2021 Materials from the POLA Research Institute of Beauty and Culture related to cosmetic culture were made available for online viewing as high-resolution digital images. Approximately 176 volumes of premodern texts and 349 *ukiyo-e* prints were released on April 16.
- July 7 (Thu), 2021 A memorandum was concluded between the National Institute of Japanese Literature and Tokai University Library on the construction of a database. Premodern texts in the Toen Bunko collection are to be digitized at NIJL.

NIJL-sponsored Symposia

- The 7th annual "International Conference on Pre-modern Japanese Texts" was held. As in the previous year, the conference was again conducted online and live streamed. Afterwards, a video archive of the conference was made publically available on the conference's dedicated website, accessible from the home page of the Center for Collaborative Research on Pre-Modern Japanese Texts.

<https://www.nijl.ac.jp/pages/cijproject/sympo2021.html>



Other Activities

- At the 6th Kansai Educational ICT Exhibition, held in Osaka, NIJL had a booth with demonstrations of the Database of Pre-Modern Japanese Works. (Thu/Fri, August 5-6, 2021)
- In collaboration with the Kobe University Graduate School of Humanities and Faculty of Letters, an online event was held titled "Humanities Research and DX: Developments and Possibilities." (Fri, August 20, 2021)
- At the 16th EAJS (European Association for Japanese Studies) International Conference in 2021, a presentation was given, titled "The Future Possibilities of DH in Japanese Studies (Part 2)." (Fri, August 27, 2021)
- "At the 31st EAJRS Conference in St. Petersburg (Russia), an online presentation was given, titled "Researching with online images and in libraries." (Thu, September 16, 2021)
- At the 23rd Library Fair & Forum, held online, NIJL presented content on the Database of Pre-Modern Japanese Works, and introduced the topic of digital image production. (Mon-Tue, November 1-30, 2021)
URL : <https://www.nijl.ac.jp/pages/cijproject/forlibrarians.html>
- Volume 5 of "Studies in Japanese Literature and Culture," an English-language online journal for sharing the results of international collaborative research projects, was published on Tue, March 22 2022.
URL : <https://www.nijl.ac.jp/pages/cijproject/sjlc.html>
- Two issues (Nos.16 and 17) of the newsletter "Fumi," dedicated to introducing the NIJL-NW Project, were published. These issues are available from our website in the form of pdf files.
URL : https://www.nijl.ac.jp/pages/cijproject/newsletter_fumi_new.html

Publicly Available Databases

The institute maintains various databases for purposes of research into Japanese literature and other related fields. The following databases are available from the database page of our web site:
[https:// www.nijl.ac.jp/search-find/#database](https://www.nijl.ac.jp/search-find/#database)

| | |
|--|--|
| Book and Periodical Holding List (OPAC) | A catalog of books and periodicals (serial publications) since the Meiji era held by the NIJL. |
| Database of Research Theses in Japanese Literature | A catalog of Japanese literature theses from 1888 (Meiji 21) to present. |
| Database of Premodern Japanese Works | Classical works database*1 constructed by "Historical and classical works NW Project." |
| Union Catalog of Early Japanese Books | Comprehensive catalog of both bibliography and holdings information about Japanese classics and literary works and authors (reference information). |
| Catalog of Early Japanese Books at NIJL | Catalog of early Japanese books in NIJL's collection. |
| Database of the Texts of Selected Classical Works | Enables full-text searches and image browsing of the Institute's collection of the following works: Nijūichi-dai Shū (Anthologies of the One and Twenty Reigns), E-iri Genji Monogatari (The Illustrated Tale of Genji), Azuma Kagami (Mirror of the East), and Rekishi Monogatari (Stories from History). |
| Digital Image Database of Japanese Classics in Collaboration with Collection-owning Institutions | NIJL cooperates and collaborates with organizations in possession of premodern materials to build this database allowing users to search for and browse images of premodern works on the NIJL website. Currently available items include those from the tokuhon collection of Hiroshima University Library, microfilm image data belonging to the Imperial Household Agency, Archives and Mausolea Department, and the "Tsugaru Digital Fudoki." |
| Inventory of Early Japanese Books | Contains primary bibliographic information from the "literature and materials research cards" of manuscripts, editions, etc., held domestically and overseas that the NIJL has researched. |
| Bibliographic and Image Database of Japanese Modern Times | Public release of results of research and collection of literature materials centering on Japanese literature in and since the Meiji period. |
| Archival Holdings on Japanese History | Database of overview and catalog of the NIJL historical materials (archives), focused on historical materials from the old collections. |
| The Kornicki Union Catalog of Early Japanese Books in Europe | Database of bibliographic and location information on Japanese books held in libraries, museums, etc., in Europe. |
| Publishing and Advertisement Database in Meiji Era | With the aim of exploring publishing circumstances in modern Japan, it is a collection of publication advertisements printed in newspapers and magazines in the early Meiji period. |
| Historical Figure Image | Database of images of primarily classical characters up to the Meiji period from illustrated biographies contained in classical Japanese works. Biographies and bibliographical introductions are compiled as a database containing the contents of bibliographical introductions of biographies and the characters appearing in the books and microfilms owned by us. |
| Renga-Ennou-Garaku Database | Open database linked with a Renga and Ennou databases that included a newly produced Gagaku database. |
| New Naraehon Database | Open database of original text images for Naraehon (19 books) held by the NIJL (accompanies republication). |
| Kojiruien Database | Database that offers full-text and browsing of the Kojiruien (Dictionary of Historical Terms) that covers institutions, cultural assets, and society in Japan from ancient to early modern times. |
| Biography Bibliography Database | Database of biographical information related to the research of Japanese classics. Currently contains the Nihon Jinmei Jiten and Jigekaden. |
| Fragmentary Manuscripts Database of Japan | Database of printing information for ancient writing fragments since the Kohitsu-gire Teiyo. |
| International Collaboration for Japanese Literary Studies | A database of bibliographic information, images, translations, etc., for overseas research papers. |
| Collectors' Seals Database | Database of ownership stamp information derived from original copies with a focus on classic books held by the NIJL. |
| Bibliographical Database of Archival Studies in Japan | Database of research literature in Japan related to archival studies. Individual documents containing chapters are all entered in "Content." |
| Database of the Location of Historical Materials | This database provides essential information about the location and content of various collections of historical materials currently stored throughout Japan. |
| Japan Museum of Business and Industry Collection Database | Open database of materials information and images pertaining to pictorial art utensils and advertisements from the Establishment Office of the Japan Museum of Business and Industry. |
| NIJL Database of Detailed Shrine Records | Database of shrine names, locations, and structures prior to WWII taken from detailed shrine records throughout Japan. |
| EGAWA Family Papers Database, Nirayama, the Province of Izu | This database is a joint project with the Egawa Foundation for Preservation of Historic Properties and displays bibliographic information for old texts and literature held by the Foundation. |
| Archival Location Information and Search System | Database for location and overview of materials originating from different locations throughout Japan (user registration required for detailed version). |
| Tajiro Masuda Advertisement Collection Database | A database of publication information and images of advertisements collected by Tajiro Masuda. |
| Early Modern Period Vocabulary Card Database | Database of approx. 150,000 early modern vocabulary cards including Kabuki and Joruri. |
| Directory of Overseas Collection of Old and Rare Japanese Books, Other Print Materials, and Manuscripts | An English (with some Japanese) listing of the contact addresses, viewable collections, and so on for institutions outside Japan that hold Japanese Classics. |
| Hanashibon taikai Database | This database provides a searchable version of the full text of Hanashibon taikai (published by To-kyo-do). |
| Nihonkotenbungaku taikai Database | This database enables the user to search the full text of the former version of the Nihonkotenbungaku taikai (Japanese Classics) (available to higher educational institutions such as universities and junior colleges). |
| Database of the Fondo Mario Marega | Public release of documents related to Christianity and catalog/images of materials on Marega gathered by Mario Marega. |

(as of April 1, 2022)

*1: See Page 11 for the Database of Premodern Japanese Works.

*2: See the website for the academic information repository: <https://kokubunken.repo.nii.ac.jp>

Activities Overview

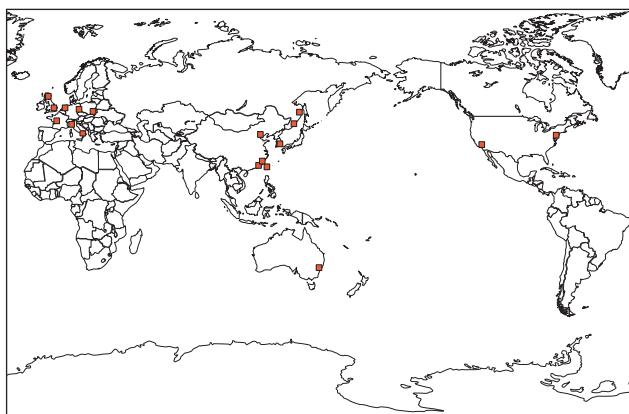
Aims of the Work undertaken by NIJL

This institute performs specialized surveys and research on documents of Japanese literature and related fields housed at institutions both in Japan and overseas. It also seeks to expand its own collection of original materials and photographic facsimiles, organize and preserve information gathered on such materials' location and bibliography, and provide a foundation for the study of Japanese literature and related fields. It also makes its materials available in various ways to users in Japan and abroad, while contributing back to the society through initiatives such as exhibits and lecture meetings.

1 Surveying and Collecting

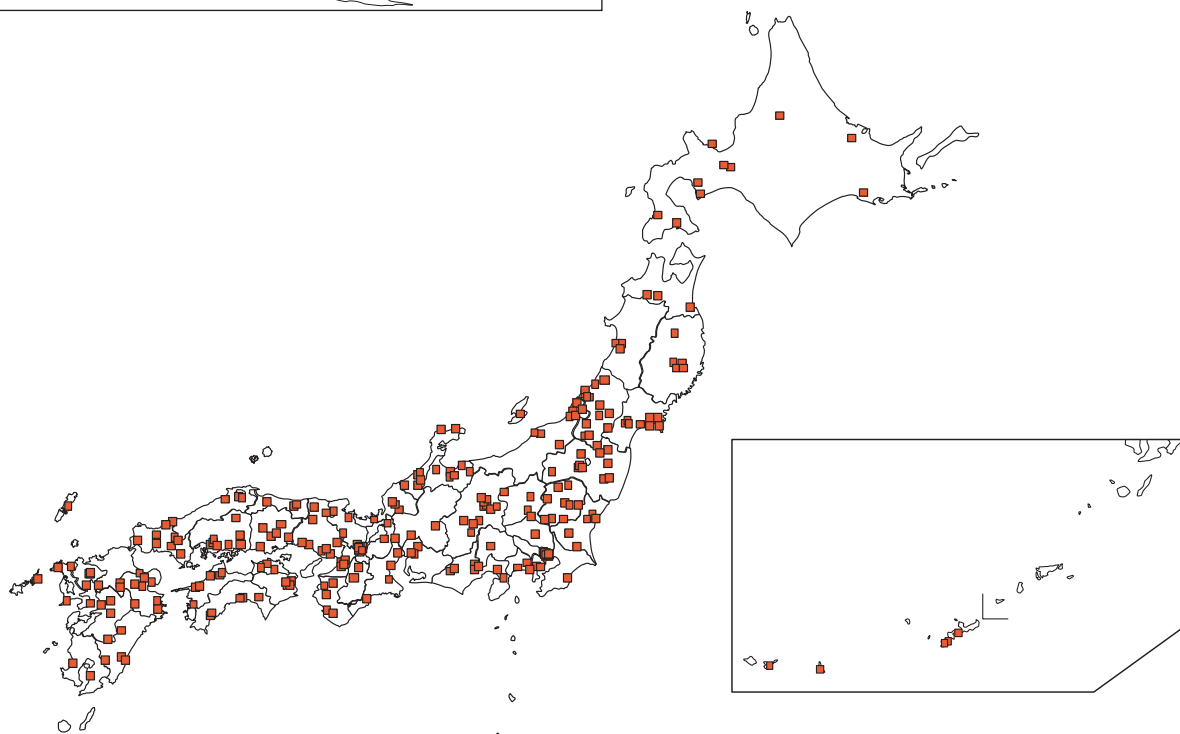
In collaboration with researchers from universities throughout Japan, institute personnel travel to the sites of collection of original documents—such as manuscripts and printed editions—related to Japanese literature and engage in research with a bibliographical focus.

In conjunction with such research, original materials stored in libraries and archives throughout Japan are added to NIJL's own collections through full-volume photography by means of microfilm or digital images and thereby made available to the general public.



Items Surveyed or Collected to Date

| | | | |
|-----------|----------|-----------------|---------------|
| Surveyed | Japan | 1,035 locations | 423,906 items |
| | Overseas | 67 locations | 16,367 items |
| | Total | 1,102 locations | 440,273 items |
| Collected | Japan | 391 locations | 219,358 items |
| | Overseas | 13 locations | 1,518 items |
| | Total | 404 locations | 220,876 items |



■ List of Locations Surveyed FY 2021

| |
|--|
| Kanto Region |
| Saimyouji Temple |
| Chugoku / Shikoku Region |
| Tottori Prefectural Museum |
| Tezen Museum |
| Masamune Bunko |
| Hikari City Cultural Center |
| Kochi Castle Museum of History |
| Kyushu/Okinawa Region |
| Yutoku Inari Shrine (Nakagawa Bunko) |
| Oita Prefecture Ancient Sages Historical Archives |
| Modern Materials |
| Ad Museum Tokyo |

■ List of Locations Collected FY 2021

| |
|--|
| Hokkaido / Tohoku Region |
| Miyagi Prefectural Library |
| Kanto Region |
| The Imperial Household Agency, Archives and Mausolea Department |
| Hosei University (Kozan Bunko) |
| Chubu Region |
| Toyama City Public Library (Yamada Yoshio Bunko) |
| Hamamatsu City Kamono Mabuchi Memorial Hall |
| Kinki Region |
| Kyoto Women's University (Roan Bunko) |
| Zuiko-ji Temple |
| Chugoku / Shikoku Region |
| Tottori Prefectural Library |
| Tezen Museum |
| Masamune Bunko |
| Hikari City Cultural Center |
| Sohonzan Zentsuji Temple |
| Yasuda Women's University Library (Inaga Bunko) |
| Kochi Castle Museum of History |

| |
|---|
| Kyushu / Okinawa Region |
| Yutoku Inari Shrine (Nakagawa Bunko) |
| Hizen Shimabara Matsudaira Bunko |
| Matsura Historical Museum |
| Hirose Museum |
| Modern Materials |
| Kagoshima Modern Literature Museum |
| Other Archive |
| EGAWA Bunko |

*Honorific titles of owners
have been omitted.

2 Public Access to NIJL's Collections

The institute's library allows the perusal of documents and provides various copy services. It is also possible for users in remote locations to access documents and copy services through the interlibrary loan system. Those not affiliated with any university can request copies directly by post, fax, or email. In addition, collections inquiries by telephone and reference questions submitted by post, fax, or email are also accepted.



Library

Library Services Guide

| | | | |
|------------------|----------------------------|--|---|
| Service Hours | Hours of Operation | Weekdays | 9:30–18:00 (Historical documents and valuable materials are available only between 9:30–17:30) |
| | | Saturdays | 9:30–17:00 (Historical documents and valuable materials are available only between 9:30–16:30) |
| | Closed Stack Requests | Weekdays | 9:30–17:00 |
| | | Saturdays | 9:30–16:00 |
| | Copy Services | | 9:30–16:00 |
| Closed | | | <ul style="list-style-type: none"> • Sundays and public holidays • 4th Wednesdays of every month • Summer holiday (August 12–16) • New Year holiday (December 27–January 5) • Annual collections inspection period (February 20–25) (In addition, the institute may be close for other reasons. Please check posted signs and the institute's web page.) |
| Services Offered | Collections | Microfilm, Japanese rare books (manuscripts and print editions), historical documents, printed books, photographic facsimiles, books on local history from across the country, and periodicals. (On Saturdays, historical documents, rare books, special collections, and books on loan to the library can only be viewed by prior appointment.) | |
| | Photo duplication Services | Electronic photocopying (including photocopying using a reader printer) and positive films (excluding historical documents) | |
| | Photography | Historical documents and other such materials excluded from electronic photocopying | |
| | Lending | Overnight lending of printed-out facsimile copies (some books excluded) | |
| | Lending for Exhibitions | Lending for exhibitions at libraries, archives, museums, etc. | |
| | Reference Research | Accepting and responding to questions and requests for document searches | |
| | Interlibrary Loan | Photocopying and lending through the interlibrary loan system (ILL) | |
| Inquiries | Phone | Usage in General : 050-5533-2926, Information Services Section Interlibrary Loan (ILL): 050-5533-2926, " Historical documents: 050-5533-2930, " Use in Publications: 050-5533-2930, " | |
| | F A X | 042-526-8607 | |
| | E-mail | etsuran@nijl.ac.jp | |

Materials in NIJL's Collections

| Types of Materials | | | No. of Items, etc. | No. of Volumes, etc. |
|---|--|---------------------|--------------------|----------------------|
| Microfilm Materials | Microfilm | Japanese Literature | 195,097 items | 38,192 reels |
| | | History | 202 items | 6,308 reels |
| | Printed Photographic Facsimiles | Japanese Literature | — | 68,935 volumes |
| | | History | — | 11,196 volumes |
| Books | Premodern Japanese texts | | 18,346 items | 61,381 volumes |
| | Printed books, printed-out photographic facsimile copies, etc. | | 112,348 items | 197,034 volumes |
| | Periodicals | | 9,450 publications | — |
| | Microfiche | Japanese Literature | 16,667 items | 57,358 sheets |
| Historical Documents | | | 505 items | about 520,000 items |
| Historical Documents and Other Materials on Loan to the Library | | Japanese Literature | 13 items | 9,540 volumes |
| | | History | 17 items | 6,847 items |

Representative Collection Materials

Materials Related to Japanese Literature

Rare Books

Kasuga Kaishi (Important Cultural Property), a 1682 Aratoya edition of *Koushoku Ichidai Otoko*, an illustrated old moveable-type edition of *Soga Monogatari*, a Kamakura-era manuscript of *Shin Kokin Wakashu*, a Nara ehon edition of *Utsuho Monogatari*, the *Shin Kokin Wakashu Senka Soko*, and a Kamakura period manuscript of *The Tale of Genji* (16 chapters) (217 items in all)

Special Collections

Kokin Wakashu (Collection of Ancient and Modern Poetry) and related works formerly owned by Kyoichi Nishishita (Hatsukari Collection); anthologies of Chinese poetry from the Edo and Meiji periods formerly owned by author Shinichiro Nakamura (Japanese Chinese Poetry Collection); *Essays in Idleness* and other works (Isao Kojo Collection); a collection centered on the *Shin Kokin Wakashu* (New Collection of Ancient and Modern Poetry) (Kaifu Rogetsu Collection); diaries, records, and documents related to court lore, literature, and the performing arts from the Tayasu Tokugawa family (Tayasu Tokugawa family materials (Denpan Bunko)); books, documents and records collected by Ikujiro Ukai, a politician of the Meiji era (Ukai Bunko); a collection including works by Soko Yamaga (Yamaga Bunko); a collection centered on *The Tales of Ise* and related works (Tesshinsai Bunko); and 24 others.

Materials on Loan to the Library

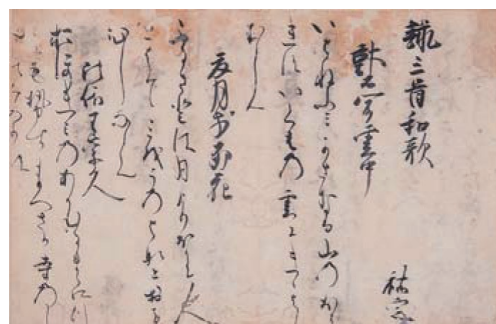
Materials from 13 collections, including, among others, six items from the collection of KANEKO Motoomi, 156 items from the ancient manuscript fragment collection of SAKATA Yasuyoshi, and 50 boxes containing 6,690 pages of documents from the Masuda Collection.

Historical Documentary Materials

The Historical Materials collection focuses on the early modern and modern periods and contains over 520,000 items, covering nearly every region of Japan.

The early modern materials consist for the most part of town- and village-level documents (such as the Owari no Kuni Nagoya Moto Zaimokucho Inuyamaya Kandoke documents, and the Shinano no Kuni Takaigun Higashi Ebemura Yamada Shozamonke documents), but they also contain warrior-class documents (such as the Shinano no Kuni Matsushiro Sanadake documents, the Awa no Kuni Tokushima Hachisuka documents, and the Yamashiro no Kuni Yodo Inabake documents), court-family documents (such as the Yamashiro no Kuni Kyoto Sanjonishike documents), and documents from religious institutions (such as the Yamashiro no Kuni Kadonogun Saga Tenryūji Tacchū Rinsenji documents).

The modern collections contain documents dealing with prefectural, municipal, and village-level government (such as the Aichi Prefectural Office documents and the Okayama, Hiroshima, and Tottori Prefectural and Municipal documents).



Kasuga kaishi
(National Institute of Japanese Literature collections)



Closed Stacks

3 International Exchange

Japanese literature is a field of study pursued throughout the world. An important challenge facing Japanese literary research today is learning to perceive Japanese literature from a variety of different research viewpoints and methods. Based on such an awareness, NIJL has established the International Collaboration Division to revitalize activities of international exchange. As part of this, we have actively engaged in a number of activities in Japan and overseas, such as the hosting of various symposia, seminars, and conferences devoted to research on premodern Japanese texts.

Furthermore, NIJL's specialized Global Consortium for Japanese Textual Scholarship was established as a private organization on November 1, 2020, together with participating organizations in Japan and overseas, as a space for sharing limited resources among multiple organizations and for complementing one another's strengths in the study of Japanese classical literature. The secretariat for this consortium is at NIJL. As of the end of March 2022, there are 82 participating organizations (41 in Japan and 41 overseas). <https://kotenseki.org/>

Academic Exchange Agreements

As an international center for research on Japanese literature, NIJL is actively engaged in a variety of academic exchange projects with researchers and research institutions overseas. In particular, it is the conclusion of academic exchange agreements with overseas institutions that makes stable, ongoing research exchange possible.

Activities center on the exchange of researchers between institutions in Japan and overseas, as well as the hosting of international research symposia. They also include the implementation of joint surveys and joint research projects and extend to the hosting of graduate students for short-term training.

Presently, academic exchange agreements have been concluded with the following overseas institutions:

- Collège de France, Institute of Advanced Japanese Studies (France)
- Ca' Foscari University of Venice, Department of Asian and North African Studies (Italy)
- Orientale University of Naples (Italy)
- Sapienza University of Rome, Italian Institute of Oriental Studies (Italy)
- University of Florence, Department of Education, Languages, Intercultural Studies, Literatures and Psychology (Italy)
- Beijing Foreign Studies University, Beijing Center for Japanese Studies (China)
- Leiden University, Faculty of Humanities (The Netherlands)
- The University of British Columbia, Faculty of Arts, Department of Asian Studies (Canada)
- Columbia University, Department of East Asian Languages and Cultures (the U.S.)
- Korea University, Global Institute for Japanese Studies (Republic of Korea)
- University of California, Berkeley, C.V. Starr East Asian Library (the U.S.)
- Berlin State Library (Germany)
- Vatican Apostolic Library (Vatican City State)
- University of Hawaii at Manoa, Department of East Asian Languages and Literatures (the U.S.)
- Heidelberg University, Institute of Japanese Studies (Germany)
- Goethe University Frankfurt am Main, Faculty of Linguistics, Cultures, and Arts (Germany)
- British Library Board (the U.K.)
- The Smithsonian Institution (Freer Gallery of Art & Arthur M. Sackler Gallery) (the U.S.)
- Inter-University Center for Japanese Language Studies

International Conference on Japanese Literature Workshops (Materials Workshop)

When the International Conference on Japanese Literature was rescheduled to May to allow more foreign students to attend, three ICJL workshops were held in its stead in FY2020. These workshops provided practical guidance on a variety of subjects: on research history and research topics for studies utilizing premodern Japanese texts, on the handling of such premodern texts, on the use of NIJL's databases, etc. Given the positive reception, we held three further workshops in FY2021, with plans to continue the series, online, in FY2022.

International Conference on Japanese Literature (ICJL)

This conference, devoted to the advancement of research on Japanese literature, has long been held annually to both nurture young specialists in the field and deepen exchanges between scholars of Japanese literature from Japan and overseas. Traditionally, ICJL was held every year in the fall, but beginning with the 44th annual conference, it was moved up to early May in order to make it easier for foreign students to participate. The 45th conference will be held online, in line with measures to curb the spread of COVID-19.

Dates: Sat/Sun May 14-15, 2022

Venue: Online (Zoom Meeting and
YouTube Live Stream)



44th ICJL poster
(May 8-9, 2021 - 160 participants total)

Seminars on Premodern Japanese Books

We hold seminars focused on the bibliography and literary culture of premodern Japanese books, one of the foundations of Japanese culture, in collaboration with overseas researchers and research institutes.

| | | |
|------|--------------|--|
| 7th | Feb 26, 2019 | Beijing Foreign Studies University, Beijing Center for Japanese Studies (China) |
| 8th | Mar 1, 2019 | University of Hawaii at Manoa and the Honolulu Museum of Art (the U.S.) |
| 9th | Feb 27, 2021 | Held online (jointly with the Beijing Foreign Studies University, Beijing Center for Japanese Studies) |
| 10th | Mar 19, 2022 | Held online (jointly with the Beijing Foreign Studies University, Beijing Center for Japanese Studies) |



The 7th Seminar on Premodern Japanese Books



The 8th Seminar on Premodern Japanese Books

Exchange with Overseas Researchers (Foreign and Outside Researchers)

To promote the internationalization of research on Japanese literature, we invite research fellow scholars from abroad who are active on the front lines of research into Japanese literature and other related fields, thus offering our institute as a site for the use of academic resources and exchanges of expertise.

4 Community Outreach Activities

NIJL contributes to the society by widely publicizing the results of its research via exhibitions, lectures, symposia, and various seminars.

Exhibitions

The institute hosts exhibitions in its first-floor exhibition room to showcase the results of its documentary surveys and other collaborative research projects.

Planned Exhibitions for FY2022

Special Exhibition:

“50th Anniversary Exhibition: My Favorite Text at the National Institute of Japanese Literature”

May 13 to August 31, 2022

Our 50th anniversary commemorative exhibition consists of the following three chapters. Chapter 1, "Recommended Books," introduces the works that our researchers in Japanese literature or history and archives select one for each in the NIJL collection. Other our researchers in the field of informatics introduce research that are linked with Japanese literature. Chapter 2, "Opening NIJL," setting up seven themes, showcases works that are rarely used in our exhibitions. Chapter 3, "Past and Future of NIJL," presents materials related to the history of NIJL, looking back with photographs. We hope that visitors will enjoy the unique premodern Japanese texts carefully selected by our researchers.



Exhibition room

Regular Exhibition:

“Japanese Literary History Based on Documents” Planned to be held from October 19, 2022, to January 25, 2023

This exhibition trace the history of Japanese literature from ancient times until the early Meiji period by books (premodern Japanese texts). While taking into account recent research trends, the exhibition has shown the flow of literary history by focusing on works that are familiar from textbooks. The exhibition is designed to allow visitors to enjoy various aspects of the rich history of Japanese classical literature while experiencing the appearances of manuscripts and the texture of woodblock-printed books.

Regular Exhibition:

“Various Japanese Writings” Planned to be held March 1 to late May, 2023

This exhibition introduces manuscripts, woodblock-printed texts, and particularly unique texts from each period after giving explanation of the morphological first and then the content structure of Japanese books. The exhibition is intended to provide visitors with a basic knowledge of Japanese books as well as an opportunity to think about Japanese books.

Special Section

During the regular exhibition period, a special section will be set up in a part of the exhibition room to display newly collected materials.

Lecture Series

(1) Archives College

Long- and short-term courses are offered for the purpose of cultivating staff specialized in tasks such as archival record preservation and the provision of user services. The long-term lecture course will be held over a total of six weeks from Tuesday, July 19 to Friday, August 5, and from Monday, August 22 to Friday, September 9 at the NIJL. The short-term course is planned for the period from Monday, November 7 to Saturday, November 12 at the Tomioka Town Art & Media Center “Manabi no Mori” in Tomioka-cho, Fukushima prefecture.

(2) Workshop on Pre-Modern Japanese Books

This workshop, held in cooperation with the National Diet Library, seeks to impart to librarians from Japan and abroad who deal with premodern Japanese books the requisite basic knowledge about such books and their handling.

Planned to be held online (Zoom) in FY2022 for four days from Tuesday, July 12 to Thursday, July 15.



2021 Archives College Short-Term Course

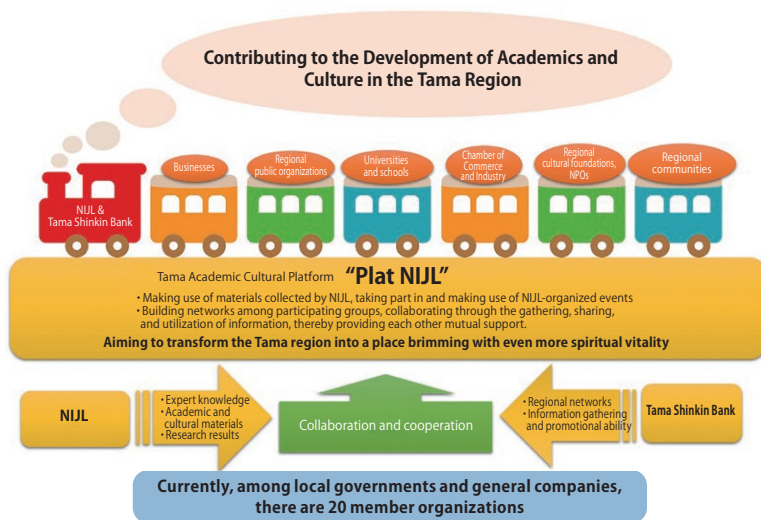


Workshop on Pre-Modern Japanese Books (2019)

The Tama Academic Cultural Platform "Plat NIJL"

NIJL concluded an agreement with Tama Shinkin Bank to establish the Tama Academic Cultural Platform "Plat NIJL," to be constituted with NIJL at its core, by various businesses, local government bodies, universities, and other groups as a platform to ensure the continual implementation of projects promoting academic research and cultural activities in the Tama Region.

"Plat NIJL" projects will involve the holding of courses and lectures on academic research and cultural activities in the Tama Region, collaboration and cooperation with various groups to make use of NIJL materials and databases, and the promotion of industry-academy cooperation in general.



Please address inquiries to Staff in charge of Plat NIJL,
National Institute of Japanese Literature
Email: platform@nijl.ac.jp

Projects for FY2021

- NIJL Cafe
- Talk Series: Discussing Japan's Classics and the Modern Era with Creators
The 8th session: KAWASE Naomi and Robert Campbell



NIJL Cafe

NIJL Arts Initiative: Innovation through the Legacy of Japanese Literature

Since October 2017, we have been implementing the project, the NIJL Arts Initiative: Innovation through the Legacy of Japanese Literature. This project is to bring artists from various fields and non-native Japanese translators into contact with our rich collection of premodern texts and to co-create new cultural and artistic values through the creative workshops with our researchers.

In the residency program, we invite artists-in-residence (AIR) and translators-in-residence (TIR) to hold workshops with our researchers to create a wide variety of works that transcend existing frameworks through exchanges of opinions and mutual inspiration on premodern texts.

A "classics interpreter," a young researcher with expertise in Japanese classical literature, will support this creative process. Working closely with AIR/TIR, the "classics interpreter" assists the creative activities by building a bridge between AIR/TIR and researchers. In addition, the "classics interpreter" disseminates Japanese culture both domestically and internationally from various angles, including translation of activity records into multiple languages, SNS, and websites while collaborating with private companies and local governments.



Creative Workshop



Talk Event

Website for the NIJL Arts Initiative
<https://www.nijl.ac.jp/pages/nijl/en/>



Researchers (as of April 1, 2022)

Director General

| Name | Research Interests |
|------------------|--------------------|
| WATANABE Yasuaki | History of waka |

Research Department

| Name | Position | Research Interests |
|--------------------|--|--|
| IRIGUCHI Atsushi | Professor, Deputy Director General (in charge of planning and coordination) | Early modern literature |
| KANSAKU Ken'ichi | Professor, Deputy Director General (in charge of research) | Early modern Japanese literature, particularly the history of waka and the arts |
| UNNO Keisuke | Professor (Director) | Medieval literature, waka literature and the history of classical scholarship, with a focus on the Imperial Court |
| OCHIAI Hiroshi | Professor (Director) | Medieval literature, medieval performing arts and the bibliographical study of Japanese classics |
| NISHIMURA Shintaro | Professor (Director) | Preservation of historical records in areas affected by the Fukushima nuclear disaster, editing of the <i>Oaza Magazine</i> |
| FUJIZANE Kumiko | Professor (Director) | Political culture of early modern and restoration-era Japan and the establishment of documentary book studies |
| YAMAMOTO Kazuaki | Professor (Director) | Research on 19th-century Japanese literature |
| SAITO Maori | Professor, *Director of the Department of Japanese Literature (SOKENDAI) | Medieval literature |
| WATANABE Koichi | Professor | Early modern Japanese urban history and archives studies |
| OYAMA Keizo | Visiting Professor | Research on informatics, information retrieval, and the construction and collaborative use of data sets to be used in research |
| AIDA Mitsuru | Associate Professor | Japanese literature of the Heian and medieval periods; Study of scholarship and commentary, with a focus on children's educational texts; and setsuwa literature; humanities information studies |
| AOKI Mutsumi | Associate Professor | Historical materials preservation |
| AOTA Sumi | Associate Professor | Modern Japanese literature, particularly criticism and novels of the Meiji and Taisho eras |
| OTA Naohiro | Associate Professor | Regional government in early modern Japan and early-modern archives studies |
| KATO Kiyofumi | Associate Professor | Relations between East Asia and Japan since the beginning of the modern era |
| KIGOSHI Shunsuke | Associate Professor | Early modern Japanese literature, particularly the history of the novel |
| DAVIN Didier | Associate Professor | Medieval Buddhism and literature |
| TADA Kurahito | Associate Professor | "Citations" in modern Japanese literature |
| NAKANISHI Satoko | Associate Professor | Heian-period literature and narrative literature |
| NOMOTO Tadashi | Associate Professor | Advance of information usage in the study of Japanese literature |
| MATSUDA Kuninori | Associate Professor | Utilization of computing technology in the humanities |

| Name | Position | Research Interests |
|--------------------|---|---|
| YAMAMOTO Yoshitaka | Associate Professor | Japanese literature in Classical Chinese, particularly of the Edo and Meiji periods |
| KIKUCHI Nobuhiko | Specially appointed Associate Professor | Digital history, digital public history, and the modern and contemporary history of Spain |
| HONDA Keisuke | Specially appointed Associate Professor | Indicators of evaluation in the humanities and social sciences |
| EDO Hideo | Assistant Professor | Heian-era literature, narratology |
| KNOTT Jeffrey | Assistant Professor | Classical studies and the reception of classical literature in medieval Japan |
| KUME Shiori | Specially appointed Assistant Professor | Japanese oral performance literature (<i>kowakamai</i> , <i>sekkyo</i> , <i>ko-joruri</i>) from the end of the medieval to the beginning of the early modern period |
| KOU Iku | Specially appointed Assistant Professor | Medieval Japanese literature, comparative literature of Japan and China, with a focus on comparative studies of Japanese and Chinese narratives |

Classical text data-driven research center

| Name | Position | Research Interests |
|------------------|---|--|
| OOYAMA Keizou | Director (dual post) | Research on informatics, information retrieval, and construction and collaborative use of data sets to be used in research |
| UNNO Keisuke | Deputy Director (dual post) | Medieval literature, waka literature and the history of classical scholarship, with a focus on the Imperial Court |
| YAMAMOTO Kazuaki | Professor (dual post) | Research on 19th-century Japanese literature |
| KIGOSHI Shunsuke | Associate Professor (dual post) | Early modern Japanese literature, particularly the history of the novel |
| MATSUDA Kuninori | Associate Professor (dual post) | Utilization of computing technology in the humanities |
| KIKUCHI Nobuhiko | Specially appointed Associate Professor (dual post) | Digital history, digital public history, and the modern history of Spain |

Center for Collaborative Research on Premodern Texts

| Name | Position | Research Interests |
|-------------------|---|---|
| YAMAMOTO Kazuaki | Director (dual post) | Research on 19th-century Japanese literature |
| KANSAKU Ken'ichi | Deputy Director (dual post) | Early modern Japanese literature, particularly the history of waka and the arts |
| NAGASAKI Kiyonori | Visiting Professor | Research on the digitalization of humanities information (especially in relation to data publication and the fostering of young talent in humanities informatics) |
| KITAMURA Keiko | Associate Professor | Theory of information science in relation to humanities |
| MATSUDA Kuninori | Associate Professor (dual post) | Utilization of computing technology in humanities |
| IKUURA Hiroyuki | Specially appointed Assistant Professor | Medieval poetry, women's literature, and the bibliography of premodern Japanese texts |
| IGURO Kahoko | Specially appointed Assistant Professor | Picture scrolls and picture books from the medieval to the beginning of the early modern period |

Support for Young Researchers

■ Special Inter-University Research Fellows

At the request of national, public, and private universities, in FY1979, the Graduate School Education Collaborative System was established to promote cooperation in graduate-level education and began accepting graduate students. The program later expanded participation in 1998 with the inauguration of the Special Inter-University Research Fellows Program.

Students currently studying Japanese literature and related subjects in doctoral or master's programs at domestic national, public, and private universities are eligible for acceptance as Special Inter-University Research Fellows and provided at NIJL with the supervision they need. NIJL hosts around ten fellows in total at a time, each as a general rule for a period of one year, beginning in April and ending the following March.

| Fiscal year | 2017 | 2018 | 2019 | 2020 | 2021 |
|----------------------|------|------|------|------|------|
| Total Active Fellows | 2 | 2 | 6 | 6 | 4 |

■ Events Aimed at Young Researchers

■ International Conference on Japanese Literature (ICJL) (FY2021 results)

- Overview: Online research presentations (oral presentations)
- Poster presentations (information session)
- 14 research presentations, divided into 5 sessions (including 12 young researchers)
- 7 poster presentations (including 4 young researchers)
- Participants: 160 (2 days' total)

■ Materials Workshop Series (FY 2021)

- 3 Online sessions, held on April 27, July 1, and September 9.
- Participants: 75 in total, mainly from the U.S., Japan, Canada, and China

■ Workshop on Pre-modern Japanese Books (FY 2021)

We hold a series of trainings providing introductory-level knowledge on the bibliography of premodern Japanese texts, aimed in particular at young researchers. In FY 2021, the training program was scheduled on the first and second days of the 19th "Workshop on Pre-Modern Japanese Books."

■ Prize in Classical Japanese Literary Scholarship (Sponsored by the National Institute of Japanese Literature Support Association)

The "Prize in Classical Japanese Literary Scholarship" is a continuation of the "Japanese Classical Literature Association Award" sponsored by the "Japanese Classical Literature Association" foundation, established as the "National Institute of Japanese Literature Support Association" with the goal of encouraging and aiding young researchers of classical Japanese literature.

Eligible recipients of the award (as many as three per year) must have been under the age of 40 at the time of the work submitted for consideration. Two recipients were selected by the award committee for the 14th "Prize in Classical Japanese Literary Scholarship," based upon the committee's consideration of their work (published books) from the period of January to December, 2020.

Graduate Education

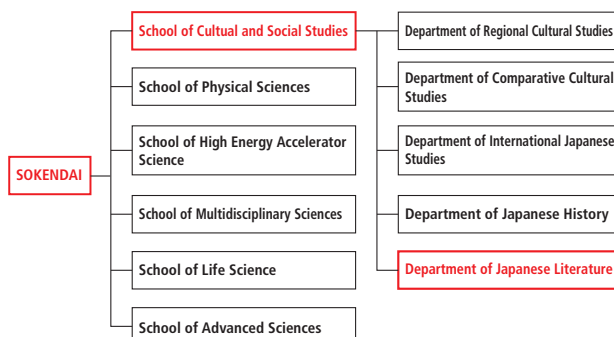
Department of Japanese Literature within the School of Cultural and Social Studies at the Graduate University for Advanced Studies, SOKENDAI

This major's home institute is the National Institute of Japanese Literature (NIJL), a pioneering organization of inter-university collaboration dedicated to the accumulation and study on a massive scale of academic information derived from the examination of original materials. Students in this major, taking advantage of the cultural resources housed at NIJL, receive an education centered on the development of deep specialized expertise in Japanese literature and related fields, in the course of which they acquire the skills necessary to survey relevant documentary materials and analyze them comprehensively.

In addition to a systematic curriculum of classes centered on Japanese literature yet cognizant of related fields, the major provides a system of research supervision based on the expert guidance of numerous teaching staff to foster researchers equipped with high-level specialized expertise and develop human talent capable of contributing to society through their research activities.

SOKENDAI is planning to transition its education system from a system of twenty departments in six schools to a system of 20-program under the Graduate Institute for Advanced Studies. Please visit the following website for the latest information.

● Website for the Graduate Institute for Advanced Studies (tentative) <https://next20.soken.ac.jp/en/home>



● Graduate Program Students (as of April 2022)

| Quota | 1st year | 2nd year | 3rd year | Total |
|-------|----------|----------|----------|-------|
| 3 | 1 | 1 | 4 | 6 |

● Degree Recipients of Past 5 Years

| FY2017 | FY2018 | FY2019 | FY2020 | FY2021 |
|--------|--------|--------|--------|--------|
| 1 | 2 | 0 | 2 | 3 |

*includes the number of those who were Ph. D. by way of Dissertation

● Careers of Degree Recipients

Aoyama Gakuin University Human Innovation Research Center, Kanazawa University, Keio University, Korea University, National Institute of Japanese Literature, Sichuan International Studies University, Shohoku College, Tsuru University, Tokyo Kasei University Junior and Senior High School, Japan Society for the Promotion of Science, Hyogo University of Teacher Education, Morioka University, Waseda University, Soiku Co., Ltd., and others.

Advantages of the Major in Japanese Literary Research

● Guidance by Multiple Supervisors

Students are supported by about 20 expert supervisors representing experience in a wide variety of educational and research fields. To provide a system of supervision responsive to the needs of individual student research projects, one main supervisor and two supporting supervisors are chosen for each student to supply finely customized guidance that draws on multiple perspectives.

● An Environment Conducive to Education and Research

In conducting their research, students will have access to the massive collection of materials housed at NIJL. Also available for use are a full range of facilities open to students majoring in the specialty, including a dedicated room for graduate students, lecture rooms, and a lounge.

● Financial Support

A comprehensive range of financial support is available, including support for travel expenses incurred in research activities such as on-site archival research domestically and overseas, as well as in attendance or presentation at scholarly conferences. Support is also provided through the active hiring of students as research assistants.

Furthermore, photocopying of materials within NIJL is free (up to a certain limit). The institute can also purchase books to make available in the library upon request.



Reference Data

Staff, Budget, and Facilities (FY 2022)

| Staff | (Unit: persons) | Budget | (Unit: 1,000 Yen) | Facilities | (Unit: m ²) |
|---|-----------------|-------------------------------|-------------------|----------------------|-------------------------|
| Director General | 1 | Income | 1,293,501 | Total floor area | 13,002 |
| Professor | 9 | Administrative cost subsidies | 1,289,522 | This includes : | |
| Associate Professor | 13 | Non-subsidized income | 3,979 | Reading room | 1,584 |
| Assistant Professor | 2 | Expenses | 1,293,501 | Stack room / storage | 2,416 |
| Specially-appointed Associate Professor | 2 | Education and research cost | 720,370 | Exhibition room | 355 |
| Specially-appointed Assistant Professor | 3 | Administrative overhead | 573,131 | | |
| Administrative Staff | 46 | | | | |
| Total | 76 | | | | |

Grants-in-Aid for Scientific Research < KAKENHI > (FY 2022)

| Research Categories | Review Classification | Principal Investigator | Research Project Title | Research period |
|---|-----------------------|------------------------|---|-----------------|
| Grant-in-Aid for Scientific Research (A) | General | KATO Kiyofumi | Development of new foundation for the sustainable society and regional regeneration by Archives | 2019–2022 |
| Grant-in-Aid for Scientific Research (A) | General | IRIGUCHI Atsushi | Integrated research on text formation for a data-driven approach to Japanese literature and related fields | 2022–2026 |
| Grant-in-Aid for Scientific Research (B) | General | WATANABE Koichi | History of urban disasters in early modern period: The interaction between nature and humans | 2018–2022 |
| Grant-in-Aid for Scientific Research (B) | General | UNNO Keisuke | A Study on the Circulation of Religious Knowledge and the Formation of Archive on Buddhism in Medieval Japan through the Survey of the Mani-in of Kongo-ji Temple | 2019–2022 |
| Grant-in-Aid for Scientific Research (B) | General | SAITO Maori | Comprehensive research on the reception and development of Ming period publishing culture in Japanese medieval and early modern painting topics | 2020–2022 |
| Grant-in-Aid for Scientific Research (B) | General | FUJIZANE Kumiko | Promoting academic research and open science related to wood-block prints during the period of Meiji Restoration | 2020–2023 |
| Grant-in-Aid for Scientific Research (C) | General | KANSAKU Ken'ichi | Fundamental study on picture books and illustrated texts during the Edo period with a focus on Poetic Collections | 2019–2022 |
| Grant-in-Aid for Scientific Research (C) | General | TAKEI Kyozo | Research into Hirosaki Hanchō Nikki, a record of plays that were performed: Elucidation of "zashiki (sitting room)" plays during the Kyōhō period | 2019–2022 |
| Grant-in-Aid for Scientific Research (C) | General | YAMASHITA Noriko | Study of Middle-Early Modern Arts and Sciences in Tsuruya Nanboku Kabuki | 2020–2024 |
| Grant-in-Aid for Scientific Research (C) | General | KIGOSHI Shunsuke | The restructuring and reception of 19th-century style "knowledge" as observed in local gazetteers and in stories of the fantastic | 2020–2023 |
| Grant-in-Aid for Scientific Research (C) | General | KOBAYASHI Kenji | A survey of and research on pictorial materials based on Noh and kyogen of the early to mid-Edo period | 2020–2023 |
| Grant-in-Aid for Scientific Research (C) | General | DAVIN Didier | Works related to the early Daitō Kokushi School | 2021–2023 |
| Grant-in-Aid for Challenging Research (Pioneering) | | AOTA Sumi | Expansion of information for high-order use of the database on ownership stamps and development of a seal script character learning interface | 2018–2022 |
| Grant-in-Aid for Challenging Research (Pioneering) | | WATANABE Koichi | Examining nationwide surveys of regional archives during the social transition periods and developing new methods | 2020–2023 |
| Grant-in-Aid for Challenging Research (Exploratory) | | AIDA Mitsuru | Basic research for sharing of "Kojiruien" and analysis of modern classical science | 2019–2022 |
| Grant-in-Aid for Early-Career Scientists | | YAMAMOTO Yoshitaka | The Reception of High Tang Poetry in Sinitic Poems by Kinoshita Jun'an | 2018–2022 |
| Grant-in-Aid for Early-Career Scientists | | KIKUCHI Nobuhiko | Digital Historical Research on Publishing and Reading Nationalisms in Spain | 2019–2022 |
| Grant-in-Aid for Early-Career Scientists | | TADA Kurahito | Historical overview of the reception and expression of Edo culture in modern Japanese literature | 2019–2022 |
| Grant-in-Aid for Early-Career Scientists | | IGURO Kahoko | Border transgression between species and gender as observed in "Tamamizu Monogatari" | 2019–2022 |
| Grant-in-Aid for Early-Career Scientists | | KUME Shiori | Fundamental research on the narrative of Hoganmono: Elucidation of the influence of kowakamai, sekkyō and kojōruri | 2019–2022 |
| Grant-in-Aid for Early-Career Scientists | | KNOTT Jeffrey | Basic Research on the History of Classical Studies in the Warring-States Period: The Genji Studies of Renga Masters in Particular | 2021–2025 |
| Grant-in-Aid for Early-Career Scientists | | YAMAMOTO Yoshitaka | Sinitic Prose Composition by Ito Togai | 2022–2026 |
| Grant-in-Aid for Research Activity Start-up | | TAKAGI Madoka | Studies on prostitution in the medieval/early modern transition period based on sexually transmitted infection information in medical texts and diaries | 2020–2022 |
| Grant-in-Aid for JSPS Fellows | | UEDA Tetsuji | Research into Ainu historical figures as preparative foundation for the construction of an Ainu history: Focusing on the first period of Shōgunal dominion in Ezo | 2020–2022 |
| Fund for the Promotion of Joint International Research (Fostering Joint International Research (B)) | | KANSAKU Ken'ichi | Research on Pre-Modern Japanese texts existing in the U.S. (the Richard Lane Collection) and Study of the Utilization for Education | 2018–2022 |
| Fund for the Promotion of Joint International Research (Fostering Joint International Research (B)) | | KATO Kiyofumi | The Russo-Japanese joint research to construct the archival system of Soviet-Japanese War | 2018–2022 |
| Grant-in-Aid for Publication of Scientific Research Results (Scientific Literature) | | OKA Masahiko | A timeline of early Edo period publishing (1658–1688) | 2020–2022 |
| Grant-in-Aid for Publication of Scientific Research Results (Scientific Literature) | | KUME Shiori | Research on medieval narrative literature: Belief, images, and regional folklore | 2022 |
| Grant-in-Aid for Publication of Scientific Research Results (Scientific Literature) | | YAMAMOTO Kazuaki | Discourse on early modern novels in the late Edo period | 2022 |
| Grant-in-Aid for Publication of Scientific Research Results (Databases) | | UNNO Keisuke | Union Catalogue of Early Japanese Books | 2020–2024 |
| Grant-in-Aid for Publication of Scientific Research Results (Databases) | | YAMAMOTO Kazuaki | Database of Pre-Modern Japanese Works | 2021–2022 |
| Grant-in-Aid for Publication of Scientific Research Results (Databases) | | YAMAMOTO Kazuaki | Database of Pre-Modern Japanese Works | 2022 |
| Grant-in-Aid for Publication of Scientific Research Results (Databases) | | NISHIMURA Shintaro | Database of Historical Archives Deposited at NIJL | 2022 |

(as of April 1, 2022)

A List of Major Publications

Publications Introducing NIJL

- Overview of the National Institute of Japanese Literature
- NIJL News (issued twice a year) (online only)
- Fumi



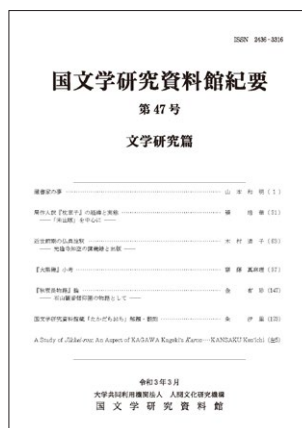
NIJL News



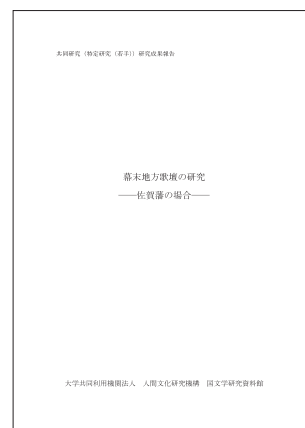
Fumi

Publications Presenting Research Results

- Bulletin of the National Institute of Japanese Literature (online only)
 - Studies in Japanese Literature Series
 - Archive Studies Series
- Reports on the Results of Collaborative Research Projects



Bulletin of the National Institute of Japanese Literature: Studies in Japanese Literature Series



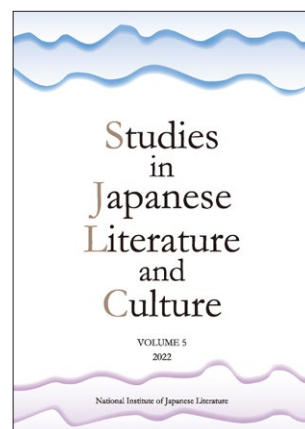
Reports on the Results of Collaborative Research Projects
Research into a Regional Poet Society in the Last Days of the Shogunate Regime (A Case of the Saga Clan)

Project-related Publications

- Report on Surveys and Research (online only)
- Catalogue of Historical Documents (online only)
- Exhibition Catalogs
- Studies in Japanese Literature and Culture (online only)



Illustrated Exhibition Catalogue:
"Special 50th Anniversary
Exhibition: My Favorite Text at
National Institute of Japanese
Literature"



Studies in Japanese
Literature and Culture



Inter-University Research Institute Corporation
National Institutes for the Humanities (NIHU)
<https://www.nihu.jp/en>

National Institutes for the Humanities

National Institutes for the Humanities

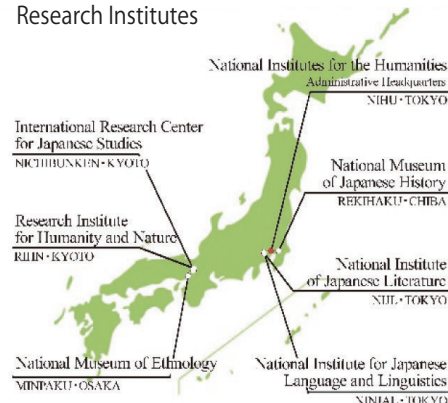
The National Institutes for the Humanities (NIHU) consists of six inter-university research institutes that specialize in humanities research. Each institute is deeply involved in and serves as a domestic and international research hub for foundational research in their respective fields. The six institutes interact in a complementary fashion and carry out research that transcends the frameworks of traditional disciplines. Also, they cooperate with other research institutes domestically and internationally in their endeavors to elucidate and solve modern issues. They aspire to realize human life that is rich in the true sense by promoting research on human cultures and creating new values.

Contribution to the University

Graduate Education

NIHU's four humanities research institutes offer courses at the Graduate University for Advanced Studies (SOKENDAI), and the five doctoral programs are designed to take advantage of institutional resources and provide an array of specialized training for scholars. All the six research institutes of NIHU accept graduate students from other universities, thereby contributing to the training of future leaders in their fields.

Locations of NIHU and Its Six Humanities Research Institutes



Courses offered at SOKENDAI

- Department of Regional Studies (Minpaku)
- Department of Comparative Studies (Minpaku)
- Department of Japanese Studies (Nichibunken)
- Department of Japanese History (Rekihaku)
- Department of Japanese Literature (NIJL)

Social Outreach, Providing Public Access to Research Results



39th NIHU Symposium



Joint symposium with the Japan Forum for the Cultivation of Insight from the Humanities



Joint Symposium with the Ajinomoto Foundation for Dietary Culture

Inter-University Research Institute Corporations

NIHU is one of Japan's four inter-university research institute corporations.

Inter-University Research and Education Alliance

Established on March 1, 2022, the Inter-University Research and Education Alliance (IU-REAL) has five members: the four inter-university research institute corporations (the National Institutes for the Humanities, the National Institutes of Natural Sciences, the High Energy Accelerator Research Organization, the Research Organization of Information and Systems) and the Graduate University for Advanced Studies (SOKENDAI).

IU-REAL aims at leading the further development of academic research in Japan by promoting collaborative projects for the five members to fully perform their respective functions through integrated research and educational activities.

Inter-University Research and Education Alliance (IU-REAL)



What is IU-Real?

On March 1, 2022 IU-Real was founded with its membership consisting of the four inter-university research institute corporations (NIHU, NINS, KEK, and ROIS) and SOKENDAI.
 URL: <https://iu-real.jp>

Center for Innovative Research (CIR)

The Center for Innovative Research (CIR), set up under NIHU, promotes both the Transdisciplinary Projects and the Co-creation Research Initiatives. As a core of fundamental and interdisciplinary research, CIR seeks to spur development in three research orientations—a creative collaboration with society, digitalization in response to the new era, and advancement of international collaboration.

NIHU Transdisciplinary Projects

In boosting fundamental and interdisciplinary research on human cultures that forms the foundations of NIHU, we carry out eleven research projects of three types, thereby expanding networks of scholarship and creating new fields of research. This, we hope, will strengthen the functions of the six NIHU-member research institutes in fulfilling their missions as inter-university research institutes.

Institute-based Projects

Given the results of the evaluation of education and research activities of each inter-university research institute, projects of this type aim to facilitate deeper studies in research fields according to the institutes' respective missions.

Multidisciplinary Collaborative Projects

Through interdisciplinary and transdisciplinary projects, the NIHU-member institutes promote co-creative research through organic linkages with each other.

Network-based Projects

Projects of this type aim to create attractive research hubs through networks with universities and other research and education institutions to tackle issues in various fields of research.

NIHU Co-creation Research Initiatives

Knowledge Co-creation Projects: These projects are to lead the way toward fulfillment of NIHU's missions and collaborative research that will strengthen the functions of its institutes through co-creation efforts of a wide variety of organizations and people in and out of NIHU. Efforts are focused in three research orientations—a creative collaboration with society, digitalization in response to the new era, and advancement of international collaboration.

Co-creation Outreach Initiatives: This project accelerating the three orientations above will promote research advancement and creativity at NIHU's research institutes and other research institutes including universities.

-NIHU Knowledge Co-creation Projects: These projects have the following activities to promote societal co-creation in cooperation with NIHU's research institutes and other research institutes including universities: 1) visualizing cutting-edge research works in the humanities through museums and exhibits; 2) leading research promotion models that boost research through co-creation with academia and society; 3) organizing and advertising the NIHU symposiums on the humanities and other activities.

-NIHU "Digital Humanities" (DH) Projects: These projects are a new initiative for the humanities that will be opened up by accelerating digitalization and making a variety of research databases widely accessible.

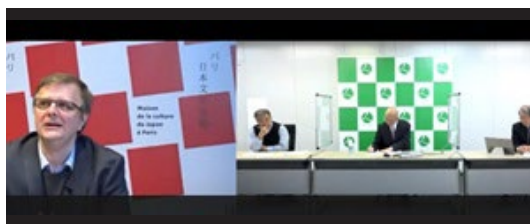
-NIHU Global Partnership: International interactive networks with overseas universities, research institutes, and outstanding scholars (such as recipients of the NIHU International Prize in Japanese Studies) will be newly built to invigorate research exchange including training for young scholars in humanities.



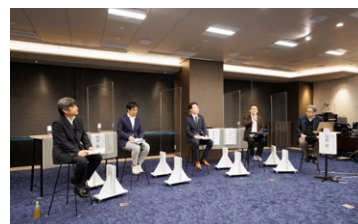
The Archives of Paris Foreign Missions Society



NIHU Program for Young Researcher Overseas Visits



Collaborative online lectures jointly organized by the Japan Cultural Institute in Paris and NIHU



Resource Sharing Promotion Project Committee, National Institutes for the Humanities



Author
Tachibana Minkou

Directions

By Tama Intercity Monorail:

Get off at JR Tachikawa Station, make switch to Tama Monorail Tachikawa-Kita Station, get off at Takamatsu Station, and walk 10 minutes.

By Tachikawa bus:

From JR Tachikawa Station's north entrance, board bus at boarding area ②, get off at "Tachikawa Gakujutsu Plaza," and walk 1 minutes.

From JR Tachikawa Station's north entrance, board bus at boarding area ①, get off at "Tachikawa Shiyakusho," and walk 3 minutes.

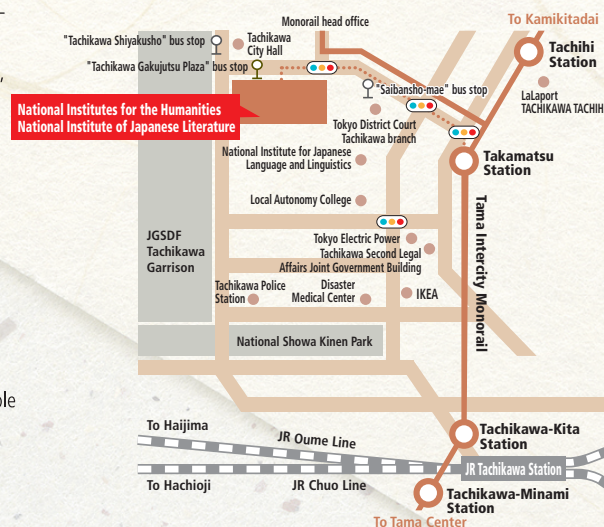
From JR Tachikawa Station's north entrance, board bus at boarding area ②, get off at "Saibansho-mae," and walk 5 minutes.

On foot:

From JR Tachikawa Station, walk about 25 minutes.

By car:

From Chuo Expressway's "Kunitachi Fuchu IC," drive about 15 minutes. *Free parking available



大学共同利用機関法人 人間文化研究機構

国文学研究資料館

10-3 Midori-cho, Tachikawa, Tokyo

TEL: 050-5533-2900

FAX: 042-526-8604

<https://www.nijl.ac.jp/>

National Institute of Japanese Literature (NIJL) National Institutes for the Humanities

Address: 10-3 Midori-cho, Tachikawa city, TOKYO 190-0014, Japan

TEL: +81-50-5533-2900

FAX: +81-42-526-8604